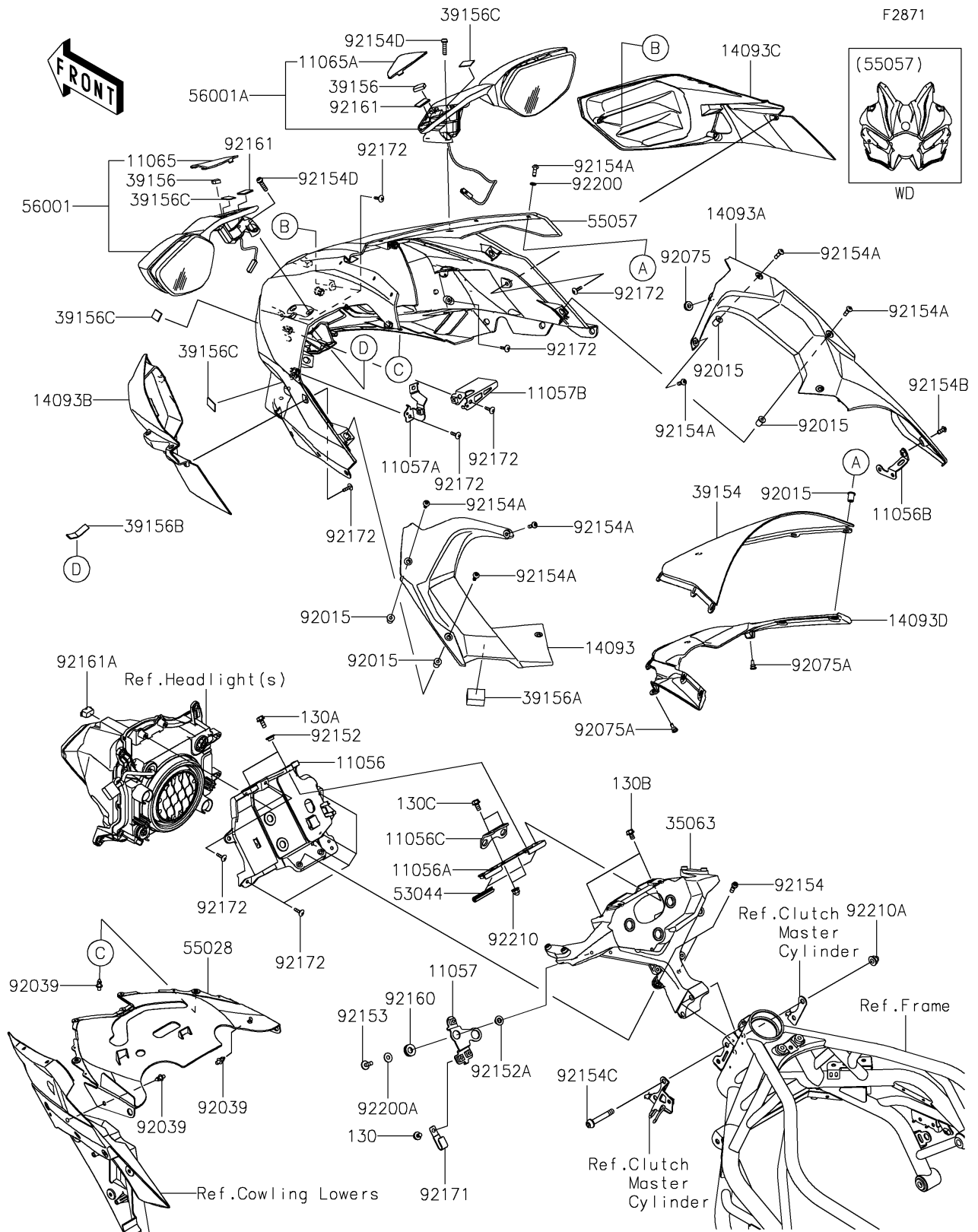


2026 Ninja H2 ABS

PARTS DIAGRAM

Cowling(JTFNN/JTFNL)



2026 Ninja H2 ABS

PARTS LIST

Cowling(JTFNN/JTFNL)

| ITEM NAME | PART NUMBER | QUANTITY |
|---|----------------|----------|
| BRACKET,HEAD LAMP (Ref # 11056) | 11056-4497 | 1 |
| BRACKET,METER STAY (Ref # 11056A) | 11056-7076 | 1 |
| BRACKET,INNER COVER (Ref # 11056B) | 11056-7098 | 1 |
| BRACKET,V.D. SENSOR (Ref # 11056C) | 11056-7534 | 1 |
| BRACKET,GYRO SENSOR (Ref # 11057) | 11057-0447 | 1 |
| BRACKET (Ref # 11057A) | 11057-0765 | 1 |
| BRACKET,HEAD LAMP HARNESS (Ref # 11057B) | 11057-0777 | 1 |
| CAP,UPP,LH (Ref # 11065) | 11065-0922 | 1 |
| CAP,UPP,RH (Ref # 11065A) | 11065-0923 | 1 |
| COVER,INNER,LH (Ref # 14093) | 14093-0182 | 1 |
| COVER,INNER,RH (Ref # 14093A) | 14093-0183 | 1 |
| COVER,DUCT,LH (Ref # 14093B) | 14093-0185 | 1 |
| COVER,DUCT,RH (Ref # 14093C) | 14093-0186 | 1 |
| COVER,METER VISOR (Ref # 14093D) | 14093-0783 | 1 |
| STAY,UPP COWL.,M.F.S.BLACK (Ref # 35063) | 35063-1459-46R | 1 |
| WINDSHIELD (Ref # 39154) | 39154-0341 | 1 |
| PAD,12X10X8 (Ref # 39156) | 39156-1809 | 2 |
| PAD,20X30X24 (Ref # 39156A) | 39156-1900 | 1 |
| PAD,10X50X2 (Ref # 39156B) | 39156-1924 | 1 |
| PAD,15X25X1 (Ref # 39156C) | 39156-2119 | 6 |
| TRIM (Ref # 53044) | 53044-0580 | 2 |
| COWLING,UPP,LWR (Ref # 55028) | 55028-0539 | 1 |
| COWLING,UPP,M.C.S.BLACK (Ref # 55057) | 55057-5315-53X | 1 |
| MIRROR-ASSY,LH,M.F.S.BLACK (Ref # 56001) | 56001-0330-739 | 1 |
| MIRROR-ASSY,RH,M.F.S.BLACK (Ref # 56001A) | 56001-0331-739 | 1 |
| NUT,WELL,5MM (Ref # 92015) | 92015-1757 | 10 |
| RIVET (Ref # 92039) | 92039-0060 | 4 |
| DAMPER,6X16X7 (Ref # 92075) | 92075-1011 | 1 |
| DAMPER,6X10X15 (Ref # 92075A) | 92075-1808 | 2 |

2026 Ninja H2 ABS

PARTS LIST

Cowling(JTFNN/JTFNL)

| ITEM NAME | PART NUMBER | QUANTITY |
|----------------------------------|-------------|----------|
| COLLAR,6.5X10X5.6 (Ref # 92152) | 92152-0445 | 2 |
| COLLAR,6.5X16X7.3 (Ref # 92152A) | 92152-2336 | 2 |
| BOLT,6X18 (Ref # 92153) | 92153-0816 | 2 |
| BOLT,SOCKET,6X18 (Ref # 92154) | 92154-1455 | 2 |
| BOLT,SOCKET,5X16 (Ref # 92154A) | 92154-1560 | 12 |
| BOLT,SOCKET,5X12 (Ref # 92154B) | 92154-1561 | 1 |
| BOLT,SOCKET,8X52 (Ref # 92154C) | 92154-1710 | 2 |
| BOLT,SOCKET,6X22 (Ref # 92154D) | 92154-1724 | 4 |
| DAMPER (Ref # 92160) | 92160-1278 | 2 |
| DAMPER,16X23X2 (Ref # 92161) | 92161-1696 | 2 |
| DAMPER,HEAD LAMP (Ref # 92161A) | 92161-1734 | 1 |
| CLAMP (Ref # 92171) | 92171-0305 | 1 |
| SCREW,TAPPING,5X16 (Ref # 92172) | 92172-0238 | 14 |
| WASHER,5.2X10X1.0 (Ref # 92200) | 92200-1820 | 6 |
| WASHER,6.5X16X1.0 (Ref # 92200A) | 92200-3712 | 2 |
| NUT,CAP,6MM (Ref # 92210) | 92210-0003 | 2 |
| NUT,CAP,8MM (Ref # 92210A) | 92210-1132 | 2 |
| BOLT-FLANGED,6X8 (Ref # 130) | 130BA0608 | 1 |
| BOLT-FLANGED,6X14 (Ref # 130A) | 130BA0614 | 2 |
| BOLT-FLANGED,6X10 (Ref # 130B) | 130BB0610 | 2 |
| BOLT-FLANGED,6X12 (Ref # 130C) | 130R0612 | 2 |