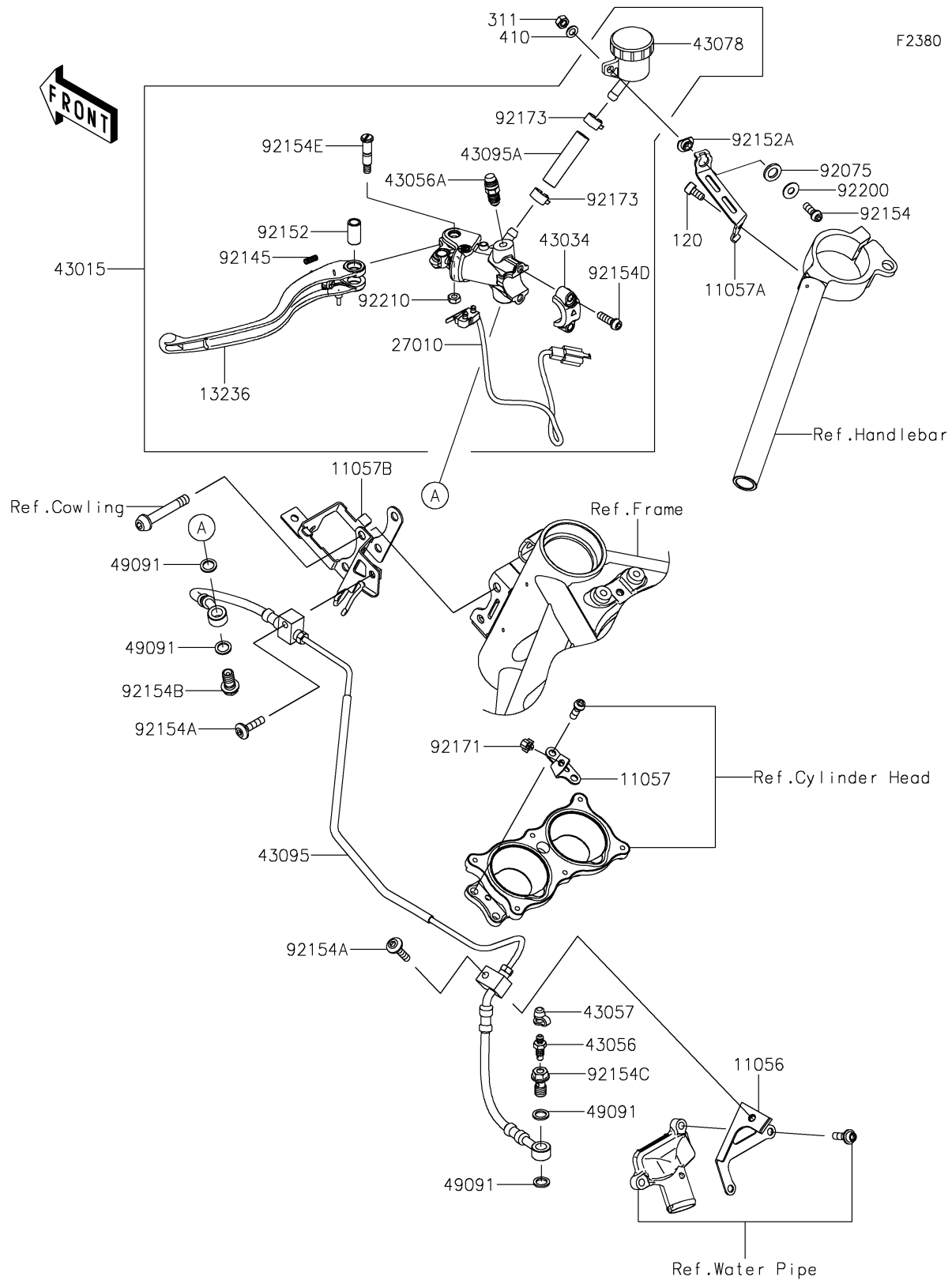


2026 NINJA H2[®] CARBON ABS

PARTS DIAGRAM

Clutch Master Cylinder



2026 NINJA H2[®] CARBON ABS

PARTS LIST

Clutch Master Cylinder

| ITEM NAME | PART NUMBER | QUANTITY |
|--|-------------|----------|
| BRACKET,CYLINDER (Ref # 11056) | 11056-7079 | 1 |
| BRACKET,THROBO. HOLDER (Ref # 11057) | 11057-0041 | 1 |
| BRACKET,RESERVOIR (Ref # 11057A) | 11057-0053 | 1 |
| BRACKET,FRM HEAD (Ref # 11057B) | 11057-0567 | 1 |
| LEVER-COMP,CLUTCH (Ref # 13236) | 13236-0771 | 1 |
| SWITCH,STOP (Ref # 27010) | 27010-0921 | 1 |
| CYLINDER-ASSY-MASTER,CLUTCH (Ref # 43015) | 43015-0749 | 1 |
| HOLDER-BRAKE (Ref # 43034) | 43034-0121 | 1 |
| BREATHER-BRAKE (Ref # 43056) | 43056-0007 | 1 |
| BREATHER-BRAKE (Ref # 43056A) | 43056-0019 | 1 |
| CAP-BREATHER (Ref # 43057) | 43057-003 | 1 |
| RESERVOIR (Ref # 43078) | 43078-0586 | 1 |
| HOSE-BRAKE,CLUTCH (Ref # 43095) | 43095-0893 | 1 |
| HOSE-BRAKE (Ref # 43095A) | 43095-0909 | 1 |
| WASHER-SEAL,10.1X14.5X1.5 (Ref # 49091) | 49091-0001 | 4 |
| DAMPER (Ref # 92075) | 92075-1564 | 1 |
| SPRING (Ref # 92145) | 92145-1683 | 1 |
| COLLAR,LEVER (Ref # 92152) | 92152-2151 | 1 |
| COLLAR,6.5X10X5.3 (Ref # 92152A) | 92152-2225 | 1 |
| BOLT,SOCKET,6X18 (Ref # 92154) | 92154-1455 | 1 |
| BOLT,SOCKET,6X25 (Ref # 92154A) | 92154-1532 | 2 |
| BOLT,BANJO,10X19 (Ref # 92154B) | 92154-1554 | 1 |
| BOLT,BANJO,10X19,C. RELEASE (Ref # 92154C) | 92154-1622 | 1 |
| BOLT,SOCKET,6X20 (Ref # 92154D) | 92154-1644 | 2 |
| BOLT,LEVER (Ref # 92154E) | 92154-1809 | 1 |
| CLAMP (Ref # 92171) | 92171-0939 | 1 |
| CLAMP,HOSE (Ref # 92173) | 92173-1498 | 2 |
| WASHER,6.5X16X1.0 (Ref # 92200) | 92200-3712 | 1 |
| NUT,U (Ref # 92210) | 92210-1424 | 1 |

2026 NINJA H2[®] CARBON ABS

PARTS LIST

Clutch Master Cylinder

| ITEM NAME | PART NUMBER | QUANTITY |
|--------------------------------|-------------|----------|
| BOLT-SOCKET,6X12 (Ref # 120) | 120CB0612 | 1 |
| NUT-HEX (Ref # 311) | 311AC0600 | 1 |
| WASHER-PLAIN-SMALL (Ref # 410) | 410AA0600 | 1 |