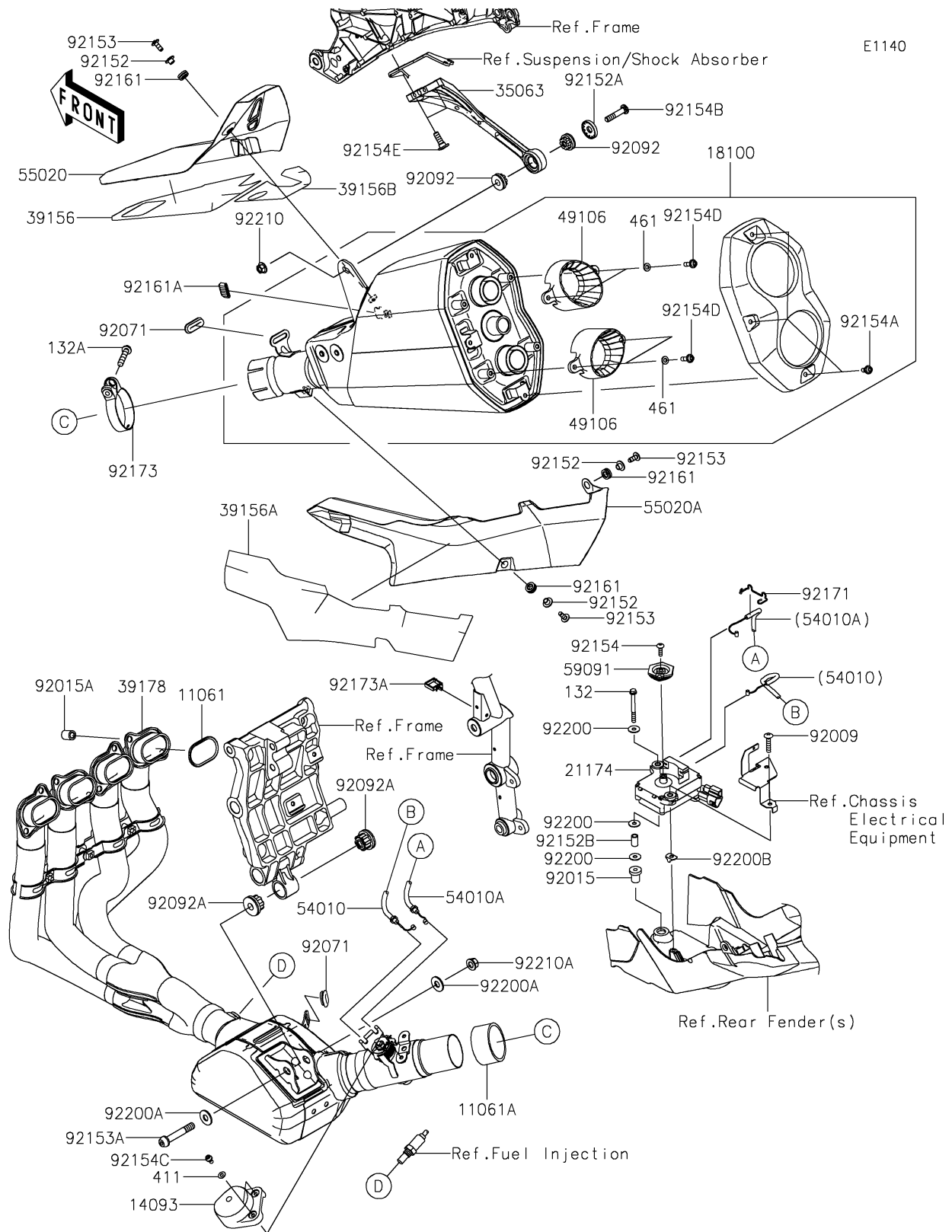


2026 NINJA H2[®] CARBON ABS

PARTS DIAGRAM

Muffler(s)



2026 NINJA H2[®] CARBON ABS

PARTS LIST

Muffler(s)

| ITEM NAME | PART NUMBER | QUANTITY |
|--------------------------------------|-------------|----------|
| GASKET,EXHAUST PIPE (Ref # 11061) | 11061-0951 | 4 |
| GASKET,MUFFLER JOINT (Ref # 11061A) | 11061-0980 | 1 |
| COVER (Ref # 14093) | 14093-0161 | 1 |
| BODY-ASSY-MUFFLER (Ref # 18100) | 18100-0581 | 1 |
| MOTOR-ELECTRIC (Ref # 21174) | 21174-0009 | 1 |
| STAY,MUFFLER BODY (Ref # 35063) | 35063-1381 | 1 |
| PAD,UPP,FR (Ref # 39156) | 39156-1837 | 1 |
| PAD,LWR (Ref # 39156A) | 39156-1838 | 1 |
| PAD,UPP,RR (Ref # 39156B) | 39156-1892 | 1 |
| MANIFOLD-COMP-EXHAUST (Ref # 39178) | 39178-0436 | 1 |
| COVER-MUFFLER,END PIPE (Ref # 49106) | 49106-0787 | 2 |
| CABLE,CLOSE (Ref # 54010) | 54010-0603 | 1 |
| CABLE,OPEN (Ref # 54010A) | 54010-0604 | 1 |
| GUARD,UPP (Ref # 55020) | 55020-1949 | 1 |
| GUARD,LWR (Ref # 55020A) | 55020-1950 | 1 |
| PULLEY (Ref # 59091) | 59091-0007 | 1 |
| SCREW,TAPPING,6X30 (Ref # 92009) | 92009-1481 | 1 |
| NUT,RUBBER,6MM (Ref # 92015) | 92015-1692 | 1 |
| NUT (Ref # 92015A) | 92015-1923 | 8 |
| GROMMET (Ref # 92071) | 92071-0752 | 2 |
| BUSHING-RUBBER (Ref # 92092) | 92092-0018 | 2 |
| BUSHING-RUBBER (Ref # 92092A) | 92092-1081 | 2 |
| COLLAR,6.3X8.3X16 (Ref # 92152) | 92152-0286 | 3 |
| COLLAR (Ref # 92152A) | 92152-1943 | 1 |
| COLLAR,6.8X10X16.9 (Ref # 92152B) | 92152-1959 | 1 |
| BOLT,SOCKET,6X16 (Ref # 92153) | 92153-0817 | 3 |
| BOLT,SOCKET,10X60 (Ref # 92153A) | 92153-1837 | 1 |
| BOLT,TORX,5X18 (Ref # 92154) | 92154-0217 | 1 |
| BOLT,SOCKET,6X14 (Ref # 92154A) | 92154-1460 | 3 |

2026 NINJA H2[®] CARBON ABS

PARTS LIST

Muffler(s)

| ITEM NAME | PART NUMBER | QUANTITY |
|--------------------------------------|-------------|----------|
| BOLT,SOCKET (Ref # 92154B) | 92154-1545 | 1 |
| BOLT,SOCKET,5X10 (Ref # 92154C) | 92154-1558 | 2 |
| BOLT,SOCKET,6X20 (Ref # 92154D) | 92154-1667 | 4 |
| BOLT,SOCKET,8X23 (Ref # 92154E) | 92154-1901 | 2 |
| DAMPER (Ref # 92161) | 92161-0306 | 3 |
| DAMPER (Ref # 92161A) | 92161-1733 | 1 |
| CLAMP (Ref # 92171) | 92171-0292 | 1 |
| CLAMP,64.5MM (Ref # 92173) | 92173-0284 | 1 |
| CLAMP (Ref # 92173A) | 92173-1513 | 1 |
| WASHER (Ref # 92200) | 92200-0078 | 3 |
| WASHER,10.5X25X2.0 (Ref # 92200A) | 92200-1377 | 2 |
| WASHER (Ref # 92200B) | 92200-1746 | 1 |
| NUT,8MM (Ref # 92210) | 92210-0121 | 1 |
| NUT,LOCK,FLANGED,10MM (Ref # 92210A) | 92210-1139 | 1 |
| BOLT-FLANGED-SMALL,6X55 (Ref # 132) | 132BA0655 | 1 |
| BOLT-FLANGED-SMALL,8X40 (Ref # 132A) | 132BC0840 | 1 |
| WASHER-PLAIN,5MM (Ref # 411) | 411S0500 | 2 |
| WASHER-SPRING,6MM (Ref # 461) | 461S0600 | 4 |