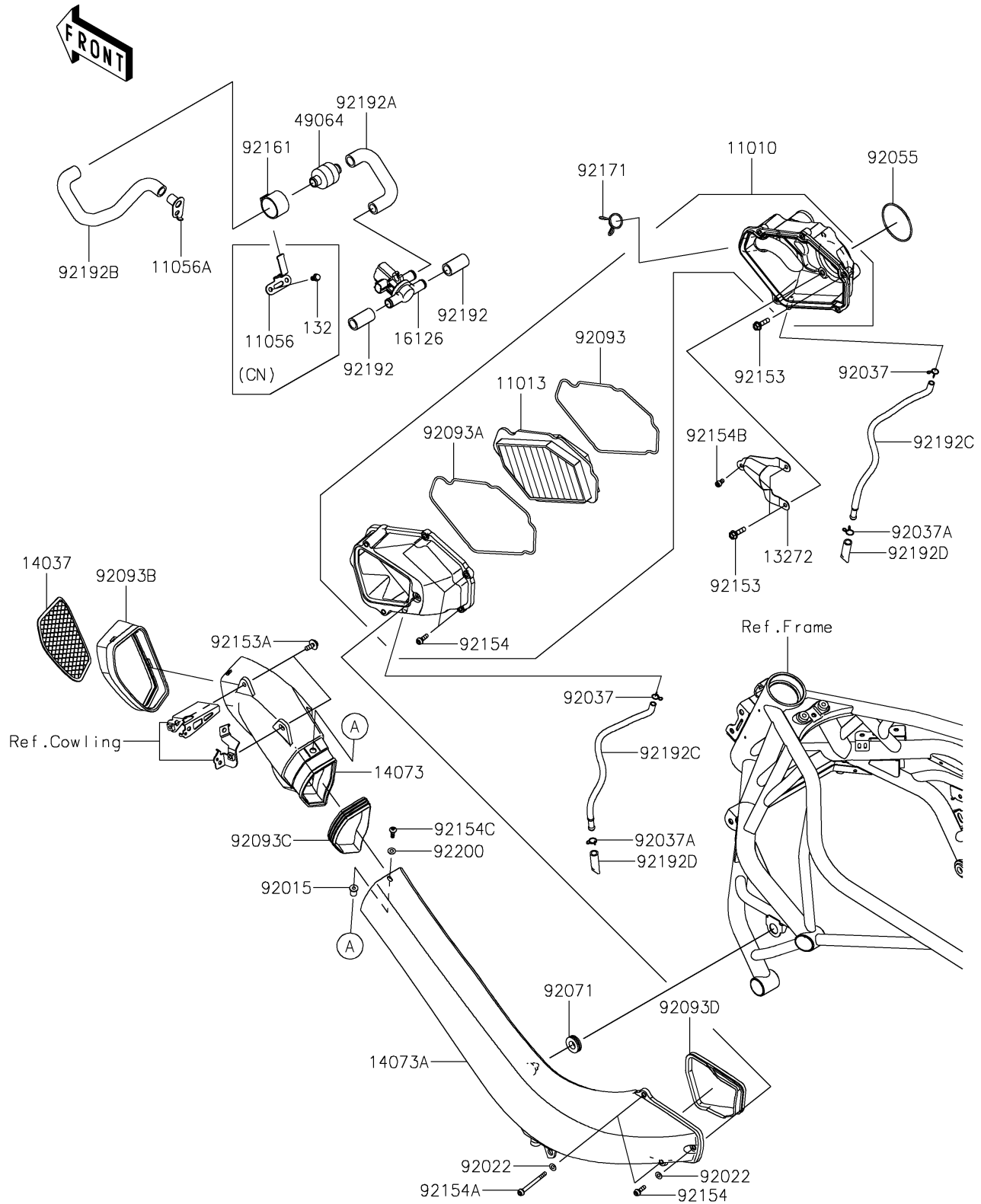


2026 NINJA H2[®] CARBON ABS

PARTS DIAGRAM

Air Cleaner

E1130



2026 NINJA H2[®] CARBON ABS

PARTS LIST

Air Cleaner

| ITEM NAME | PART NUMBER | QUANTITY |
|--|----------------|----------|
| FILTER-ASSY-AIR (Ref # 11010) | 11010-0898 | 1 |
| ELEMENT-AIR FILTER (Ref # 11013) | 11013-0776 | 1 |
| BRACKET,FILTER (Ref # 11056) | 11056-4451 | 1 |
| BRACKET,2ND AIR TUBE (Ref # 11056A) | 11056-4479 | 1 |
| PLATE,BLOW OFF (Ref # 13272) | 13272-1850 | 1 |
| SCREEN (Ref # 14037) | 14037-0772 | 1 |
| DUCT,RAM AIR,FR (Ref # 14073) | 14073-0869 | 1 |
| DUCT,RAM AIR,RR,M.S.BLACK (Ref # 14073A) | 14073-0870-660 | 1 |
| VALVE,AIR SWITCHING (Ref # 16126) | 16126-0745 | 1 |
| FILTER-AIR (Ref # 49064) | 49064-0010 | 1 |
| NUT,WELL,5MM (Ref # 92015) | 92015-1757 | 1 |
| WASHER,5.1X10X1.0 (Ref # 92022) | 92022-1977 | 3 |
| CLAMP (Ref # 92037) | 92037-1712 | 2 |
| CLAMP,TUBE (Ref # 92037A) | 92037-1972 | 2 |
| RING-O,60.5X2 (Ref # 92055) | 92055-0836 | 1 |
| GROMMET (Ref # 92071) | 92071-056 | 1 |
| SEAL,ELEMENT (Ref # 92093) | 92093-0614 | 1 |
| SEAL,CASE (Ref # 92093A) | 92093-0615 | 1 |
| SEAL,FR (Ref # 92093B) | 92093-0618 | 1 |
| SEAL,RR (Ref # 92093C) | 92093-0619 | 1 |
| SEAL (Ref # 92093D) | 92093-0620 | 1 |
| BOLT,FLANGED,6X22 (Ref # 92153) | 92153-1566 | 3 |
| BOLT,UPSET-WP,6X16 (Ref # 92153A) | 92153-1587 | 2 |
| BOLT,SOCKET,5X18 (Ref # 92154) | 92154-1450 | 4 |
| BOLT,SOCKET,5X18 (Ref # 92154A) | 92154-1452 | 2 |
| BOLT,SOCKET,5X10 (Ref # 92154B) | 92154-1642 | 1 |
| BOLT,SOCKET,5X16 (Ref # 92154C) | 92154-1729 | 1 |
| DAMPER,FILTER (Ref # 92161) | 92161-1713 | 1 |
| CLAMP (Ref # 92171) | 92171-0391 | 1 |

2026 NINJA H2[®] CARBON ABS

PARTS LIST

Air Cleaner

| ITEM NAME | PART NUMBER | QUANTITY |
|---|-------------|----------|
| TUBE,12X17.6X38 (Ref # 92192) | 92192-0887 | 2 |
| TUBE,VALVE-FILTER (Ref # 92192A) | 92192-1413 | 1 |
| TUBE,FILTER INLET (Ref # 92192B) | 92192-1414 | 1 |
| TUBE,DRAIN L=285 (Ref # 92192C) | 92192-1461 | 2 |
| TUBE,DRAIN,L=40 (Ref # 92192D) | 92192-1979 | 2 |
| WASHER,NYLON,5.3X11.5X0.5 (Ref # 92200) | 92200-1480 | 1 |
| BOLT-FLANGED-SMALL,6X10 (Ref # 132) | 132BA0610 | 2 |