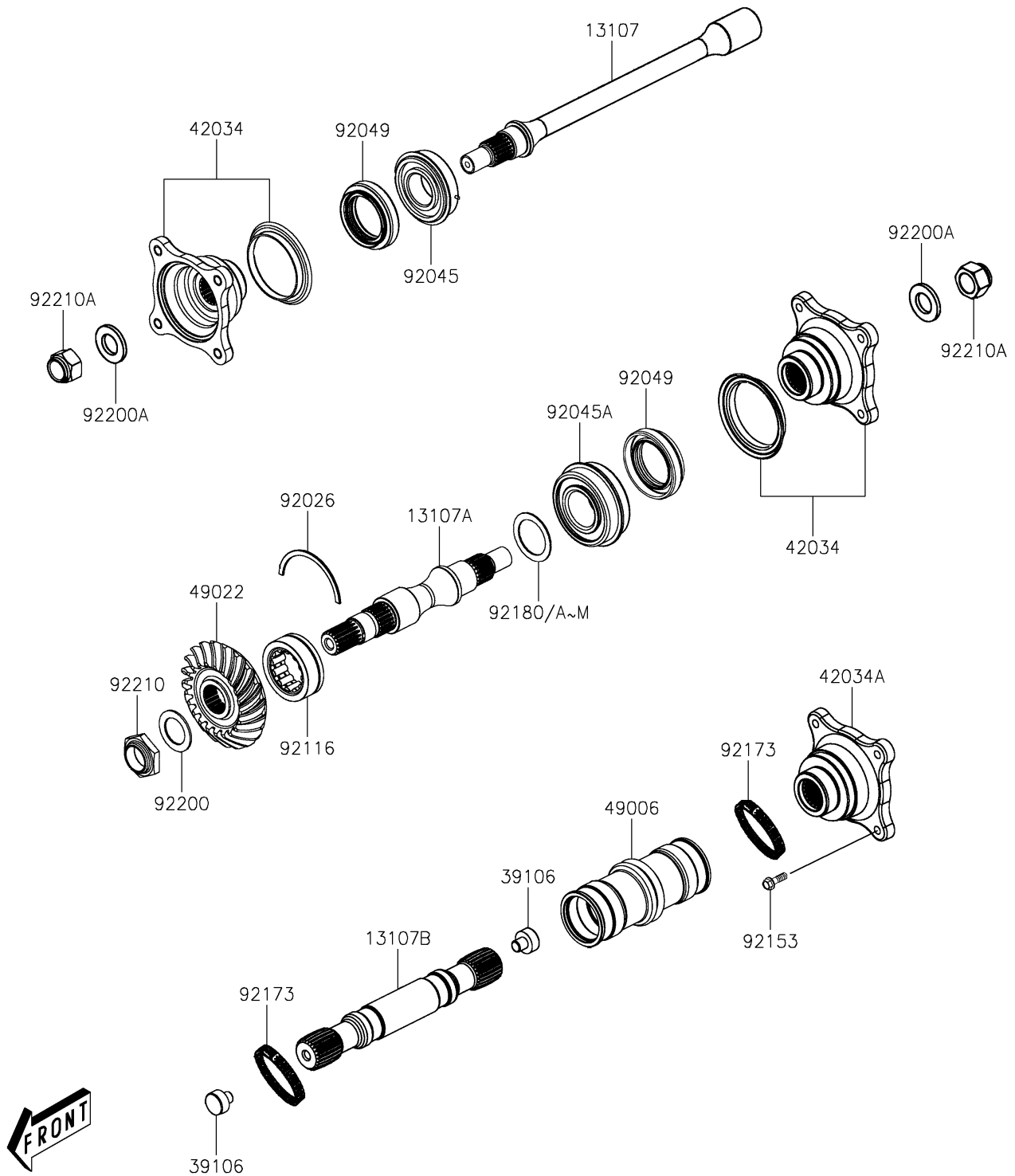


# 2026 Brute Force 450

## PARTS DIAGRAM

### Drive Shaft-Propeller

E3135



# 2026 Brute Force 450

## PARTS LIST

### Drive Shaft-Propeller

ITEM NAME	PART NUMBER	QUANTITY
SHAFT,FR FINAL DRIVEN (Ref # 13107)	13107-Y036	1
SHAFT,RR FINAL DRIVEN (Ref # 13107A)	13107-Y037	1
SHAFT,FR PROPELLER (Ref # 13107B)	13107-Y044	1
RETAINER-BUMPER,DRIVE SHAFT (Ref # 39106)	39106-Y001	2
COUPLING,RR SHAFT (Ref # 42034)	42034-Y004	2
COUPLING (Ref # 42034A)	42034-Y005	1
BOOT,FR PROPELLER SHAFT (Ref # 49006)	49006-Y023	1
GEAR-BEVEL,DRIVEN (Ref # 49022)	49022-Y009	1
SPACER (Ref # 92026)	92026-Y016	1
BEARING-BALL,25X52X15 (Ref # 92045)	92045-Y064	1
BEARING-BALL,25X52X20.6 (Ref # 92045A)	92045-Y067	1
SEAL-OIL,34X52X9 (Ref # 92049)	92049-Y057	2
BEARING-ROLLER,30X50X17 (Ref # 92116)	92116-Y001	1
BOLT,FLANGE,8X20 (Ref # 92153)	92153-Y033	4
CLAMP,BOOT (Ref # 92173)	92173-Y098	2
SHIM,DRIVEN,T=1.15 (Ref # 92180)	92180-Y083	1
SHIM,DRIVEN,A,0.575 (Ref # 92180A)	92180-Y102	AR
SHIM,DRIVEN,B,0.625 (Ref # 92180B)	92180-Y103	AR
SHIM,DRIVEN,C,0.675 (Ref # 92180C)	92180-Y104	AR
SHIM,DRIVEN,D,0.725 (Ref # 92180D)	92180-Y105	AR
SHIM,DRIVEN,E,0.775 (Ref # 92180E)	92180-Y106	AR
SHIM,DRIVEN,F,0.825 (Ref # 92180F)	92180-Y107	AR
SHIM,DRIVEN,G,0.875 (Ref # 92180G)	92180-Y108	AR
SHIM,DRIVEN,H,0.925 (Ref # 92180H)	92180-Y109	AR
SHIM,DRIVEN,I,0.975 (Ref # 92180I)	92180-Y110	AR
SHIM,DRIVEN,J,1.025 (Ref # 92180J)	92180-Y111	AR
SHIM,DRIVEN,K,1.075 (Ref # 92180K)	92180-Y112	AR
SHIM,DRIVEN,M,1.175 (Ref # 92180L)	92180-Y113	AR
SHIM,DRIVEN,N,1.225 (Ref # 92180M)	92180-Y114	AR

# 2026 Brute Force 450

## PARTS LIST

### Drive Shaft-Propeller

ITEM NAME	PART NUMBER	QUANTITY
WASHER,22X34X2.5 (Ref # 92200)	92200-Y115	1
WASHER,16MM (Ref # 92200A)	92200-Y116	2
NUT,22MM (Ref # 92210)	92210-Y105	1
NUT,HEX,16MM (Ref # 92210A)	92210-Y106	2