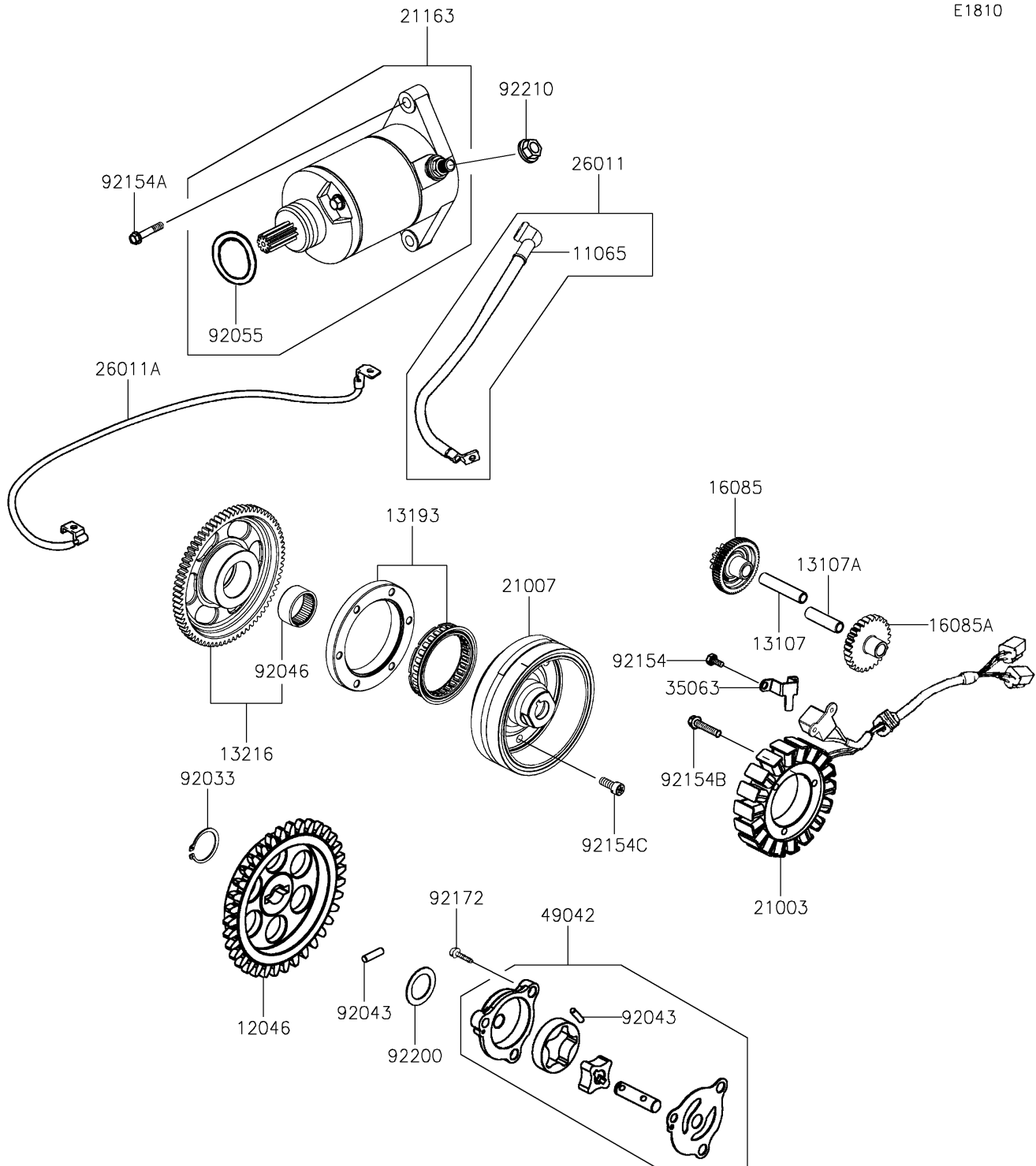


# 2026 Brute Force 450

## PARTS DIAGRAM

### Generator

E1810



# 2026 Brute Force 450

## PARTS LIST

### Generator

| ITEM NAME                               | PART NUMBER | QUANTITY |
|---|-------------|----------|
| CAP,TERMINAL (Ref # 11065)              | 11065-Y048  | 1        |
| SPROCKET,OIL PUMP DRIVEN (Ref # 12046)  | 12046-Y009  | 1        |
| SHAFT,STARTER REDUCTION (Ref # 13107)   | 13107-Y041  | 1        |
| SHAFT,STARTER REDUCTION (Ref # 13107A)  | 13107-Y042  | 1        |
| CLUTCH-ASSY-ONEWAY (Ref # 13193)        | 13193-Y004  | 1        |
| GEAR-COMP,STARTING CLUTCH (Ref # 13216) | 13216-Y009  | 1        |
| GEAR,STARTER REDUCTION (Ref # 16085)    | 16085-Y026  | 1        |
| GEAR,STARTER REDUCTION (Ref # 16085A)   | 16085-Y027  | 1        |
| STATOR,D406 (Ref # 21003)               | 21003-Y011  | 1        |
| ROTOR,D406 (Ref # 21007)                | 21007-Y011  | 1        |
| STARTER-ELECTRIC (Ref # 21163)          | 21163-Y008  | 1        |
| WIRE-LEAD,START MOTOR (Ref # 26011)     | 26011-Y020  | 1        |
| WIRE-LEAD,EARTH (Ref # 26011A)          | 26011-Y022  | 1        |
| STAY,STATOR (Ref # 35063)               | 35063-Y049  | 1        |
| PUMP-OIL (Ref # 49042)                  | 49042-Y007  | 1        |
| RING-SNAP,10MM (Ref # 92033)            | 92033-Y019  | 1        |
| PIN,DOWEL,4X16 (Ref # 92043)            | 92043-Y059  | 2        |
| BEARING-NEEDLE,31X39X18 (Ref # 92046)   | 92046-Y014  | 1        |
| RING-O,24.4X3.1 (Ref # 92055)           | 92055-Y025  | 1        |
| BOLT,HEX,5X12 (Ref # 92154)             | 92154-Y111  | 2        |
| BOLT,FLANGE,6X28 (Ref # 92154A)         | 92154-Y255  | 2        |
| BOLT,FLANGE,6X32 (Ref # 92154B)         | 92154-Y256  | 3        |
| BOLT,SOCKET,8X20 (Ref # 92154C)         | 92154-Y261  | 6        |
| SCREW,PAN,6X25 (Ref # 92172)            | 92172-Y097  | 3        |
| WASHER,10.5MM (Ref # 92200)             | 92200-Y100  | 1        |
| NUT,6MM (Ref # 92210)                   | 92210-Y039  | 1        |