

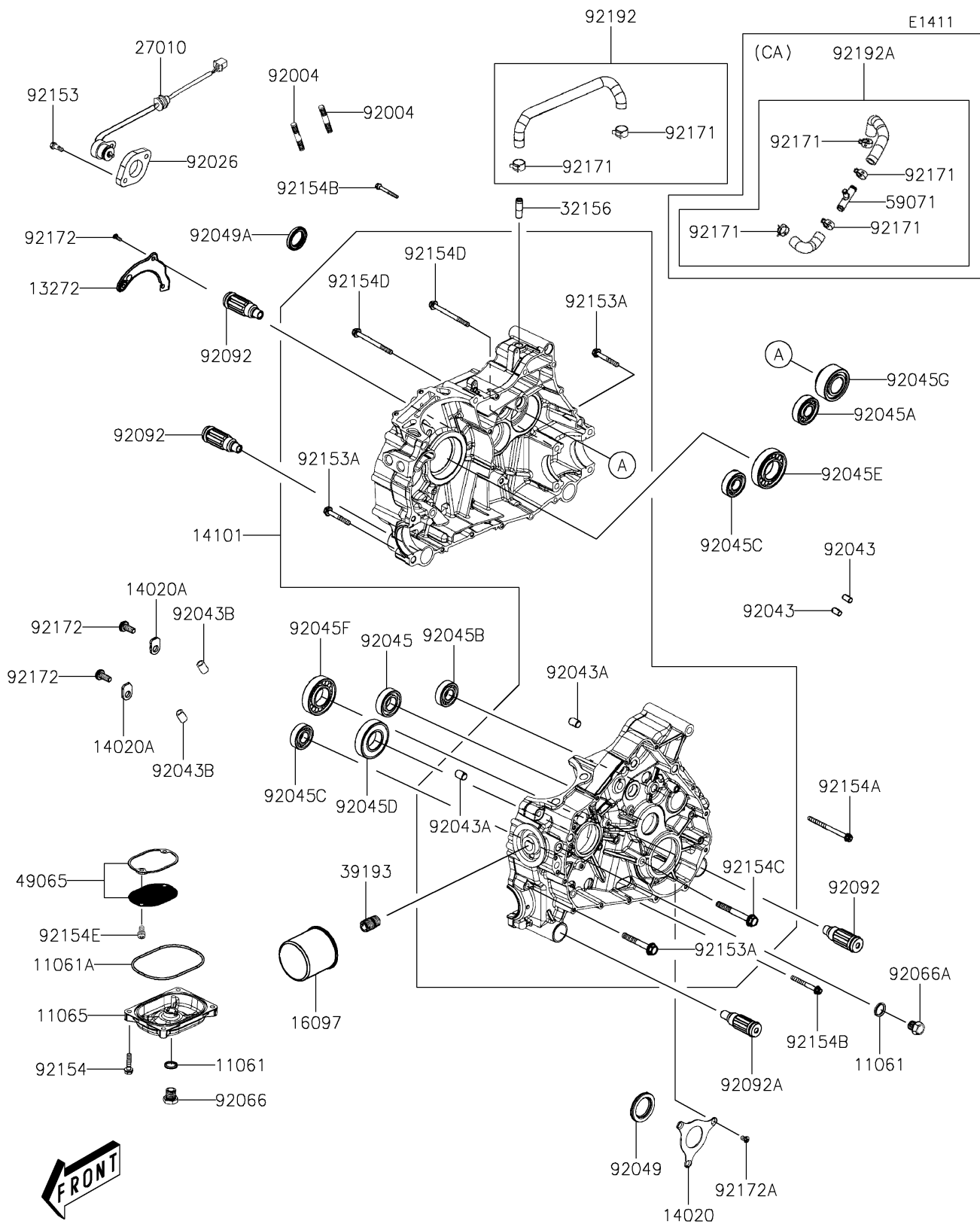
# 2026 Brute Force 450

## PARTS DIAGRAM

### Crankcase

**Kawasaki**

Let the Good Times Roll®



# 2026 Brute Force 450

## PARTS LIST

### Crankcase

| ITEM NAME                               | PART NUMBER | QUANTITY |
|---|-------------|----------|
| GASKET (Ref # 11061)                    | 11061-Y064  | 2        |
| GASKET,OIL STRAINER CAP (Ref # 11061A)  | 11061-Y077  | 1        |
| CAP,OIL STRAINER (Ref # 11065)          | 11065-Y046  | 1        |
| PLATE,OIL GUIDE (Ref # 13272)           | 13272-Y045  | 1        |
| RETAINER (Ref # 14020)                  | 14020-Y001  | 1        |
| RETAINER (Ref # 14020A)                 | 14020-Y002  | 2        |
| SET-CRANKCASE (Ref # 14101)             | 14101-Y001  | 1        |
| FILTER-ASSY-OIL (Ref # 16097)           | 16097-Y001  | 1        |
| SWITCH,GEAR CHANGE (Ref # 27010)        | 27010-Y028  | 1        |
| PIPE,BREATHER (Ref # 32156)             | 32156-Y001  | 1        |
| PIPE-OIL (Ref # 39193)                  | 39193-Y001  | 1        |
| FILTER-OIL (Ref # 49065)                | 49065-Y001  | 1        |
| JOINT,3WAY (Ref # 59071)                | 59071-Y013  | 1        |
| STUD,6X40 (Ref # 92004)                 | 92004-Y013  | 2        |
| SPACER,GEAR CHANGE SENSOR (Ref # 92026) | 92026-Y014  | 1        |
| PIN,8X10 (Ref # 92043)                  | 92043-Y026  | 2        |
| PIN,12X20 (Ref # 92043A)                | 92043-Y027  | 2        |
| PIN,DOWEL (Ref # 92043B)                | 92043-Y058  | 2        |
| BEARING-BALL,6205 (Ref # 92045)         | 92045-Y015  | 1        |
| BEARING-BALL,6304 (Ref # 92045A)        | 92045-Y016  | 1        |
| BEARING-BALL,6204 (Ref # 92045B)        | 92045-Y041  | 1        |
| BEARING-BALL,ESB204JR2C3 (Ref # 92045C) | 92045-Y057  | 2        |
| BEARING-BALL,6207LUAC3 (Ref # 92045D)   | 92045-Y058  | 1        |
| BEARING-BALL,6207-9C3 (Ref # 92045E)    | 92045-Y059  | 1        |
| BEARING-BALL,6207 (Ref # 92045F)        | 92045-Y061  | 1        |
| BEARING-BALL,30X62X23.8 (Ref # 92045G)  | 92045-Y066  | 1        |
| SEAL-OIL,34X52X6 (Ref # 92049)          | 92049-Y054  | 1        |
| SEAL-OIL,30X44X7 (Ref # 92049A)         | 92049-Y056  | 1        |
| PLUG,DRAIN (Ref # 92066)                | 92066-Y027  | 1        |

# 2026 Brute Force 450

## PARTS LIST

### Crankcase

| ITEM NAME                                     | PART NUMBER | QUANTITY |
|---|-------------|----------|
| PLUG,CRANKCASE (Ref # 92066A)                 | 92066-Y028  | 1        |
| BUSHING-RUBBER,ENGINE HANGER (Ref # 92092)    | 92092-Y007  | 3        |
| BUSHING-RUBBER,ENG HANGER,LONG (Ref # 92092A) | 92092-Y008  | 1        |
| BOLT,FLANGE,5X22 (Ref # 92153)                | 92153-Y006  | 2        |
| BOLT,FLANGE,8X50 (Ref # 92153A)               | 92153-Y037  | 4        |
| BOLT,FLANGE,6X25 (Ref # 92154)                | 92154-Y066  | 4        |
| BOLT,FLANGE,6X70 (Ref # 92154A)               | 92154-Y108  | 3        |
| BOLT,FLANGE,6X45 (Ref # 92154B)               | 92154-Y135  | 10       |
| BOLT,FLANGE,8X60 (Ref # 92154C)               | 92154-Y141  | 1        |
| BOLT,FLANGE,8X85 (Ref # 92154D)               | 92154-Y196  | 3        |
| BOLT,5X12 (Ref # 92154E)                      | 92154-Y241  | 2        |
| CLAMP (Ref # 92171)                           | 92171-Y022  | 4        |
| SCREW,PAN,6X14 (Ref # 92172)                  | 92172-Y099  | 5        |
| SCREW,6X16 (Ref # 92172A)                     | 92172-Y101  | 3        |
| TUBE,CRANKCASE (Ref # 92192A)                 | 92192-Y086  | 1        |
| CLAMP (Ref # 92171)                           | 92171-Y022  | 2        |
| TUBE,CRANKCASE (Ref # 92192)                  | 92192-Y078  | 1        |