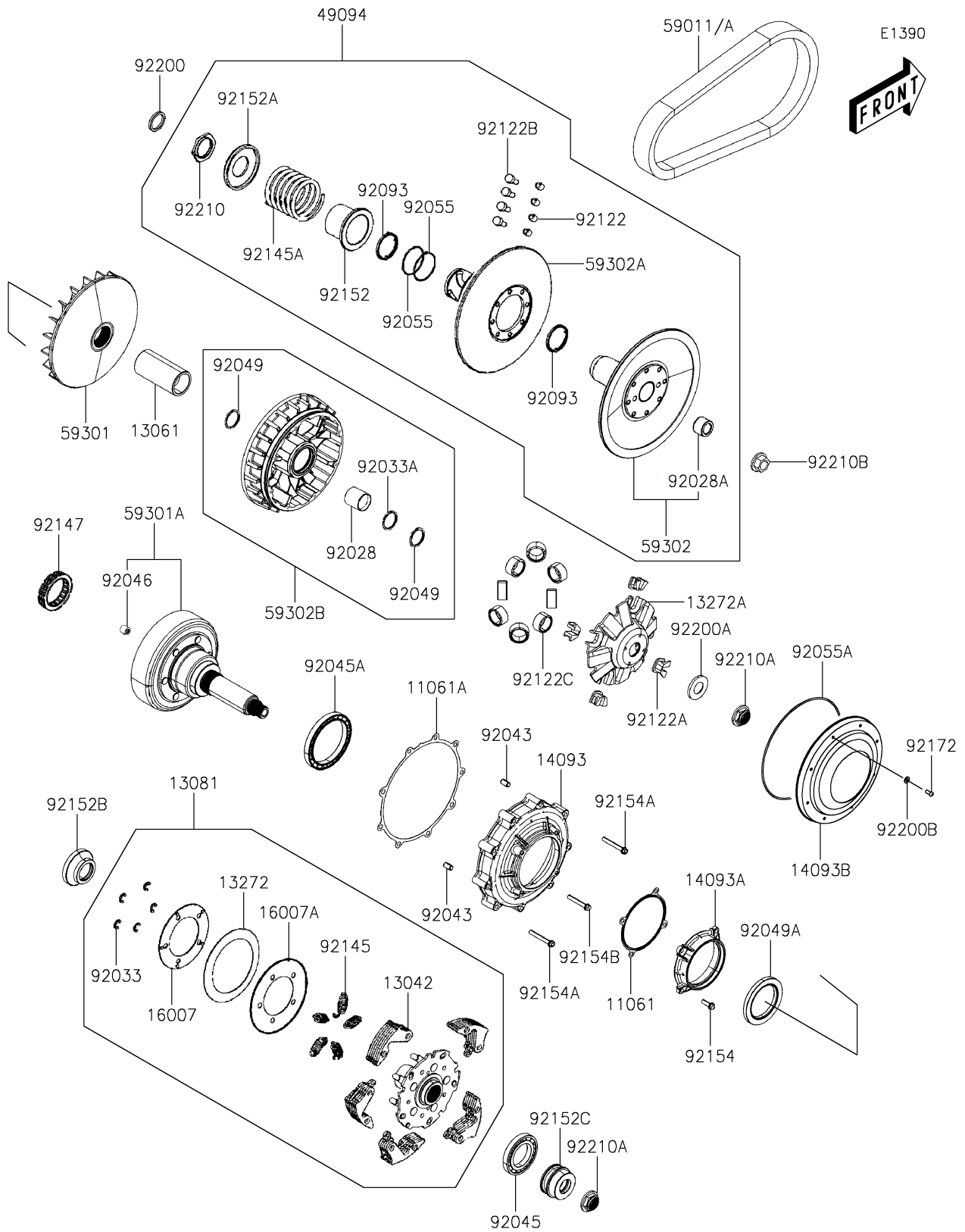


2023 MULE PRO-MX™ EPS CAMO

PARTS DIAGRAM

Belt Converter



2023 MULE PRO-MX™ EPS CAMO

PARTS LIST

Belt Converter

ITEM NAME	PART NUMBER	QUANTITY
GASKET,PRIMARY SHAFT COVER (Ref # 11061)	11061-Y059	1
GASKET,CLUTCH COVER (Ref # 11061A)	11061-Y060	1
WEIGHT,CLUTCH (Ref # 13042)	13042-Y008	5
BOSS,DRIVE FACE (Ref # 13061)	13061-Y004	1
CLUTCH-ASSY,PRIMARY (Ref # 13081)	13081-Y001	1
PLATE,ADJUSTER SPRING (Ref # 13272)	13272-Y027	1
PLATE,RAMP (Ref # 13272A)	13272-Y028	1
COVER,CLUTCH (Ref # 14093)	14093-Y004	1
COVER,PRIMARY SHAFT (Ref # 14093A)	14093-Y005	1
COVER,MOVABLE (Ref # 14093B)	14093-Y050	1
SEAT-SPRING (Ref # 16007)	16007-Y007	1
SEAT-SPRING (Ref # 16007A)	16007-Y008	1
CONVERTER-ASSY-DRIVEN (Ref # 49094)	49094-Y007	1
BELT,DRIVE(STD) (Ref # 59011)	59011-Y006	1
BELT,DRIVE(OPTION) (Ref # 59011A)	59011-Y010	1
SHEAVE-MOVABLE (Ref # 59301)	59301-Y006	1
SHEAVE-MOVABLE,PRIMARY DRIVE (Ref # 59301A)	59301-Y007	1
SHEAVE-COMP,MOVABLE (Ref # 59302)	59302-Y017	1
SHEAVE-COMP (Ref # 59302A)	59302-Y018	1
SHEAVE-COMP,MOVABLE (Ref # 59302B)	59302-Y020	1
BUSHING,42X47X45.6 (Ref # 92028)	92028-Y002	1
BUSHING (Ref # 92028A)	92028-Y003	1
RING-SNAP,7MM (Ref # 92033)	92033-Y042	5
RING-SNAP,46.5MM (Ref # 92033A)	92033-Y043	1
PIN,8X14 (Ref # 92043)	92043-Y012	2
BEARING-BALL,16008 (Ref # 92045)	92045-Y046	1
BEARING-BALL,6815 (Ref # 92045A)	92045-Y052	1
BEARING-NEEDLE,14X22X20 (Ref # 92046)	92046-Y010	1
SEAL-OIL,42X51X4 (Ref # 92049)	92049-Y043	2

2023 MULE PRO-MX™ EPS CAMO

PARTS LIST

Belt Converter

ITEM NAME	PART NUMBER	QUANTITY
SEAL-OIL,6.5X80X7 (Ref # 92049A)	92049-Y047	1
RING-O (Ref # 92055)	92055-Y065	2
RING-O,166X2.0 (Ref # 92055A)	92055-Y072	1
SEAL,DRIVEN FACE,40.2X47X4 (Ref # 92093)	92093-Y045	2
ROLLER,GUIDE (Ref # 92122)	92122-Y008	4
ROLLER (Ref # 92122A)	92122-Y018	4
ROLLER,GUIDE (Ref # 92122B)	92122-Y019	4
ROLLER,COMP,WEIGHT (Ref # 92122C)	92122-Y022	8
SPRING,CLUTCH (Ref # 92145)	92145-Y058	5
SPRING,DRIVEN FACE (Ref # 92145A)	92145-Y074	1
BEARING,ONE WAY (Ref # 92147)	92147-Y001	1
COLLAR,SEAL (Ref # 92152)	92152-Y058	1
COLLAR,SPRING (Ref # 92152A)	92152-Y059	1
COLLAR,CLUTCH (Ref # 92152B)	92152-Y069	1
COLLAR,PRIMARY DRIVE SHAFT (Ref # 92152C)	92152-Y070	1
BOLT,FLANGE,6X18 (Ref # 92154)	92154-Y132	4
BOLT,FLANGE,6X45 (Ref # 92154A)	92154-Y135	2
BOLT,FLANGE,6X40 (Ref # 92154B)	92154-Y209	7
SCREW,4X12 (Ref # 92172)	92172-Y088	8
WASHER,25X33X4 (Ref # 92200)	92200-Y073	1
WASHER,THRUST,20MM (Ref # 92200A)	92200-Y087	1
WASHER (Ref # 92200B)	92200-Y103	8
NUT,SPECIAL,36MM (Ref # 92210)	92210-Y082	1
NUT,FLANGE,20MM (Ref # 92210A)	92210-Y084	2
NUT (Ref # 92210B)	92210-Y085	1