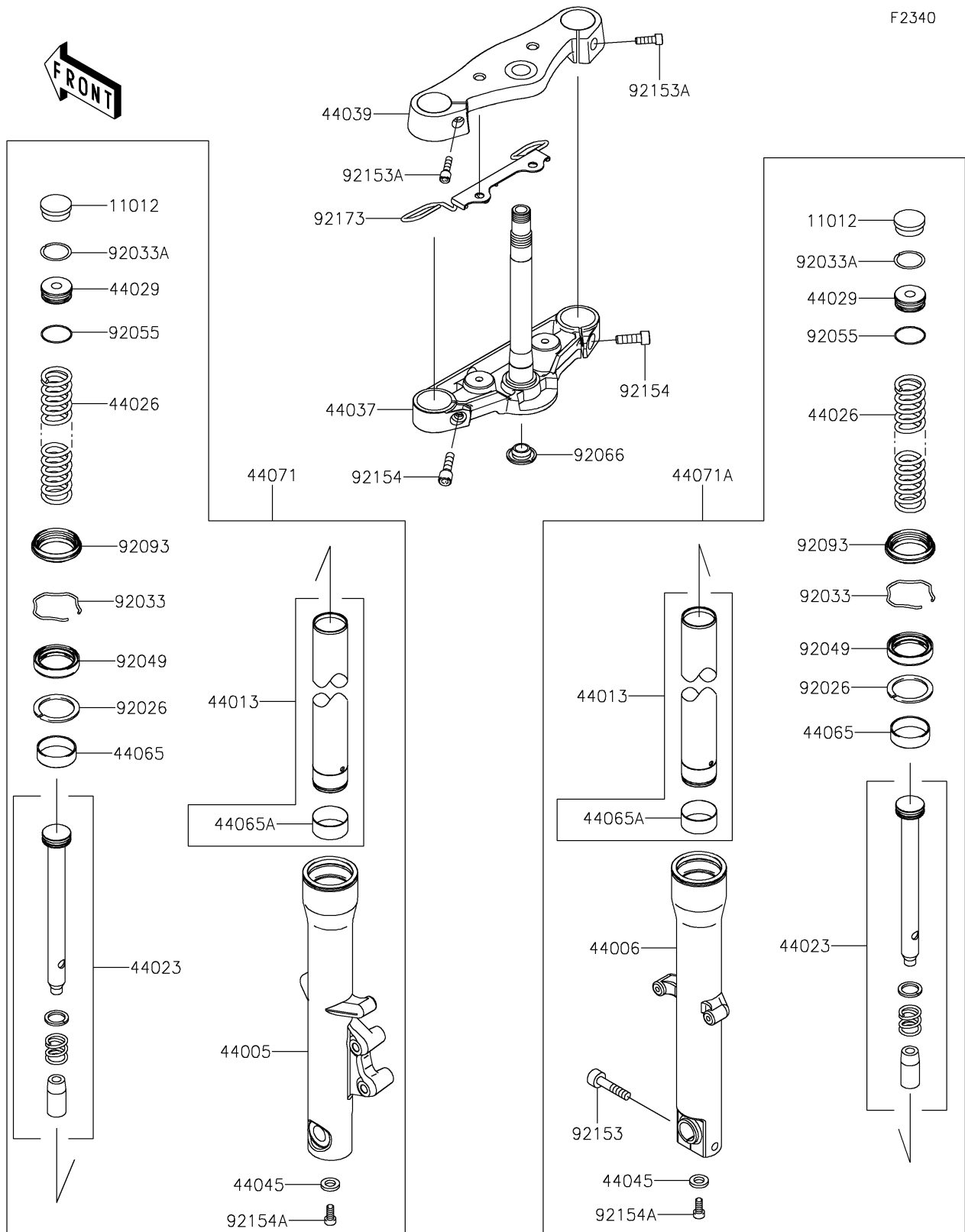


2025 Vulcan 900 Custom

PARTS DIAGRAM

Front Fork



2025 Vulcan 900 Custom

PARTS LIST

Front Fork

ITEM NAME	PART NUMBER	QUANTITY
CAP,FORK TOP (Ref # 11012)	11012-1618	2
PIPE-LEFT FORK OUTER (Ref # 44005)	44005-0107	1
PIPE-RIGHT FORK OUTER (Ref # 44006)	44006-0107	1
PIPE-FORK INNER (Ref # 44013)	44013-0257	2
CYLINDER-SET-FORK (Ref # 44023)	44023-0126	2
SPRING-FRONT FORK (Ref # 44026)	44026-0190	2
SEAT-FORK SPRING (Ref # 44029)	44029-0019	2
HOLDER-FORK UNDER,BLACK (Ref # 44037)	44037-0098-10	1
HOLDER-FORK UPPER,BLACK (Ref # 44039)	44039-0087-10	1
GASKET,FORK CYLINDER BOLT (Ref # 44045)	44045-051	2
BUSHING-FRONT FORK (Ref # 44065)	44065-0019	2
BUSHING-FRONT FORK,INNER PIPE (Ref # 44065A)	44065-1087	2
DAMPER-ASSY,FORK,LH (Ref # 44071)	44071-1093	1
DAMPER-ASSY,FORK,RH (Ref # 44071A)	44071-1094	1
SPACER,FORK (Ref # 92026)	92026-0090	2
RING-SNAP (Ref # 92033)	92033-0756	2
RING-SNAP (Ref # 92033A)	92033-0757	2
SEAL-OIL (Ref # 92049)	92049-0058	2
RING-O,SPRING SEAT (Ref # 92055)	92055-1363	2
PLUG (Ref # 92066)	92066-0078	1
SEAL,DUST (Ref # 92093)	92093-0659	2
BOLT (Ref # 92153)	92153-0533	1
BOLT,SOCKET,8X30 (Ref # 92153A)	92153-0712	2
BOLT,SOCKET,10X25 (Ref # 92154)	92154-0252	2
BOLT (Ref # 92154A)	92154-1677	2
CLAMP (Ref # 92173)	92173-0165	1