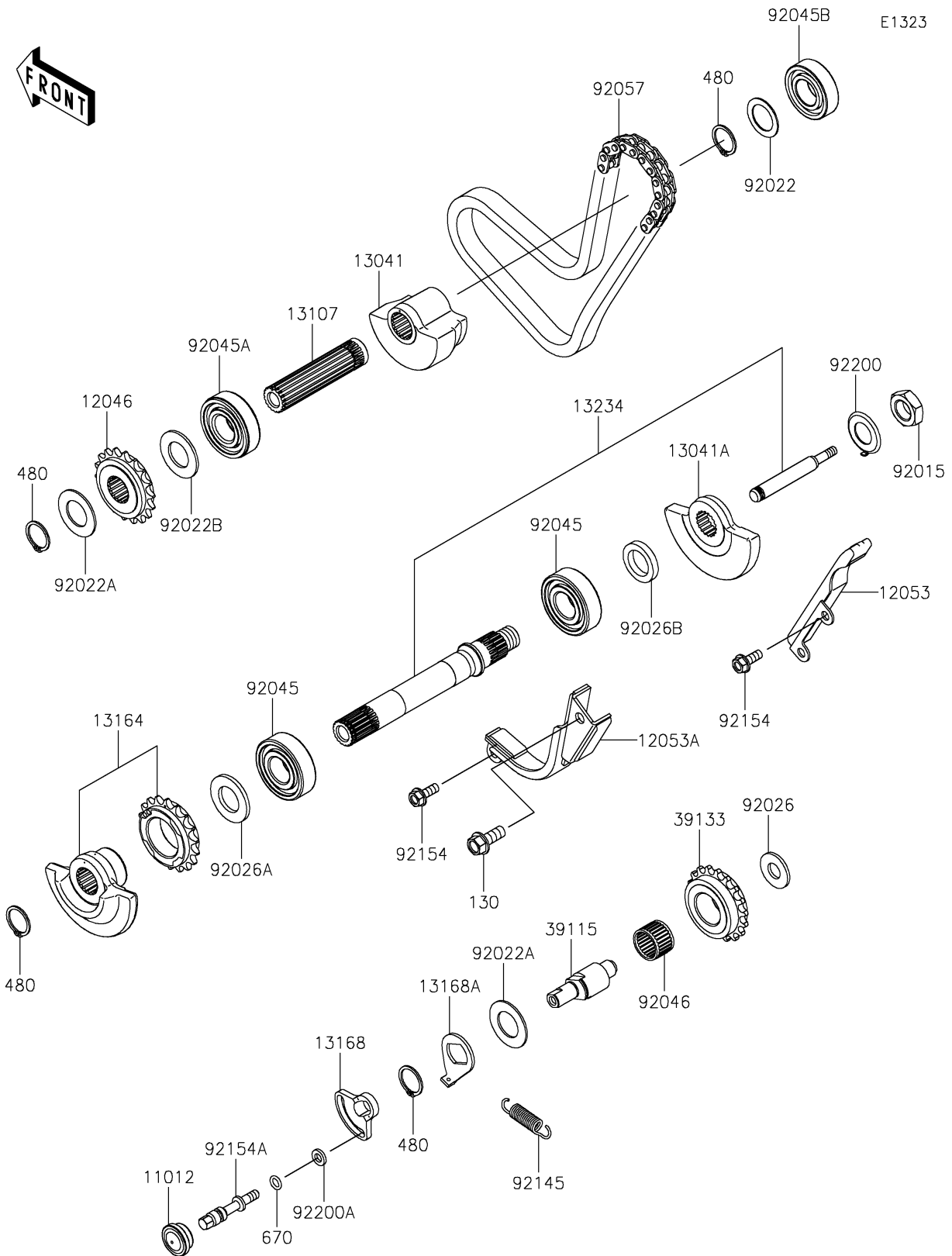


# 2026 KLR® 650 S ABS

## PARTS DIAGRAM

### Balancer



# 2026 KLR<sup>®</sup> 650 S ABS

## PARTS LIST

### Balancer

ITEM NAME	PART NUMBER	QUANTITY
CAP (Ref # 11012)	11012-1369	1
SPROCKET,BALANCER,18T (Ref # 12046)	12046-1165	1
GUIDE-CHAIN,RR (Ref # 12053)	12053-1111	1
GUIDE-CHAIN,FR (Ref # 12053A)	12053-1175	1
BALANCER,RR (Ref # 13041)	13041-0032	1
BALANCER,FR,RH (Ref # 13041A)	13041-0034	1
SHAFT,BALANCER,RR (Ref # 13107)	13107-1104	1
BALANCER-COMP,FR,LH (Ref # 13164)	13164-0002	1
LEVER,IDLER SHAFT (Ref # 13168)	13168-0184	1
LEVER (Ref # 13168A)	13168-0911	1
SHAFT-COMP,BALANCER,FR (Ref # 13234)	13234-0035	1
SHAFT-IDLER (Ref # 39115)	39115-0022	1
SPROCKET-IDLER,IDLER (Ref # 39133)	39133-1060	1
NUT,16MM (Ref # 92015)	92015-1477	1
WASHER,20.5X30X1,STEEL (Ref # 92022)	92022-112	1
WASHER,20.3X36X1.5 (Ref # 92022A)	92022-1489	2
WASHER,20.2X36X2 (Ref # 92022B)	92022-1880	1
SPACER,12.2X27X2.3 (Ref # 92026)	92026-0151	1
SPACER,20.2X36X3 (Ref # 92026A)	92026-0155	1
SPACER,20.2X30X5 (Ref # 92026B)	92026-1245	1
BEARING-BALL,20X47X14 (Ref # 92045)	92045-0070	2
BEARING-BALL (Ref # 92045A)	92045-0071	1
BEARING-BALL,20X42X12 (Ref # 92045B)	92045-0072	1
BEARING-NEEDLE (Ref # 92046)	92046-0640	1
CHAIN,BALANCER,BF06HX70L (Ref # 92057)	92057-0888	1
SPRING (Ref # 92145)	92145-0529	1
BOLT,FLANGED,6X16 (Ref # 92154)	92154-1428	3
BOLT,IDLER LEVER (Ref # 92154A)	92154-4358	1
WASHER (Ref # 92200)	92200-0558	1

# 2026 KLR<sup>®</sup> 650 S ABS

## PARTS LIST

### Balancer

ITEM NAME	PART NUMBER	QUANTITY
WASHER,6.5X12X2.0 (Ref # 92200A)	92200-1263	1
BOLT-FLANGED,8X20 (Ref # 130)	130CA0820	1
CIRCLIP-TYPE-C,20MM (Ref # 480)	480J2000	4
O RING,7MM (Ref # 670)	670B1507	1