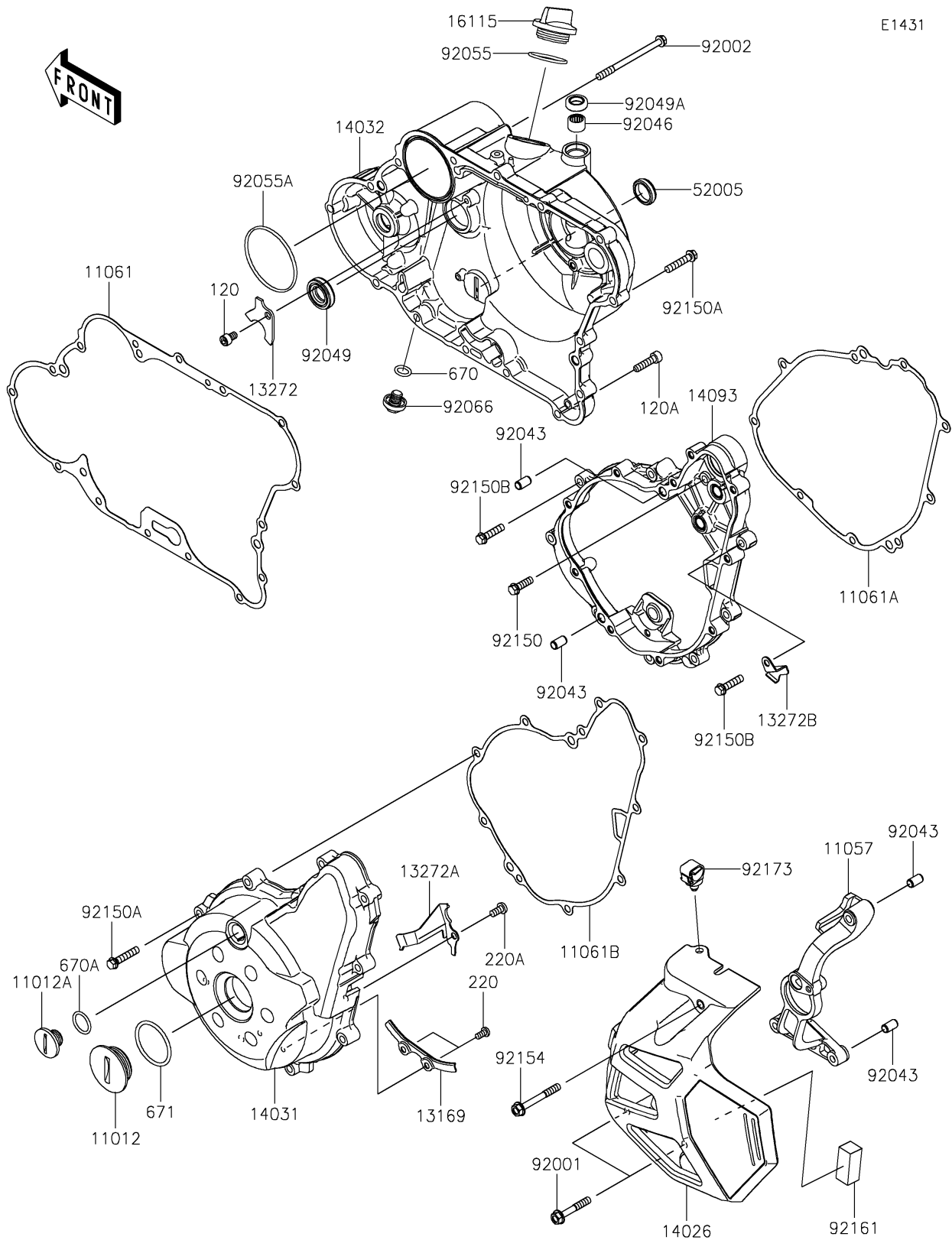


2026 KLR® 650 ABS

PARTS DIAGRAM

Engine Cover(s)



2026 KLR® 650 ABS

PARTS LIST

Engine Cover(s)

ITEM NAME	PART NUMBER	QUANTITY
CAP (Ref # 11012)	11012-1362	1
CAP,TOP MARK (Ref # 11012A)	11012-1363	1
BRACKET,SPEED SENSOR (Ref # 11057)	11057-4312	1
GASKET,CLUTCH COVER (Ref # 11061)	11061-0429	1
GASKET,GENERATOR CASE COVER (Ref # 11061A)	11061-1486	1
GASKET,GENERATOR COVER (Ref # 11061B)	11061-1487	1
PLATE,PULSING COIL LEAD (Ref # 13169)	13169-1882	1
PLATE,OIL SEAL (Ref # 13272)	13272-0863	1
PLATE,GENERATOR (Ref # 13272A)	13272-0869	1
PLATE,GENERATOR (Ref # 13272B)	13272-3871	1
COVER-CHAIN (Ref # 14026)	14026-0153	1
COVER-GENERATOR (Ref # 14031)	14031-0126	1
COVER-CLUTCH (Ref # 14032)	14032-0674	1
COVER,GENERATOR CASE (Ref # 14093)	14093-1080	1
CAP-OIL FILLER (Ref # 16115)	16115-1068	1
GAUGE,OIL LEVEL (Ref # 52005)	52005-1009	1
BOLT,6X38 (Ref # 92001)	92001-1899	2
BOLT,FLANGED,6X80 (Ref # 92002)	92002-1568	1
PIN,6.2X8X14 (Ref # 92043)	92043-1263	4
BEARING-NEEDLE,HK1210FM (Ref # 92046)	92046-0034	1
SEAL-OIL,SCY 15X30X7 (Ref # 92049)	92049-1158	1
SEAL-OIL (Ref # 92049A)	92049-1560	1
RING-O,31.5X2.6 (Ref # 92055)	92055-049	1
RING-O,62.6X66X3.1 (Ref # 92055A)	92055-1221	1
PLUG,DRAIN (Ref # 92066)	92066-1156	1
BOLT,6X20 (Ref # 92150)	92150-1010	1
BOLT,6X30 (Ref # 92150A)	92150-1021	23
BOLT,FLANGED-SMALL,6X25 (Ref # 92150B)	92150-1779	8
BOLT,FLANGED,6X50 (Ref # 92154)	92154-4222	1

2026 KLR[®] 650 ABS

PARTS LIST

Engine Cover(s)

ITEM NAME	PART NUMBER	QUANTITY
DAMPER,15X35X15 (Ref # 92161)	92161-2359	1
CLAMP,12MM DIA. (Ref # 92173)	92173-0736	1
BOLT-SOCKET,6X10 (Ref # 120)	120CA0610	1
BOLT-SOCKET,6X25 (Ref # 120A)	120CB0625	1
SCREW-PAN-CROS,5X10 (Ref # 220)	220AA0510	2
SCREW-PAN-CROS,6X12 (Ref # 220A)	220AA0612	1
O RING,11MM (Ref # 670)	670B2011	1
O RING,18MM (Ref # 670A)	670B2018	1
O RING,40MM (Ref # 671)	671B2540	1