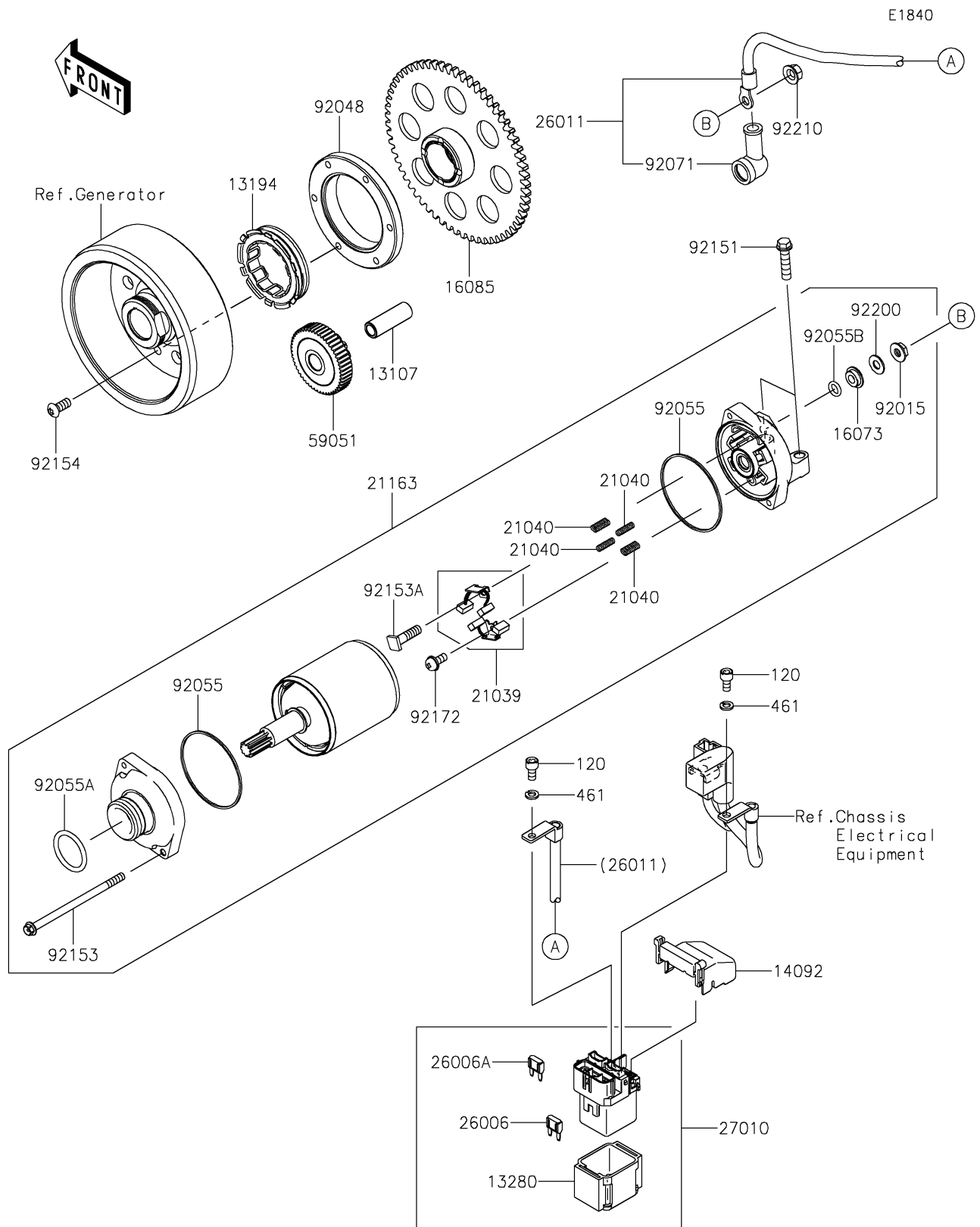


# 2025 NINJA® 1100SX SE ABS

## PARTS DIAGRAM

### Starter Motor



# 2025 NINJA® 1100SX SE ABS

## PARTS LIST

### Starter Motor

ITEM NAME	PART NUMBER	QUANTITY
SHAFT,IDLER GEAR (Ref # 13107)	13107-1377	1
CLUTCH-ONEWAY (Ref # 13194)	13194-1096	1
HOLDER,MAGNETIC SWITCH (Ref # 13280)	13280-0814	1
COVER (Ref # 14092)	14092-0109	1
INSULATOR (Ref # 16073)	16073-0053	1
GEAR,CLUTCH ONEWAY (Ref # 16085)	16085-0609	1
BRUSH,CARBON (Ref # 21039)	21039-0004	1
SPRING-BRUSH (Ref # 21040)	21040-0003	4
STARTER-ELECTRIC (Ref # 21163)	21163-0748	1
FUSE,MINI BLADE,15A,BLUE (Ref # 26006)	26006-0001	1
FUSE,MINI BLADE,30A,GREEN (Ref # 26006A)	26006-1080	1
WIRE-LEAD (Ref # 26011)	26011-0951	1
SWITCH (Ref # 27010)	27010-0770	1
GEAR-SPUR,IDLER (Ref # 59051)	59051-0762	1
NUT,STARTER MOTOR (Ref # 92015)	92015-1476	1
RACE (Ref # 92048)	92048-0018	1
RING-O (Ref # 92055)	92055-0136	2
RING-O (Ref # 92055A)	92055-1276	1
RING-O,4.5X2.0 (Ref # 92055B)	92055-1370	1
GROMMET (Ref # 92071)	92071-0024	1
BOLT,FLANGED-SMALL,6X25 (Ref # 92151)	92151-1930	2
BOLT (Ref # 92153)	92153-1850	2
BOLT (Ref # 92153A)	92153-1866	1
BOLT,TORX,6X14 (Ref # 92154)	92154-2448	6
SCREW (Ref # 92172)	92172-0334	1
WASHER (Ref # 92200)	92200-0386	1
NUT,6MM (Ref # 92210)	92210-0188	1
BOLT-SOCKET,5X10 (Ref # 120)	120CB0510	2
WASHER-SPRING,5MM (Ref # 461)	461DB0500	2