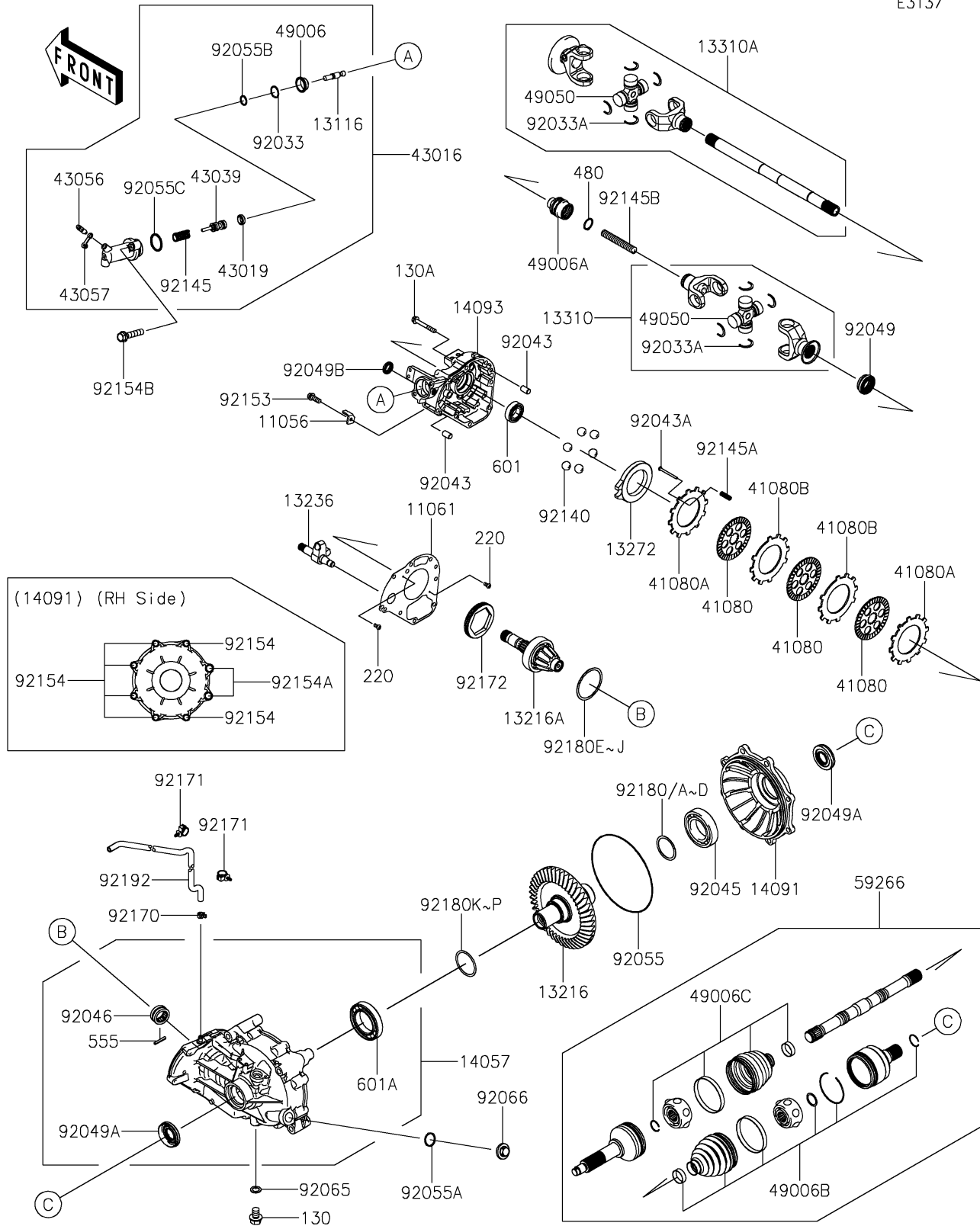


# 2016 TERYX4™ CAMO

## PARTS DIAGRAM

### Drive Shaft-Rear

E3137



# 2016 TERYX4™ CAMO

## PARTS LIST

### Drive Shaft-Rear

| ITEM NAME                               | PART NUMBER | QUANTITY |
|---|-------------|----------|
| BRACKET (Ref # 11056)                   | 11056-1447  | 1        |
| GASKET,FR COVER (Ref # 11061)           | 11061-0270  | 1        |
| ROD-PUSH (Ref # 13116)                  | 13116-0026  | 1        |
| GEAR-COMP,RING GEAR,44T (Ref # 13216)   | 13216-0885  | 1        |
| GEAR-COMP,PINION,10T (Ref # 13216A)     | 13216-0886  | 1        |
| LEVER-COMP,BRAKE (Ref # 13236)          | 13236-0706  | 1        |
| PLATE,CAM (Ref # 13272)                 | 13272-1203  | 1        |
| SHAFT-ASSY,GEAR-ASSY SIDE (Ref # 13310) | 13310-0034  | 1        |
| SHAFT-ASSY,ENGINE SIDE (Ref # 13310A)   | 13310-0043  | 1        |
| CASE-COMP-GEAR (Ref # 14057)            | 14057-0019  | 1        |
| COVER,RH (Ref # 14091)                  | 14091-0677  | 1        |
| COVER,FR (Ref # 14093)                  | 14093-0428  | 1        |
| DISC,FRICTION (Ref # 41080)             | 41080-1482  | 3        |
| DISC,PRESSURE (Ref # 41080A)            | 41080-1483  | 2        |
| DISC,SEPARATER (Ref # 41080B)           | 41080-1484  | 2        |
| CYLINDER-MASTER (Ref # 43016)           | 43016-0556  | 1        |
| CUP-BRAKE (Ref # 43019)                 | 43019-0002  | 1        |
| PISTON-BRAKE (Ref # 43039)              | 43039-0006  | 1        |
| BREATHER-BRAKE (Ref # 43056)            | 43056-1056  | 1        |
| CAP-BREATHER (Ref # 43057)              | 43057-1001  | 1        |
| BOOT (Ref # 49006)                      | 49006-0072  | 1        |
| BOOT,GEAR ASSY SIDE (Ref # 49006A)      | 49006-0108  | 1        |
| BOOT,INSIDE (Ref # 49006B)              | 49006-0596  | 2        |
| BOOT,OUTSIDE (Ref # 49006C)             | 49006-0597  | 2        |
| SPIDER (Ref # 49050)                    | 49050-0027  | 2        |
| JOINT-BALL,RR,CVJ (Ref # 59266)         | 59266-0715  | 2        |
| RING-SNAP (Ref # 92033)                 | 92033-0055  | 1        |
| RING-SNAP (Ref # 92033A)                | 92033-0735  | 8        |
| PIN,8X14 (Ref # 92043)                  | 92043-1567  | 2        |

# 2016 TERYX4™ CAMO

## PARTS LIST

### Drive Shaft-Rear

| ITEM NAME                             | PART NUMBER | QUANTITY |
|---------------------------------------|-------------|----------|
| PIN,3X35 (Ref # 92043A)               | 92043-1617  | 2        |
| BEARING-BALL,6210CM (Ref # 92045)     | 92045-1213  | 1        |
| BEARING-NEEDLE,AH502802 (Ref # 92046) | 92046-0024  | 1        |
| SEAL-OIL,25X45X9.5 (Ref # 92049)      | 92049-0739  | 1        |
| SEAL-OIL (Ref # 92049A)               | 92049-0773  | 2        |
| SEAL-OIL,TC17X28X6 (Ref # 92049B)     | 92049-1537  | 1        |
| RING-O,190.2X4.2 (Ref # 92055)        | 92055-0121  | 1        |
| RING-O (Ref # 92055A)                 | 92055-0122  | 1        |
| RING-O (Ref # 92055B)                 | 92055-0146  | 1        |
| RING-O (Ref # 92055C)                 | 92055-0147  | 1        |
| GASKET,10.5X16X1 (Ref # 92065)        | 92065-058   | 1        |
| PLUG (Ref # 92066)                    | 92066-1303  | 1        |
| BALL,D/O#12 (Ref # 92140)             | 92140-1064  | 6        |
| SPRING (Ref # 92145)                  | 92145-0882  | 1        |
| SPRING,RR BRAKE (Ref # 92145A)        | 92145-1301  | 2        |
| SPRING,PROPELLER SHAFT (Ref # 92145B) | 92145-1304  | 1        |
| BOLT,FLANGED-SMALL,6X16 (Ref # 92153) | 92153-1729  | 1        |
| BOLT,10X35 (Ref # 92154)              | 92154-1823  | 6        |
| BOLT,12X35 (Ref # 92154A)             | 92154-1824  | 2        |
| BOLT,FLANGED,8X40 (Ref # 92154B)      | 92154-1825  | 2        |
| CLAMP (Ref # 92170)                   | 92170-2043  | 1        |
| CLAMP (Ref # 92171)                   | 92171-0453  | 2        |
| SCREW,SET,85X11.5 (Ref # 92172)       | 92172-1122  | 1        |
| SHIM,T=0.95 (Ref # 92180)             | 92180-0813  | AR       |
| SHIM,T=1.10 (Ref # 92180A)            | 92180-0814  | AR       |
| SHIM,T=1.15 (Ref # 92180B)            | 92180-0815  | AR       |
| SHIM,T=1.30 (Ref # 92180C)            | 92180-0816  | AR       |
| SHIM,T=1.40 (Ref # 92180D)            | 92180-0817  | AR       |
| SHIM,70X80X0.15 (Ref # 92180E)        | 92180-0972  | AR       |

# 2016 TERYX4™ CAMO

## PARTS LIST

### Drive Shaft-Rear

| ITEM NAME                       | PART NUMBER | QUANTITY |
|---------------------------------|-------------|----------|
| SHIM,70X80X0.2 (Ref # 92180F)   | 92180-0973  | AR       |
| SHIM,70X80X0.5 (Ref # 92180G)   | 92180-0974  | AR       |
| SHIM,70X80X0.8 (Ref # 92180H)   | 92180-0975  | AR       |
| SHIM,70X80X1.0 (Ref # 92180I)   | 92180-0976  | AR       |
| SHIM,70X80X1.2 (Ref # 92180J)   | 92180-0977  | AR       |
| SHIM,55X64X0.15 (Ref # 92180K)  | 92180-1417  | AR       |
| SHIM,55X64X0.20 (Ref # 92180L)  | 92180-1418  | AR       |
| SHIM,55X64X0.50 (Ref # 92180M)  | 92180-1419  | AR       |
| SHIM,55X64X0.80 (Ref # 92180N)  | 92180-1420  | AR       |
| SHIM,55X64X1.00 (Ref # 92180O)  | 92180-1421  | AR       |
| SHIM,55X64X1.20 (Ref # 92180P)  | 92180-1422  | AR       |
| TUBE,BREATHER (Ref # 92192)     | 92192-1473  | 1        |
| BOLT-FLANGED,10X14 (Ref # 130)  | 130BA1014   | 1        |
| BOLT-FLANGED,8X60 (Ref # 130A)  | 130CA0860   | 8        |
| SCREW-PAN-CROS,4X8 (Ref # 220)  | 220AA0408   | 2        |
| CIRCLIP-TYPE-C,25MM (Ref # 480) | 480J2500    | 1        |
| PIN-SPRING (Ref # 555)          | 555A0428    | 1        |
| BEARING-BALL (Ref # 601)        | 601A6005    | 1        |
| BEARING-BALL (Ref # 601A)       | 601A6011    | 1        |