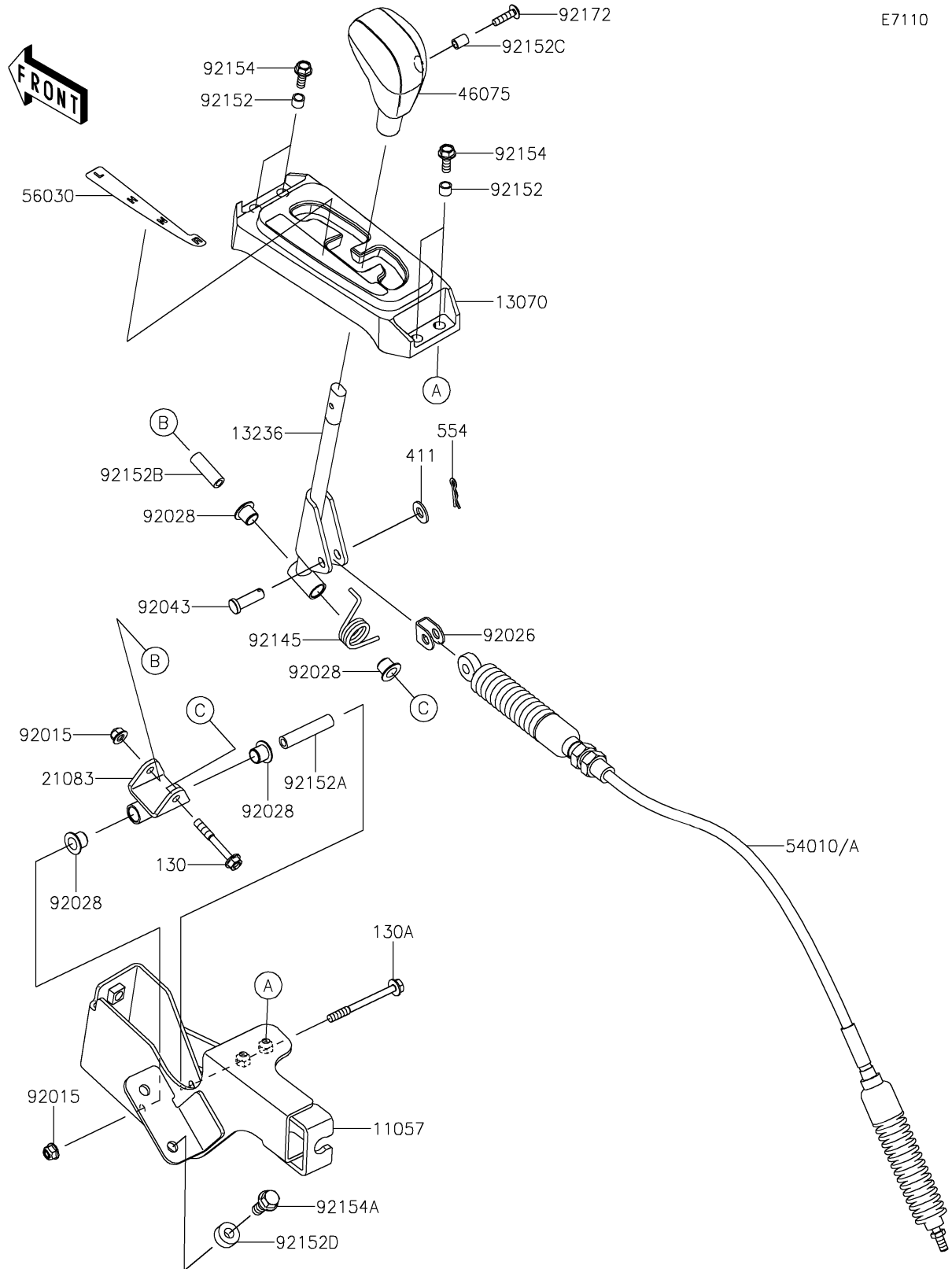


2016 TERYX4™

PARTS DIAGRAM

Control



E7110

2016 TERYX4™

PARTS LIST

Control

| ITEM NAME | PART NUMBER | QUANTITY |
|------------------------------------|-------------|----------|
| BRACKET,SHIFT (Ref # 11057) | 11057-1494 | 1 |
| GUIDE,SHIFT GAUGE (Ref # 13070) | 13070-0748 | 1 |
| LEVER-COMP,SHIFT (Ref # 13236) | 13236-0727 | 1 |
| ARM (Ref # 21083) | 21083-0710 | 1 |
| GRIP (Ref # 46075) | 46075-0569 | 1 |
| CABLE,SHIFT (Ref # 54010) | 54010-0583 | 1 |
| LABEL,SHIFT POSITION (Ref # 56030) | 56030-0849 | 1 |
| NUT,LOCK,FLANGED,6MM (Ref # 92015) | 92015-1675 | 2 |
| SPACER (Ref # 92026) | 92026-0074 | 1 |
| BUSHING (Ref # 92028) | 92028-1507 | 4 |
| PIN (Ref # 92043) | 92043-0053 | 1 |
| SPRING (Ref # 92145) | 92145-0832 | 1 |
| COLLAR (Ref # 92152) | 92152-1332 | 4 |
| COLLAR,6.0X10X47 (Ref # 92152A) | 92152-1517 | 1 |
| COLLAR,6.0X10X30 (Ref # 92152B) | 92152-1518 | 1 |
| COLLAR,5.6X8X10.5 (Ref # 92152C) | 92152-1545 | 1 |
| COLLAR,8.2X18X8 (Ref # 92152D) | 92152-1553 | 2 |
| BOLT,FLANGED,6X16 (Ref # 92154) | 92154-0887 | 4 |
| BOLT,FLANGED,8X20 (Ref # 92154A) | 92154-1104 | 2 |
| SCREW,5X20 (Ref # 92172) | 92172-2081 | 1 |
| BOLT-FLANGED,6X45 (Ref # 130) | 130CA0645 | 1 |
| BOLT-FLANGED,6X65 (Ref # 130A) | 130CA0665 | 1 |
| WASHER-PLAIN,8MM (Ref # 411) | 411AA0800 | 1 |
| PIN-SNAP (Ref # 554) | 554DA0800 | 1 |