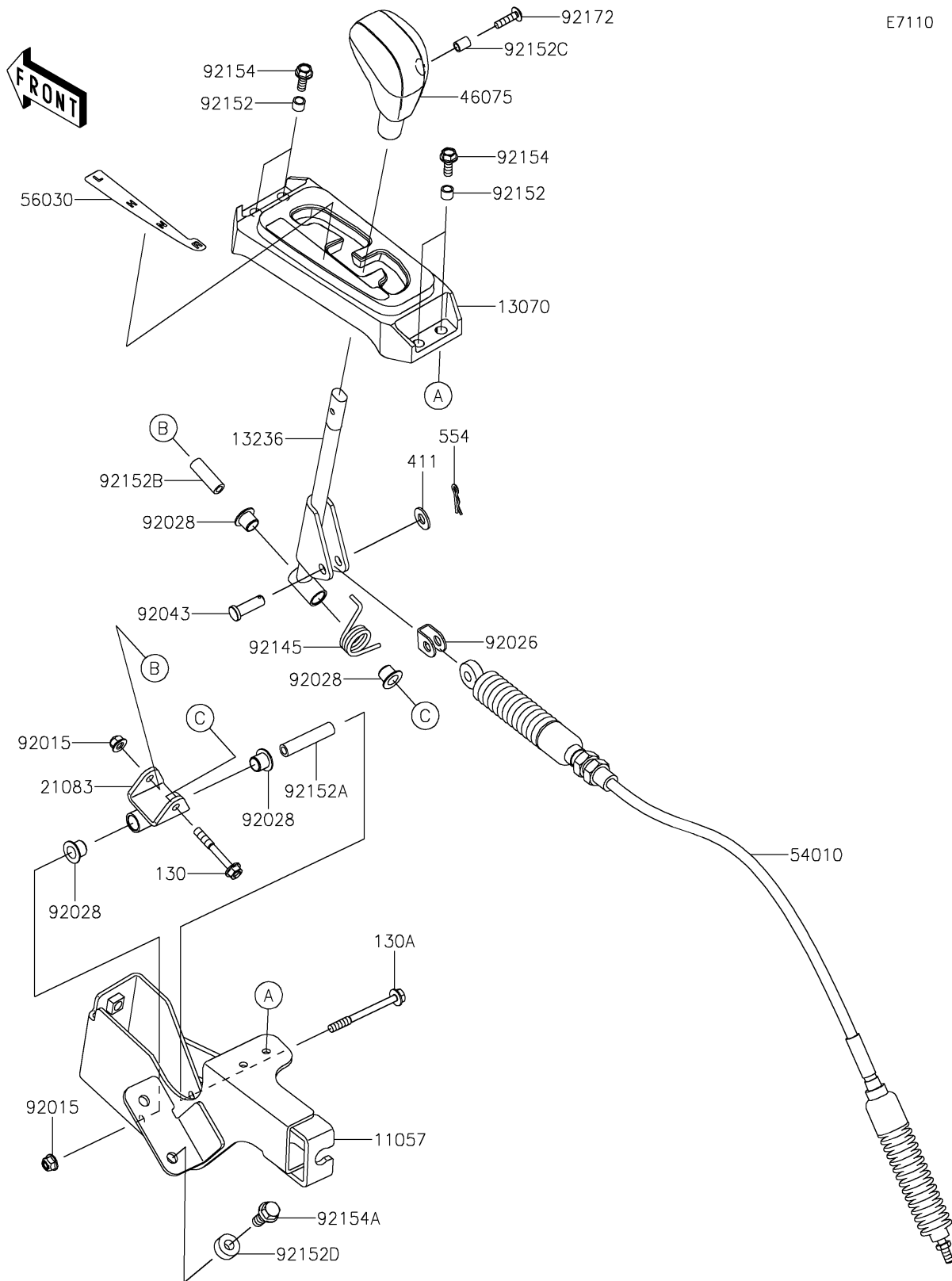


2022 Teryx[®] S

PARTS DIAGRAM

Control

E7110



2022 Teryx[®] S

PARTS LIST

Control

ITEM NAME	PART NUMBER	QUANTITY
BRACKET,SHIFT (Ref # 11057)	11057-1494	1
GUIDE,SHIFT GAUGE (Ref # 13070)	13070-0748	1
LEVER-COMP,SHIFT (Ref # 13236)	13236-0727	1
ARM (Ref # 21083)	21083-0710	1
GRIP (Ref # 46075)	46075-0569	1
CABLE,SHIFT (Ref # 54010)	54010-0619	1
LABEL,SHIFT POSITION (Ref # 56030)	56030-0849	1
NUT,LOCK,FLANGED,6MM (Ref # 92015)	92015-1675	2
SPACER (Ref # 92026)	92026-0074	1
BUSHING (Ref # 92028)	92028-1507	4
PIN (Ref # 92043)	92043-0053	1
SPRING (Ref # 92145)	92145-0832	1
COLLAR (Ref # 92152)	92152-1332	4
COLLAR,6.0X10X47 (Ref # 92152A)	92152-1517	1
COLLAR,6.0X10X30 (Ref # 92152B)	92152-1518	1
COLLAR,5.6X8X10.5 (Ref # 92152C)	92152-1545	1
COLLAR,8.2X18X8 (Ref # 92152D)	92152-1553	2
BOLT,FLANGED,6X16 (Ref # 92154)	92154-0887	4
BOLT,FLANGED,8X20 (Ref # 92154A)	92154-1104	2
SCREW,5X20 (Ref # 92172)	92172-2081	1
BOLT-FLANGED,6X45 (Ref # 130)	130CA0645	1
BOLT-FLANGED,6X65 (Ref # 130A)	130CA0665	1
WASHER-PLAIN,8MM (Ref # 411)	411AA0800	1
PIN-SNAP (Ref # 554)	554DA0800	1