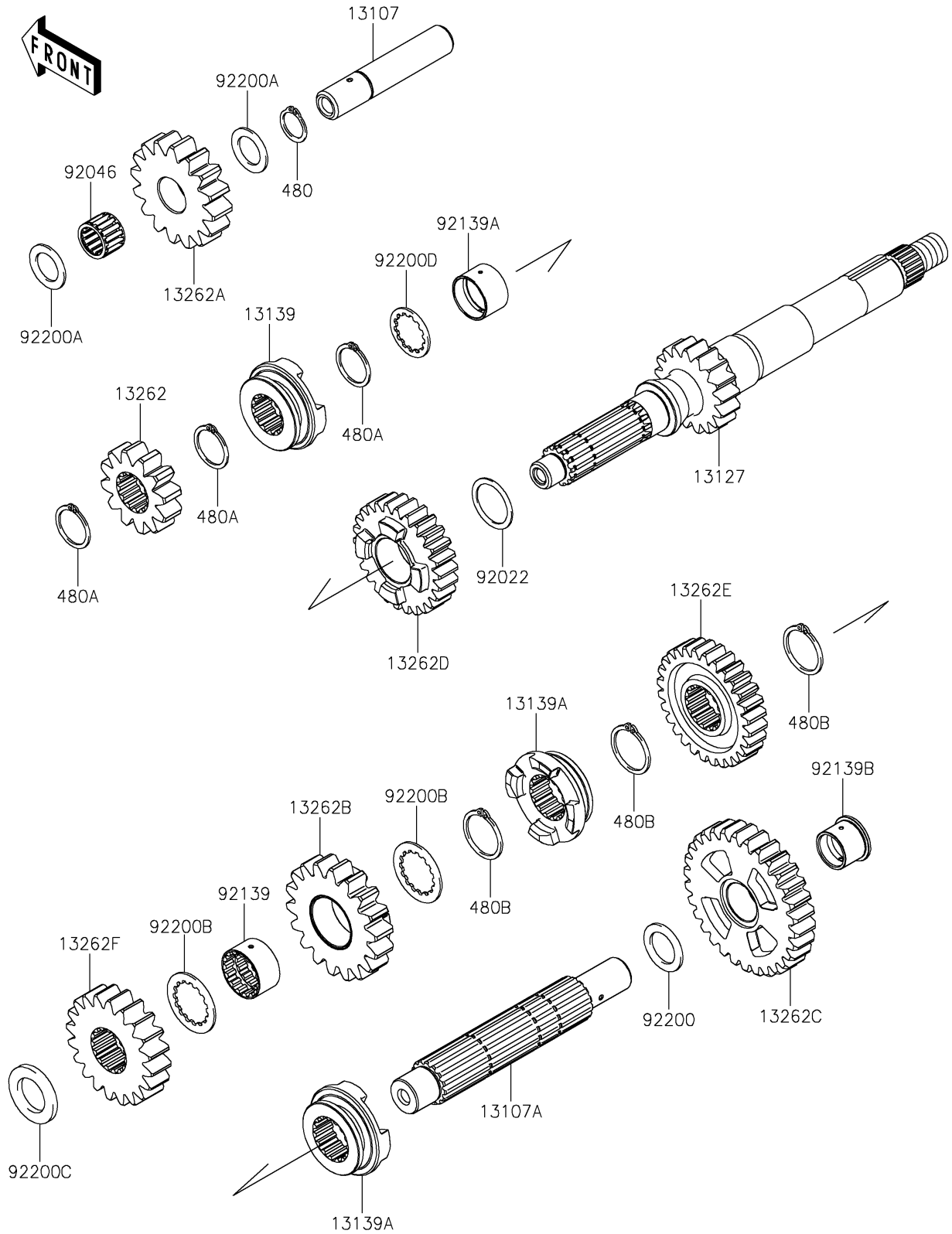


# 2022 Teryx<sup>®</sup> S

## PARTS DIAGRAM

### Transmission

E1361



# 2022 Teryx® S

## PARTS LIST

### Transmission

ITEM NAME	PART NUMBER	QUANTITY
SHAFT,REVERSE (Ref # 13107)	13107-0715	1
SHAFT,COUNTER (Ref # 13107A)	13107-0716	1
SHAFT-TRANSMISSION INPUT,17T (Ref # 13127)	13127-0654	1
SHIFTER,INPUT HI (Ref # 13139)	13139-0624	1
SHIFTER,OUTPUT (Ref # 13139A)	13139-0625	2
GEAR,INPUT REVERSE,12T (Ref # 13262)	13262-0861	1
GEAR,REVERSE IDLE,16T (Ref # 13262A)	13262-0862	1
GEAR,OUTPUT REVERSE,18T (Ref # 13262B)	13262-0865	1
GEAR,OUTPUT LOW,31T (Ref # 13262C)	13262-0867	1
GEAR,INPUT HI,26T (Ref # 13262D)	13262-1551	1
GEAR,OUTPUT HI,28T (Ref # 13262E)	13262-1552	1
GEAR,OUTPUT,19T (Ref # 13262F)	13262-1553	1
WASHER,25.3X32X1 (Ref # 92022)	92022-1800	1
BEARING-NEEDLE,182216E03 C3 (Ref # 92046)	92046-0605	1
BUSHING,25X28.3X16.7 (Ref # 92139)	92139-0107	1
BUSHING,25X28X17.8 (Ref # 92139A)	92139-0280	1
BUSHING,20X24X18.7 (Ref # 92139B)	92139-0707	1
WASHER,20.2X30X1.8 (Ref # 92200)	92200-0221	1
WASHER,18.2X28X1.5 (Ref # 92200A)	92200-0716	2
WASHER,28.5X38X1.5 (Ref # 92200B)	92200-0717	2
WASHER,22.2X36X3.6 (Ref # 92200C)	92200-0718	1
WASHER,25.2X31.0X1.5 (Ref # 92200D)	92200-1239	1
CIRCLIP-TYPE-C,18MM (Ref # 480)	480J1800	1
CIRCLIP-TYPE-C,24MM (Ref # 480A)	480J2400	3
CIRCLIP-TYPE-C,28MM (Ref # 480B)	480J2800	3