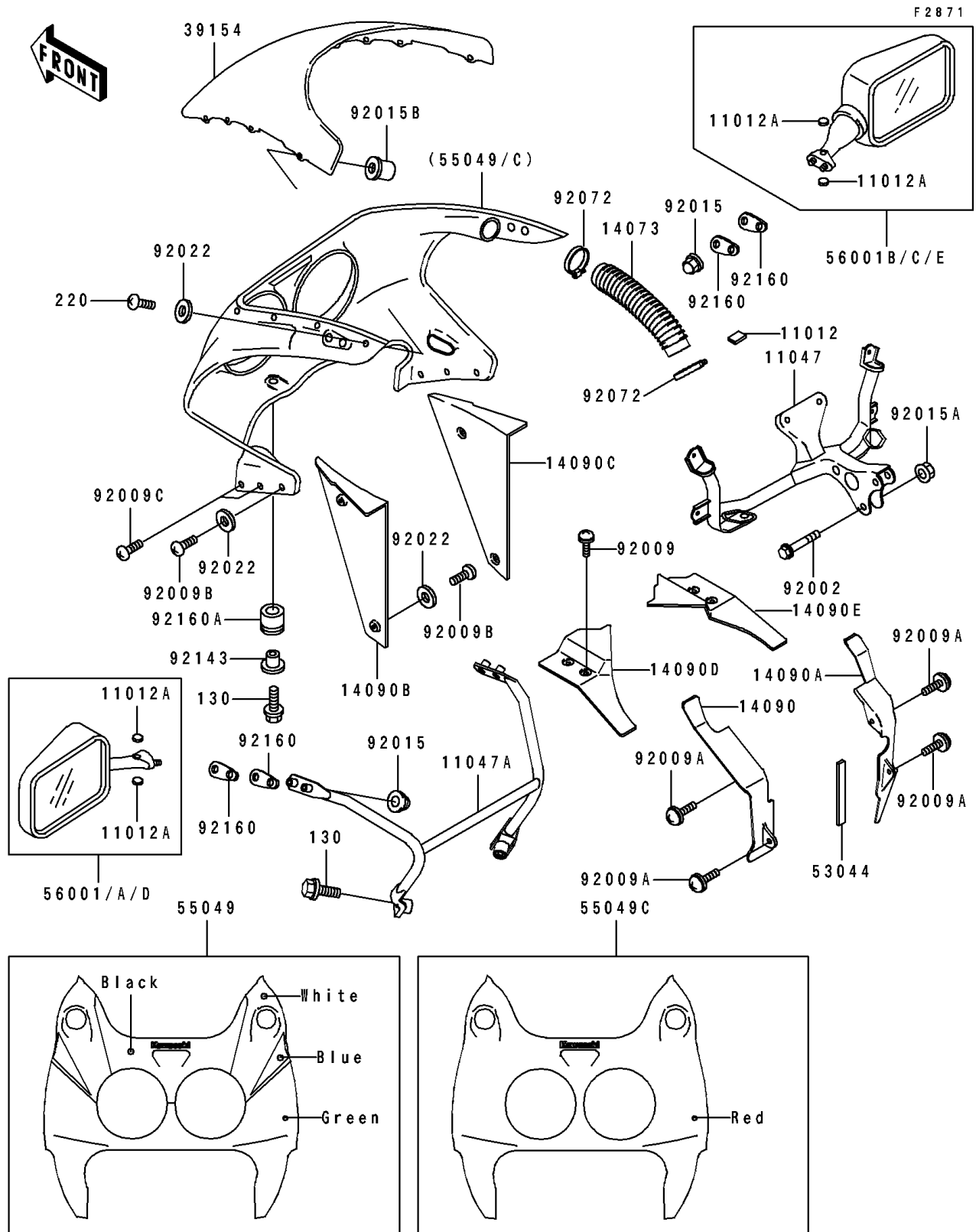


1991 Ninja[®] ZX[™]-7

PARTS DIAGRAM

Cowling



1991 Ninja® ZX™-7

PARTS LIST

Cowling

| ITEM NAME | PART NUMBER | QUANTITY |
|---|---------------|----------|
| CAP (Ref # 11012) | 11012-1725 | 4 |
| CAP,MIRROR (Ref # 11012A) | 11012-1818 | 4 |
| BRACKET,UPP COWLING (Ref # 11047) | 11047-1270 | 1 |
| BRACKET,MIRROR,BLACK (Ref # 11047A) | 11047-1271-10 | 1 |
| DUCT,AIR INTAKE (Ref # 14073) | 14073-1463 | 2 |
| COVER,INNER COWLING,LH (Ref # 14090) | 14090-1060 | 1 |
| COVER,INNER COWLING,RH (Ref # 14090A) | 14090-1061 | 1 |
| COVER,RADIATOR,LH (Ref # 14090B) | 14090-1090 | 1 |
| COVER,RADIATOR,RH (Ref # 14090C) | 14090-1091 | 1 |
| COVER,INNER COWLING,LH (Ref # 14090D) | 14090-1094 | 1 |
| COVER,INNER COWLING,RH (Ref # 14090E) | 14090-1095 | 1 |
| WINDSHIELD (Ref # 39154) | 39154-1116 | 1 |
| TRIM,L=150 (Ref # 53044) | 53044-1248 | 1 |
| COWLING.,UPP,GREEN/WHITE (Ref # 55049) | 55049-5018-CK | 1 |
| MIRROR-ASSY,LH,P.WHITE (Ref # 56001D) | 56001-1379-6F | 1 |
| MIRROR-ASSY,RH,P.WHITE (Ref # 56001E) | 56001-1380-6F | 1 |
| BOLT,8X35 (Ref # 92002) | 92002-1198 | 2 |
| SCREW,6X10 (Ref # 92009) | 92009-1402 | 4 |
| SCREW,6X14 (Ref # 92009A) | 92009-1555 | 4 |
| SCREW,5X16 (Ref # 92009B) | 92009-1654 | 6 |
| SCREW,5X20 (Ref # 92009C) | 92009-1656 | 4 |
| NUT,CAP,6MM,BLACK (Ref # 92015) | 92015-1170 | 4 |
| NUT,CAP,8MM,BLACK (Ref # 92015A) | 92015-1174 | 2 |
| NUT,WELL,5MM (Ref # 92015B) | 92015-1757 | 10 |
| WASHER,NYLON,5.3X11.5X1.5 (Ref # 92022) | 92022-1521 | 16 |
| BAND,RESERVOIR TANK (Ref # 92072) | 92072-1091 | 4 |
| COLLAR (Ref # 92143) | 92143-1026 | 2 |
| DAMPER,MIRROR (Ref # 92160) | 92160-1089 | 4 |
| DAMPER (Ref # 92160A) | 92160-1141 | 2 |

1991 Ninja® ZX™-7

PARTS LIST

Cowling

| ITEM NAME | PART NUMBER | QUANTITY |
|-------------------------------------|-------------|----------|
| BOLT-FLANGED,6X16,BLACK (Ref # 130) | 130J0616 | 4 |
| SCREW-PAN-CROS (Ref # 220) | 220C0516 | 10 |