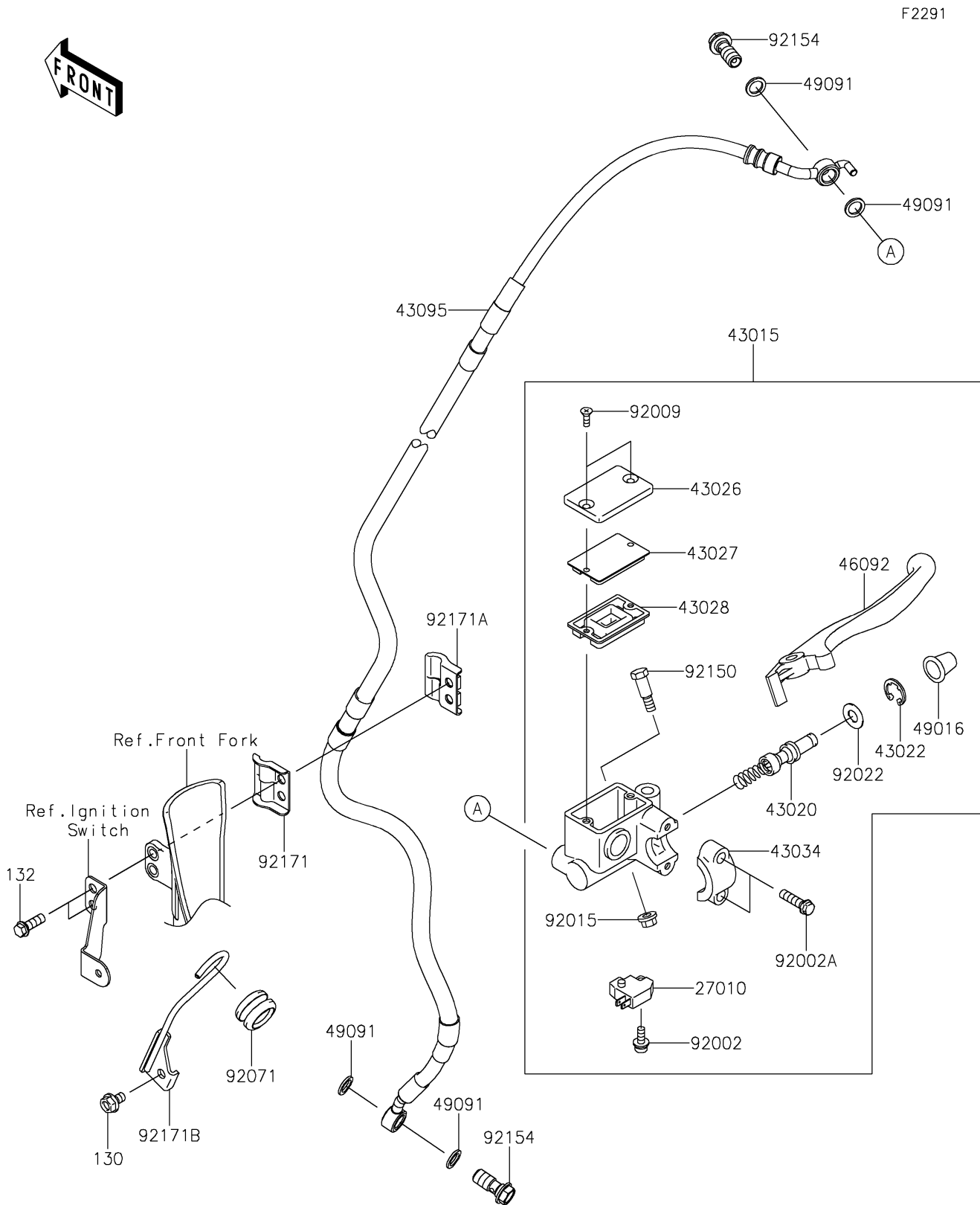


# 2024 KLX<sup>®</sup> 300

## PARTS DIAGRAM

### Front Master Cylinder



# 2024 KLX® 300

## PARTS LIST

### Front Master Cylinder

| ITEM NAME                                  | PART NUMBER | QUANTITY |
|--|-------------|----------|
| SWITCH,BRAKE (Ref # 27010)                 | 27010-0762  | 1        |
| CYLINDER-ASSY-MASTER,FR (Ref # 43015)      | 43015-0771  | 1        |
| PISTON-COMP-BRAKE (Ref # 43020)            | 43020-1126  | 1        |
| STOPPER-BRAKE,PISTON (Ref # 43022)         | 43022-1010  | 1        |
| CAP-BRAKE (Ref # 43026)                    | 43026-1082  | 1        |
| PLATE-DIAPHRAGM (Ref # 43027)              | 43027-1057  | 1        |
| DIAPHRAGM (Ref # 43028)                    | 43028-1061  | 1        |
| HOLDER-BRAKE,MASTER CYLINDER (Ref # 43034) | 43034-1016  | 1        |
| HOSE-BRAKE,FR (Ref # 43095)                | 43095-1930  | 1        |
| LEVER-GRIP,FRONT BRAKE (Ref # 46092)       | 46092-1140  | 1        |
| COVER-SEAL,MASTER CYLINDER (Ref # 49016)   | 49016-1044  | 1        |
| WASHER-SEAL,10.1X14.5X1.5 (Ref # 49091)    | 49091-0001  | 4        |
| BOLT,SCREW,4X12 (Ref # 92002)              | 92002-1323  | 1        |
| BOLT (Ref # 92002A)                        | 92002-1894  | 2        |
| SCREW,4MM (Ref # 92009)                    | 92009-1458  | 2        |
| NUT,FLANGED,6MM (Ref # 92015)              | 92015-1528  | 1        |
| WASHER (Ref # 92022)                       | 92022-1814  | 1        |
| GROMMET,15X20X16 (Ref # 92071)             | 92071-0056  | 1        |
| BOLT,LEVER SET (Ref # 92150)               | 92150-1451  | 1        |
| BOLT,FLANGED,10X23 (Ref # 92154)           | 92154-0732  | 2        |
| CLAMP,BRAKE HOSE (Ref # 92171)             | 92171-1626  | 1        |
| CLAMP,BRAKE HOSE (Ref # 92171A)            | 92171-1627  | 1        |
| CLAMP,BRAKE HOSE (Ref # 92171B)            | 92171-1839  | 1        |
| BOLT-FLANGED,6X10 (Ref # 130)              | 130BB0610   | 1        |
| BOLT-FLANGED-SMALL,6X18 (Ref # 132)        | 132BB0618   | 2        |