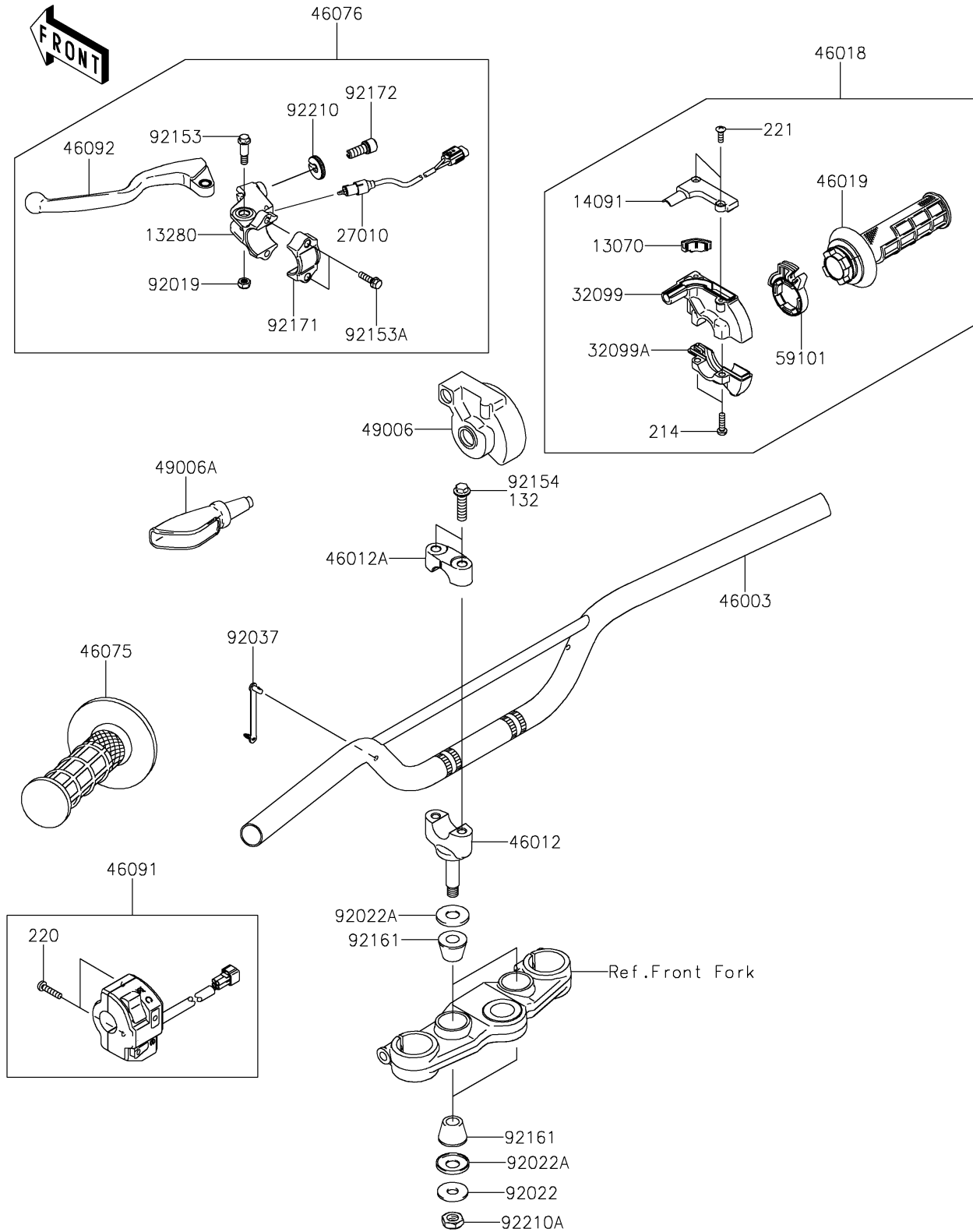


2023 KLX[®]140R

PARTS DIAGRAM

Handlebar

F2310



2023 KLX®140R

PARTS LIST

Handlebar

| ITEM NAME | PART NUMBER | QUANTITY |
|---|----------------|----------|
| GUIDE,THROTTLE (Ref # 13070) | 13070-0083 | 1 |
| HOLDER,CLUTCH LEVER (Ref # 13280) | 13280-0256 | 1 |
| COVER,THROTTLE CASE,UPP (Ref # 14091) | 14091-0873 | 1 |
| SWITCH,CLUTCH (Ref # 27010) | 27010-0071 | 1 |
| CASE,THROTTLE,UPP (Ref # 32099) | 32099-0037 | 1 |
| CASE,THROTTLE,LWR (Ref # 32099A) | 32099-0038 | 1 |
| HANDLE,P.SILVER (Ref # 46003) | 46003-0205-458 | 1 |
| HOLDER-HANDLE,LWR,P.SILVER (Ref # 46012) | 46012-0013-458 | 2 |
| HOLDER-HANDLE,UPP,P.SILVER (Ref # 46012A) | 46012-0023-458 | 2 |
| GRIP-ASSY-THROTTLE (Ref # 46018) | 46018-0073 | 1 |
| GRIP-ASSY,THROTTLE (Ref # 46019) | 46019-0023 | 1 |
| GRIP,LH (Ref # 46075) | 46075-0072 | 1 |
| LEVER-ASSY-GRIP,CLUTCH (Ref # 46076) | 46076-0049 | 1 |
| HOUSING-ASSY-CONTROL,LH (Ref # 46091) | 46091-0226 | 1 |
| LEVER-GRIP,CLUTCH (Ref # 46092) | 46092-0026 | 1 |
| BOOT,THROTTLE CASE (Ref # 49006) | 49006-0075 | 1 |
| BOOT,LEVER HOLDER (Ref # 49006A) | 49006-0080 | 1 |
| REEL,THROTTLE (Ref # 59101) | 59101-0005 | 1 |
| NUT,LOCK,6MM (Ref # 92019) | 92019-008 | 1 |
| WASHER,10.2X28X2 (Ref # 92022) | 92022-1088 | 2 |
| WASHER (Ref # 92022A) | 92022-1737 | 4 |
| CLAMP,SPEED,L=58 (Ref # 92037) | 92037-1163 | 1 |
| BOLT,6MM (Ref # 92153) | 92153-1897 | 1 |
| BOLT,5X20 (Ref # 92153A) | 92153-1898 | 2 |
| DAMPER,HANDLE HOLDER (Ref # 92161) | 92161-0632 | 4 |
| CLAMP,LEVER HOLDER (Ref # 92171) | 92171-1671 | 1 |
| SCREW,CABLE ADJUST,8MM (Ref # 92172) | 92172-0330 | 1 |
| NUT,CABLE ADJUST (Ref # 92210) | 92210-0411 | 1 |
| NUT,LOCK,10MM (Ref # 92210A) | 92210-1672 | 2 |

2023 KLX[®]140R

PARTS LIST

Handlebar

| ITEM NAME | PART NUMBER | QUANTITY |
|-------------------------------------|-------------|----------|
| BOLT-FLANGED-SMALL,8X30 (Ref # 132) | 132BC0830 | 4 |
| SCREW-PAN+-,5X18 (Ref # 214) | 214AB0518 | 2 |
| SCREW-PAN-CROS,5X22 (Ref # 220) | 220AB0522 | 2 |
| SCREW-CSK-CROS,4X12 (Ref # 221) | 221AB0412 | 2 |