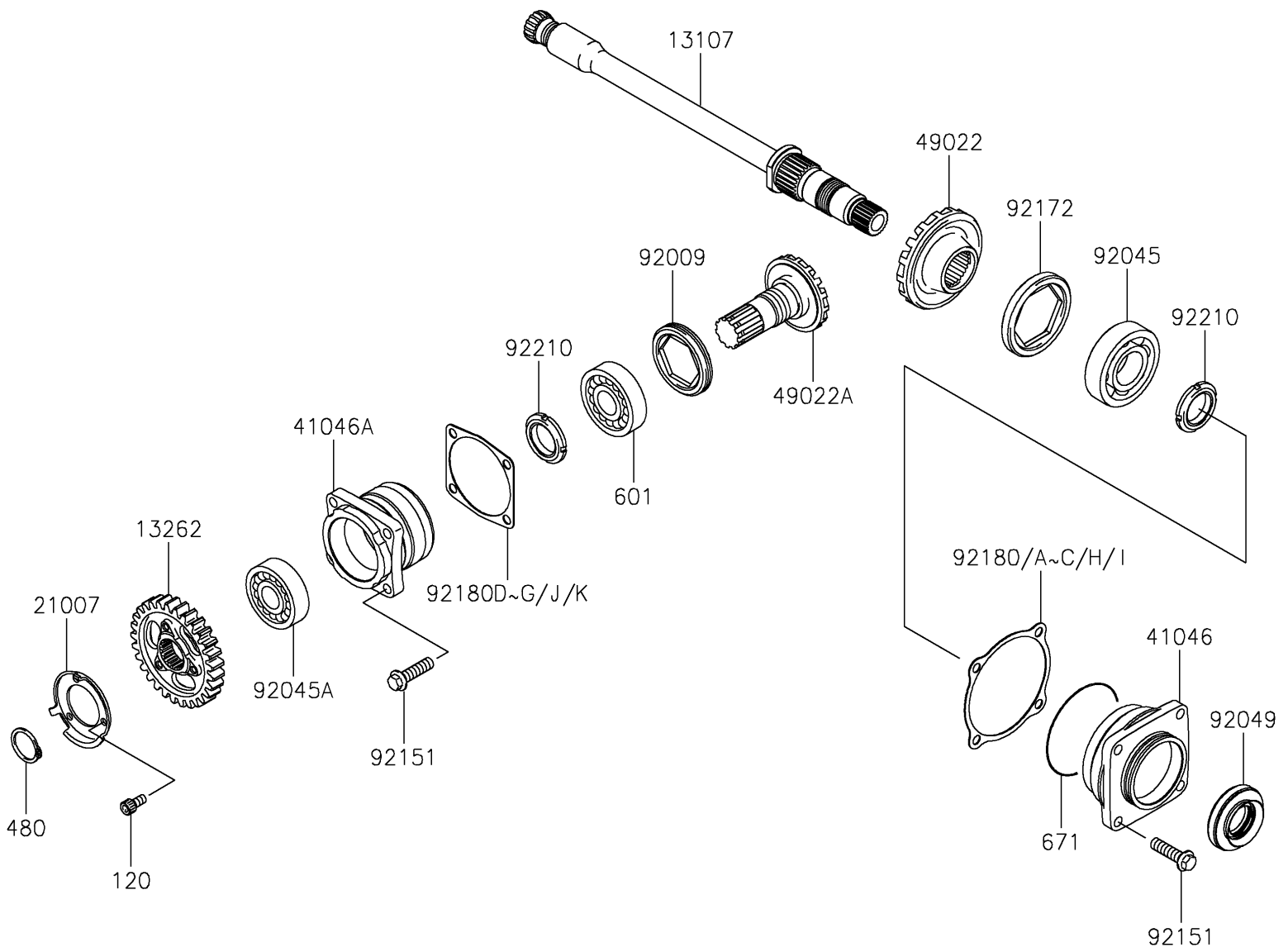


# 2024 BRUTE FORCE® 750 LE EPS CAMO

## PARTS DIAGRAM

### Front Bevel Gear

E3131



# 2024 BRUTE FORCE® 750 LE EPS CAMO

**Kawasaki**  
Let the Good Times Roll®

## PARTS LIST

### Front Bevel Gear

ITEM NAME	PART NUMBER	QUANTITY
SHAFT,F/R OUTPUT (Ref # 13107)	13107-0727	1
GEAR,OUTPUT,29T (Ref # 13262)	13262-0960	1
ROTOR,REVERSE SENSOR (Ref # 21007)	21007-1416	1
HOUSING-BEARING (Ref # 41046)	41046-0025	1
HOUSING-BEARING (Ref # 41046A)	41046-1101	1
GEAR-BEVEL,DRIVEN,20T (Ref # 49022)	49022-0011	1
GEAR-BEVEL,DRIVE,12T (Ref # 49022A)	49022-1192	1
SCREW,64MM (Ref # 92009)	92009-1914	1
BEARING-BALL,6306SH2 (Ref # 92045)	92045-1190	1
BEARING-BALL,62/28 (Ref # 92045A)	92045-1207	1
SEAL-OIL (Ref # 92049)	92049-0160	1
BOLT-FLANGED-SMALL,8X30 (Ref # 92151)	92151-1688	8
SCREW,SET,75X10 (Ref # 92172)	92172-0371	1
SHIM,DRIVEN,T=0.15 (Ref # 92180)	92180-1307	AR
SHIM,DRIVEN,T=0.20 (Ref # 92180A)	92180-1308	AR
SHIM,DRIVEN,T=0.50 (Ref # 92180B)	92180-1309	AR
SHIM,DRIVEN,T=0.80 (Ref # 92180C)	92180-1310	AR
SHIM,DRIVE,T=0.15 (Ref # 92180D)	92180-1311	AR
SHIM,DRIVE,T=0.20 (Ref # 92180E)	92180-1312	AR
SHIM,DRIVE,T=0.50 (Ref # 92180F)	92180-1313	AR
SHIM,DRIVE,T=0.80 (Ref # 92180G)	92180-1314	AR
SHIM,DRIVEN,T=1.00 (Ref # 92180H)	92180-1349	AR
SHIM,DRIVEN,T=1.20 (Ref # 92180I)	92180-1350	AR
SHIM,DRIVE,T=1.00 (Ref # 92180J)	92180-1351	AR
SHIM,DRIVE,T=1.20 (Ref # 92180K)	92180-1352	AR
NUT,30MM (Ref # 92210)	92210-1294	2
BOLT-SOCKET,6X12 (Ref # 120)	120CA0612	3
CIRCLIP-TYPE-C,28MM (Ref # 480)	480J2800	1
BEARING-BALL,#6206C3 (Ref # 601)	601B6206	1

# 2024 BRUTE FORCE® 750 LE EPS CAMO

**Kawasaki**  
Let the Good Times Roll®

## PARTS LIST

### Front Bevel Gear

ITEM NAME	PART NUMBER	QUANTITY
O RING (Ref # 671)	671D2585	1