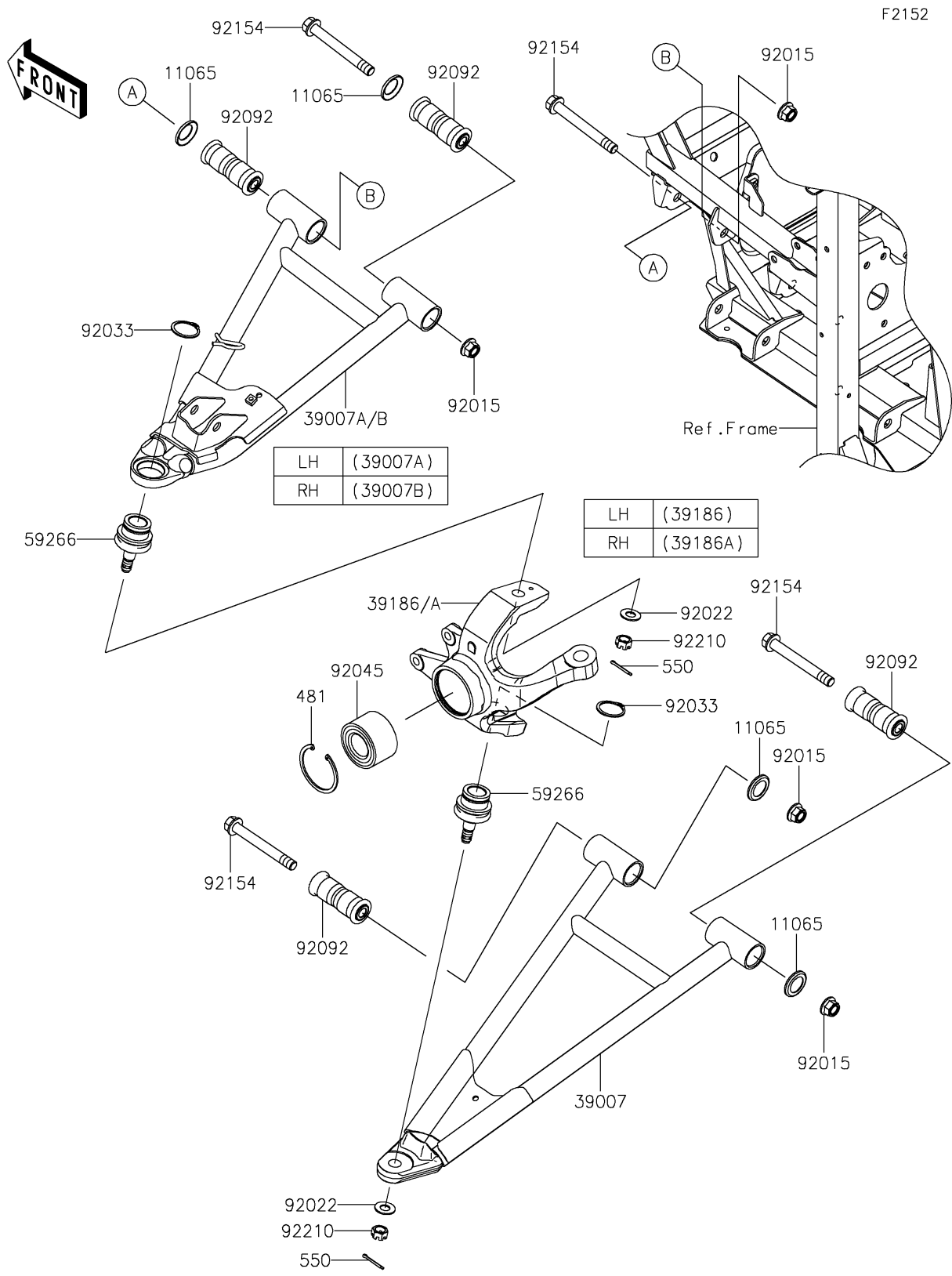


2024 MULE PRO-FXT™ 1000 PLATINUM RANCH EDITION

PARTS DIAGRAM Front Suspension



2024 MULE PRO-FXT™ 1000 PLATINUM RANCH EDITION



PARTS LIST

Front Suspension

| ITEM NAME | PART NUMBER | QUANTITY |
|---|---------------|----------|
| CAP,ARM (Ref # 11065) | 11065-0838 | 8 |
| ARM-SUSP,FR,LWR,LH&RH (Ref # 39007) | 39007-0383 | 2 |
| ARM-SUSP,FR,UPP,LH,BLACK (Ref # 39007A) | 39007-0499-10 | 1 |
| ARM-SUSP,FR,UPP,RH,BLACK (Ref # 39007B) | 39007-0500-10 | 1 |
| KNUCKLE,FR,LH (Ref # 39186) | 39186-0339 | 1 |
| KNUCKLE,FR,RH (Ref # 39186A) | 39186-0340 | 1 |
| JOINT-BALL (Ref # 59266) | 59266-0711 | 4 |
| NUT,LOCK,FLANGED,12MM (Ref # 92015) | 92015-1433 | 8 |
| WASHER (Ref # 92022) | 92022-1831 | 4 |
| RING-SNAP,C-TYPE,32MM (Ref # 92033) | 92033-1262 | 4 |
| BEARING-BALL,30X60X37 (Ref # 92045) | 92045-0905 | 2 |
| BUSHING-RUBBER,12X20X78 (Ref # 92092) | 92092-0028 | 8 |
| BOLT,FLANGED,12X100 (Ref # 92154) | 92154-1318 | 8 |
| NUT,CASTLE,12MM (Ref # 92210) | 92210-0395 | 4 |
| CIRCLIP-TYPE-C (Ref # 481) | 481J6000 | 2 |
| PIN-COTTER,3.0X25 (Ref # 550) | 550AA3025 | 4 |