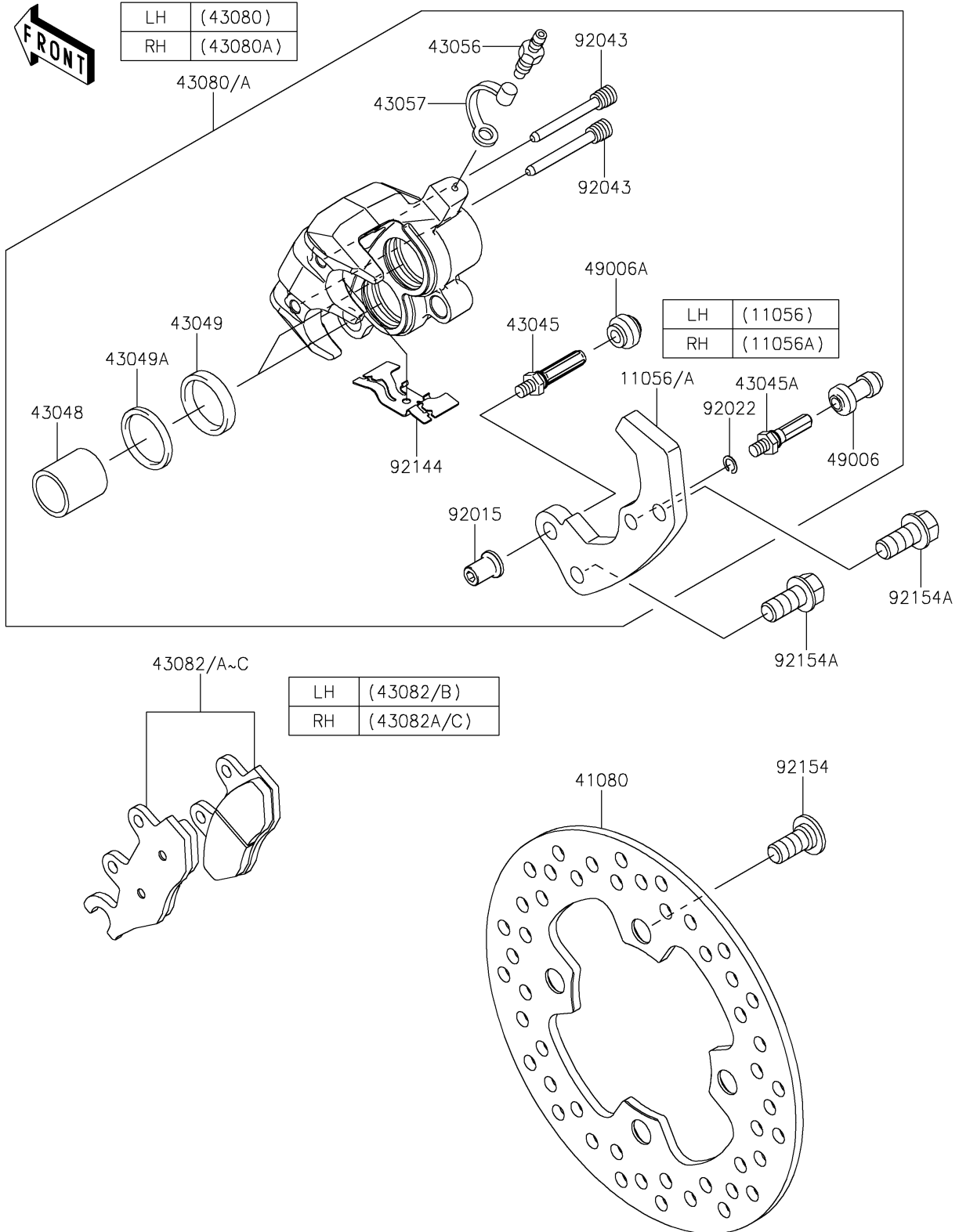


# 2024 MULE PRO-FX™ 1000 HD EDITION

## PARTS DIAGRAM

### Front Brake

F2292



# 2024 MULE PRO-FX™ 1000 HD EDITION

**Kawasaki**  
Let the Good Times Roll®

## PARTS LIST

### Front Brake

| ITEM NAME                             | PART NUMBER | QUANTITY |
|---------------------------------------|-------------|----------|
| BRACKET,LH (Ref # 11056)              | 11056-3807  | 1        |
| BRACKET,RH (Ref # 11056A)             | 11056-3829  | 1        |
| DISC (Ref # 41080)                    | 41080-0608  | 2        |
| SHAFT-CALIPER (Ref # 43045)           | 43045-0011  | 2        |
| SHAFT-CALIPER (Ref # 43045A)          | 43045-1010  | 2        |
| PISTON-CALIPER (Ref # 43048)          | 43048-1068  | 4        |
| PACKING,PISTON SEAL (Ref # 43049)     | 43049-1060  | 4        |
| PACKING,PISTON SEAL (Ref # 43049A)    | 43049-1061  | 4        |
| BREATHER (Ref # 43056)                | 43056-1055  | 2        |
| CAP-BREATHER (Ref # 43057)            | 43057-1001  | 2        |
| CALIPER-SUB-ASSY,FR,LH (Ref # 43080)  | 43080-0138  | 1        |
| CALIPER-SUB-ASSY,FR,RH (Ref # 43080A) | 43080-0139  | 1        |
| PAD-ASSY-BRAKE,FR,LH (Ref # 43082)    | 43082-0138  | 1        |
| PAD-ASSY-BRAKE,FR,RH (Ref # 43082A)   | 43082-0146  | 1        |
| PAD-ASSY-BRAKE,FR,LH (Ref # 43082B)   | 43082-0216  | 1        |
| PAD-ASSY-BRAKE,FR,RH (Ref # 43082C)   | 43082-0217  | 1        |
| BOOT,CALIPER (Ref # 49006)            | 49006-1088  | 2        |
| BOOT,CALIPER (Ref # 49006A)           | 49006-1242  | 2        |
| NUT (Ref # 92015)                     | 92015-1740  | 2        |
| WASHER,WAVE (Ref # 92022)             | 92022-1373  | 2        |
| PIN,HANGER (Ref # 92043)              | 92043-1416  | 4        |
| SPRING,PAD (Ref # 92144)              | 92144-1847  | 2        |
| BOLT,SOCKET,10X23 (Ref # 92154)       | 92154-0713  | 8        |
| BOLT,FLANGED,10X22 (Ref # 92154A)     | 92154-1327  | 4        |