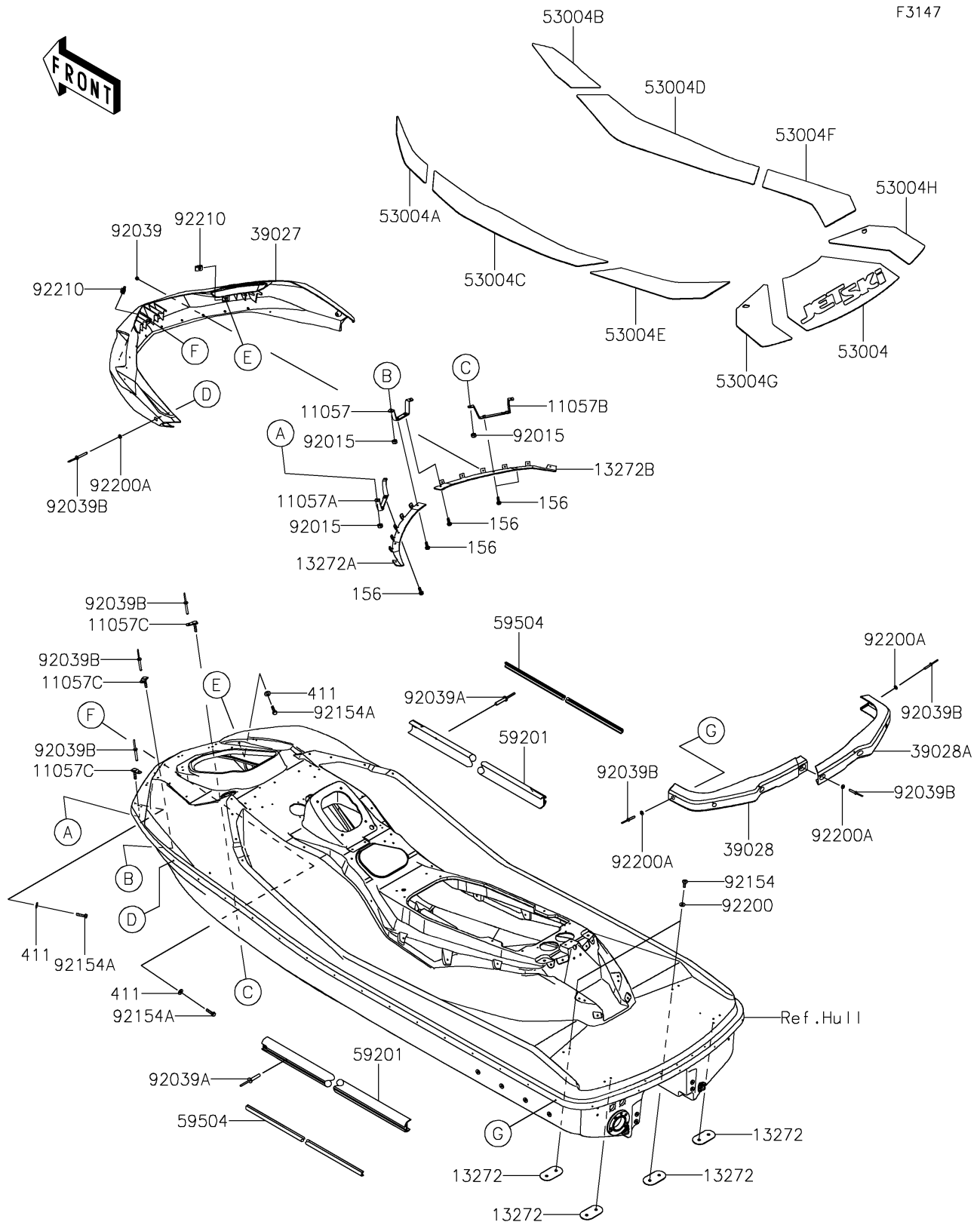


2025 Ultra310X

PARTS DIAGRAM

Pads



2025 Ultra310X

PARTS LIST

Pads

ITEM NAME	PART NUMBER	QUANTITY
BRACKET,FR BUMPER,CNT (Ref # 11057)	11057-7809	1
BRACKET,FR BUMPER,LH (Ref # 11057A)	11057-7810	1
BRACKET,FR BUMPER,RH (Ref # 11057B)	11057-7811	1
BRACKET,FR (Ref # 11057C)	11057-7812	6
PLATE,GUIDE (Ref # 13272)	13272-3849	4
PLATE,FR BUMPER,LH (Ref # 13272A)	13272-3984	1
PLATE,FR BUMPER,RH (Ref # 13272B)	13272-3985	1
BUMPER-FRONT,BLACK (Ref # 39027)	39027-0005-6Z	1
BUMPER-REAR,LH,BLACK (Ref # 39028)	39028-0008-6Z	1
BUMPER-REAR,RH,BLACK (Ref # 39028A)	39028-0009-6Z	1
MAT,DECK,CNT (Ref # 53004)	53004-0686	1
MAT,FLOOR,FR,LH (Ref # 53004A)	53004-0695	1
MAT,FLOOR,FR,RH (Ref # 53004B)	53004-0696	1
MAT,FLOOR,MIDDLE,LH (Ref # 53004C)	53004-0697	1
MAT,FLOOR,MIDDLE,RH (Ref # 53004D)	53004-0698	1
MAT,FLOOR,RR,LH (Ref # 53004E)	53004-0699	1
MAT,FLOOR,RR,RH (Ref # 53004F)	53004-0700	1
MAT,DECK,LH (Ref # 53004G)	53004-0701	1
MAT,DECK,RH (Ref # 53004H)	53004-0702	1
BUMPER,SIDE,BLACK (Ref # 59201)	59201-0009-6Z	2
INSERT-BOAT FENDER,SIDE,N.RED (Ref # 59504)	59504-0003-72V	2
NUT,LOCK,6MM (Ref # 92015)	92015-3766	6
RIVET (Ref # 92039)	92039-3733	12
RIVET (Ref # 92039A)	92039-3771	26
RIVET (Ref # 92039B)	92039-3773	15
BOLT,SOCKET,6X20 (Ref # 92154)	92154-0918	2
BOLT,FLANGED,6X28 (Ref # 92154A)	92154-4484	3
WASHER,6.5X16X1.0 (Ref # 92200)	92200-3712	2
WASHER,5X12X1 (Ref # 92200A)	92200-3796	9

2025 Ultra310X

PARTS LIST

Pads

ITEM NAME	PART NUMBER	QUANTITY
NUT,6MM (Ref # 92210)	92210-3768	2
BOLT-WP,6X18 (Ref # 156)	156R0618	6
WASHER-PLAIN,6MM (Ref # 411)	411S0600	3