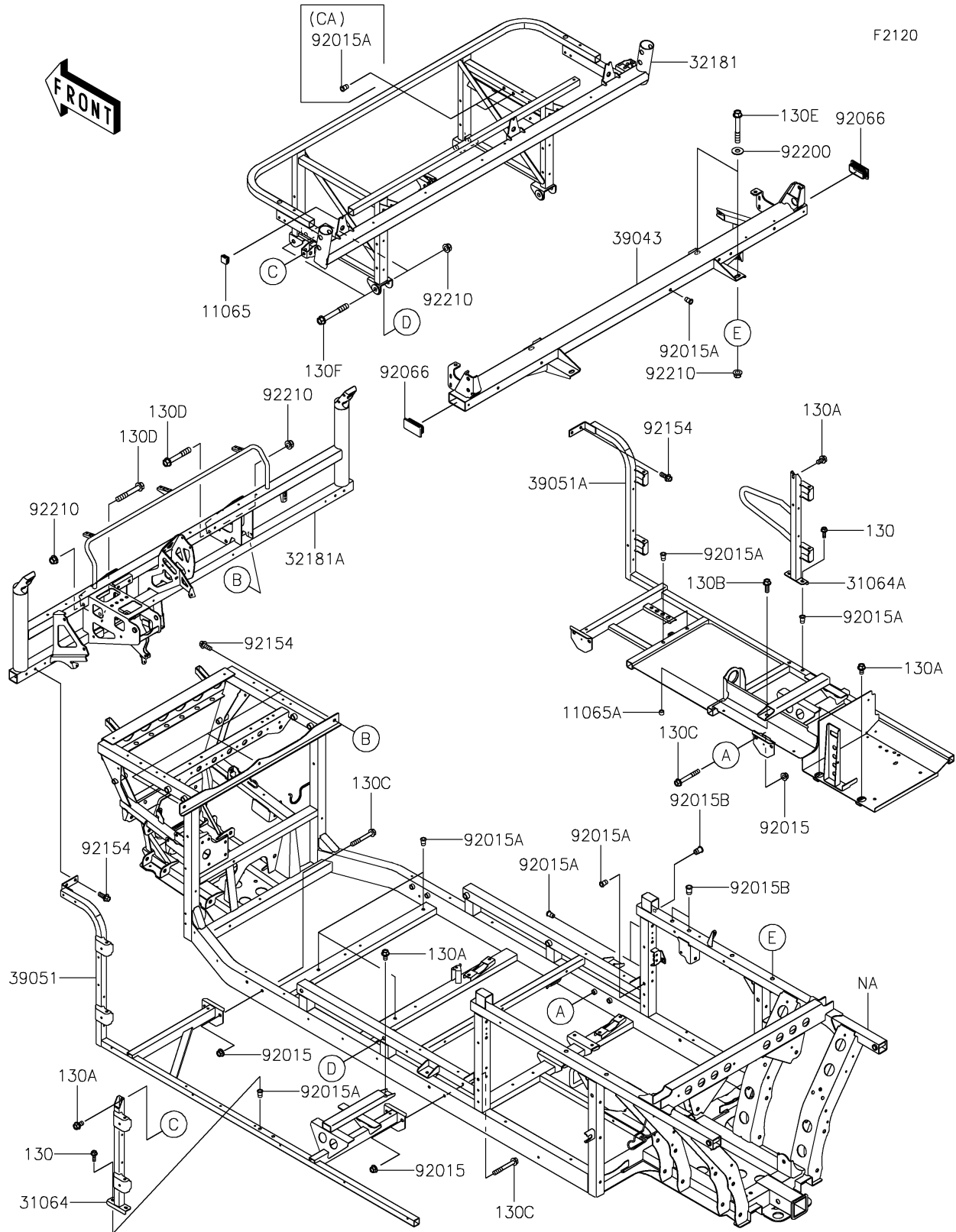


2025 MULE PRO-FXT 1000 LE Ranch Edition

PARTS DIAGRAM

Frame



2025 MULE PRO-FXT 1000 LE Ranch Edition

PARTS LIST

Frame

| ITEM NAME | PART NUMBER | QUANTITY |
|---|-------------|----------|
| CAP (Ref # 11065) | 11065-0901 | 1 |
| CAP (Ref # 11065A) | 11065-7504 | 1 |
| PIPE-COMP,RR DOOR HINGE,LH (Ref # 31064) | 31064-0704 | 1 |
| PIPE-COMP,RR DOOR HINGE,RH (Ref # 31064A) | 31064-0705 | 1 |
| FRAME-SUB-COMP,SEAT (Ref # 32181) | 32181-0047 | 1 |
| FRAME-SUB-COMP,DASH PANEL (Ref # 32181A) | 32181-0048 | 1 |
| CROSSMEMBER-COMP,C PILLAR (Ref # 39043) | 39043-0039 | 1 |
| FRAME-COMP-SIDE,LH (Ref # 39051) | 39051-0011 | 1 |
| FRAME-COMP-SIDE,RH (Ref # 39051A) | 39051-0013 | 1 |
| NUT,8MM (Ref # 92015) | 92015-1432 | 8 |
| NUT,POP,6MM,L=15 (Ref # 92015A) | 92015-1791 | 15 |
| NUT,POP,8MM,L=16.5 (Ref # 92015B) | 92015-1793 | 3 |
| PLUG (Ref # 92066) | 92066-7505 | 2 |
| BOLT,FLANGED,8X20 (Ref # 92154) | 92154-1226 | 7 |
| WASHER,10.5X25X1.6 (Ref # 92200) | 92200-1595 | 4 |
| NUT,LOCK,FLANGED,10MM (Ref # 92210) | 92210-0276 | 12 |
| BOLT-FLANGED,6X18 (Ref # 130) | 130BA0618 | 4 |
| BOLT-FLANGED,8X14 (Ref # 130A) | 130BA0814 | 5 |
| BOLT-FLANGED,8X22 (Ref # 130B) | 130BA0822 | 1 |
| BOLT-FLANGED,8X60 (Ref # 130C) | 130BA0860 | 8 |
| BOLT-FLANGED,10X65 (Ref # 130D) | 130BA1065 | 4 |
| BOLT-FLANGED,10X70 (Ref # 130E) | 130BA1070 | 4 |
| BOLT-FLANGED,10X75 (Ref # 130F) | 130CA1075 | 4 |
| NUT,POP,6MM,L=15 (Ref # 92015A) | 92015-1791 | 13 |