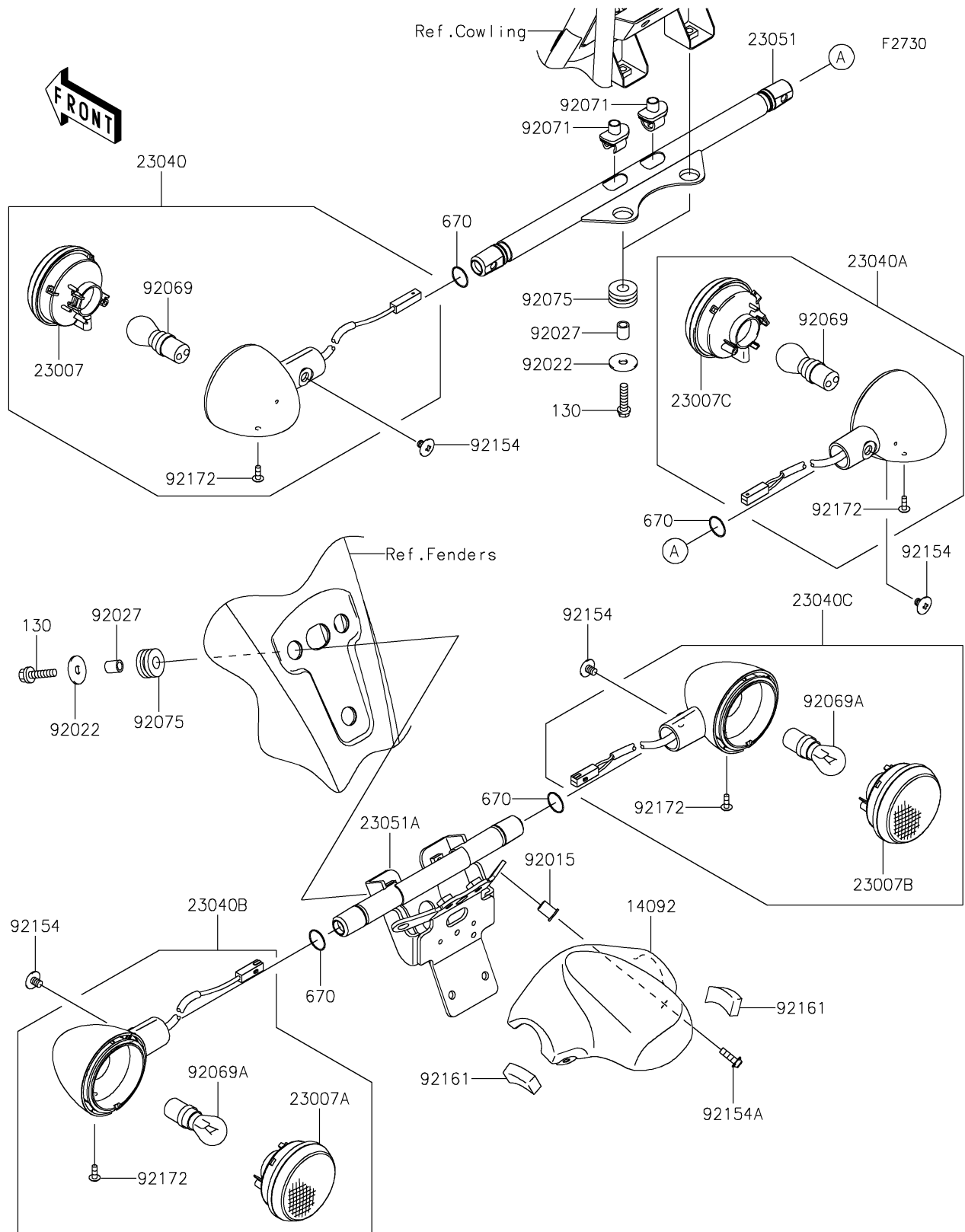


2022 Vulcan® 1700 Voyager ABS

PARTS DIAGRAM

Turn Signals



2022 Vulcan® 1700 Voyager ABS

PARTS LIST

Turn Signals

| ITEM NAME | PART NUMBER | QUANTITY |
|---------------------------------------|-------------|----------|
| COVER,LICENSE LAMP (Ref # 14092) | 14092-0090 | 1 |
| LENS-COMP,SIGNAL LAMP (Ref # 23007) | 23007-0119 | 1 |
| LENS-COMP,SIGNAL LAMP (Ref # 23007A) | 23007-0123 | 1 |
| LENS-COMP,SIGNAL LAMP (Ref # 23007B) | 23007-0124 | 1 |
| LENS-COMP,SIGNAL LAMP (Ref # 23007C) | 23007-0128 | 1 |
| LAMP-SIGNAL,FR,LH (Ref # 23040) | 23040-0081 | 1 |
| LAMP-SIGNAL,FR,RH (Ref # 23040A) | 23040-0082 | 1 |
| LAMP-SIGNAL,RR,LH (Ref # 23040B) | 23040-0087 | 1 |
| LAMP-SIGNAL,RR,RH (Ref # 23040C) | 23040-0088 | 1 |
| BRACKET-SIGNAL LAMP,FR (Ref # 23051) | 23051-0036 | 1 |
| BRACKET-SIGNAL LAMP,RR (Ref # 23051A) | 23051-0038 | 1 |
| NUT,WELL,5MM (Ref # 92015) | 92015-1757 | 2 |
| WASHER,7X24X1.6 (Ref # 92022) | 92022-1160 | 5 |
| COLLAR,6.8X10X12 (Ref # 92027) | 92027-162 | 5 |
| BULB,12V 21/5W (Ref # 92069) | 92069-063 | 2 |
| BULB,12V 21W (Ref # 92069A) | | 2 |
| GROMMET,SIGNAL LAMP (Ref # 92071) | 92071-0043 | 2 |
| DAMPER,10X24X12 (Ref # 92075) | 92075-1690 | 5 |
| BOLT,6X8 (Ref # 92154) | 92154-0097 | 4 |
| BOLT,SOCKET,5X16 (Ref # 92154A) | 92154-0209 | 2 |
| DAMPER (Ref # 92161) | 92161-0841 | 2 |
| SCREW,TAPPING,4X12 (Ref # 92172) | 92172-0389 | 4 |
| BOLT-FLANGED,6X25 (Ref # 130) | 130BB0625 | 5 |
| O RING,16MM (Ref # 670) | 670B2016 | 4 |