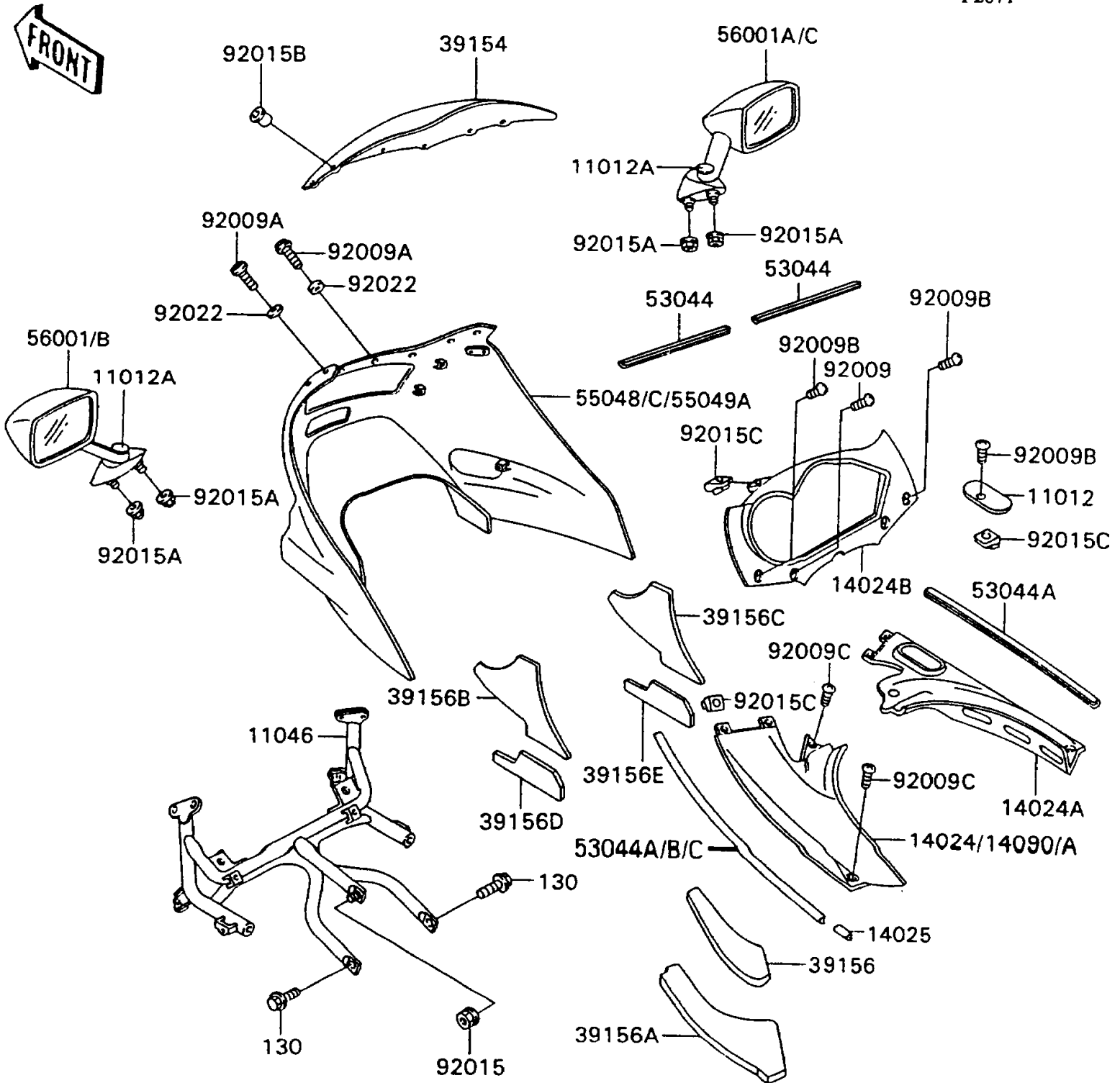


# 1991 Ninja® ZX™-11

## PARTS DIAGRAM

### Cowling

F2871



# 1991 Ninja® ZX™-11

## PARTS LIST

### Cowling

ITEM NAME	PART NUMBER	QUANTITY
CAP,INNER COWLING,RH (Ref # 11012)	11012-1742	1
CAP,MIRROR,BLACK (Ref # 11012A)	11012-1751-6Z	2
BRACKET,UPP COWLING (Ref # 11046)	11046-1892	1
COVER,INNER COWLING,LH (Ref # 14024)	14024-1868	1
COVER,INNER COWLING,RH (Ref # 14024A)	14024-1869	1
COVER,INNER COWLING,FR (Ref # 14024B)	14024-1939	1
COVER,TRIM END (Ref # 14025)	14025-1756	1
COVER,INNER COWLING,LH (Ref # 14090A)	14090-1123	1
WINDSHIELD (Ref # 39154)	39154-1108	1
PAD,INNER COWLING COVER,LH,IN (Ref # 39156)	39156-1192	1
PAD,INNER COWLING COVER,LH,OUT (Ref # 39156A)	39156-1193	1
PAD,UPP COWLING,LH,UPP (Ref # 39156B)	39156-1194	1
PAD,UPP COWLING,RH,UPP (Ref # 39156C)	39156-1195	1
PAD,UPP COWLING,LH,LWR (Ref # 39156D)	39156-1196	1
PAD,UPP COWLING,RH,LWR (Ref # 39156E)	39156-1197	1
TRIM,COWLING COVER (Ref # 53044)	53044-1106	2
TRIM,L=760 (Ref # 53044A)	53044-1240	1
TRIM,L=810 (Ref # 53044C)	53044-1247	1
COWLING.,UPP,EBONY (Ref # 55048C)	55048-5477-H8	1
MIRROR-ASSY,LH,EBONY (Ref # 56001)	56001-1386-H8	1
MIRROR-ASSY,RH,EBONY (Ref # 56001A)	56001-1387-H8	1
SCREW,5X12,BLACK (Ref # 92009)	92009-1182	2
SCREW,6X10 (Ref # 92009A)	92009-1530	4
SCREW,5X14 (Ref # 92009B)	92009-1653	3
SCREW,5X16 (Ref # 92009C)	92009-1654	7
NUT,FLANGED,8MM,BLACK (Ref # 92015)	92015-1183	1
NUT,FLANGED,6MM (Ref # 92015A)	92015-1233	4
NUT,WELL,5MM (Ref # 92015B)	92015-1757	6
NUT,5MM (Ref # 92015C)	92015-1798	4

# 1991 Ninja® ZX™-11

## PARTS LIST

### Cowling

ITEM NAME	PART NUMBER	QUANTITY
WASHER,NYLON,5.3X11.5X1.5 (Ref # 92022)	92022-1521	7
BOLT-FLANGED (Ref # 130)	130J0812	2