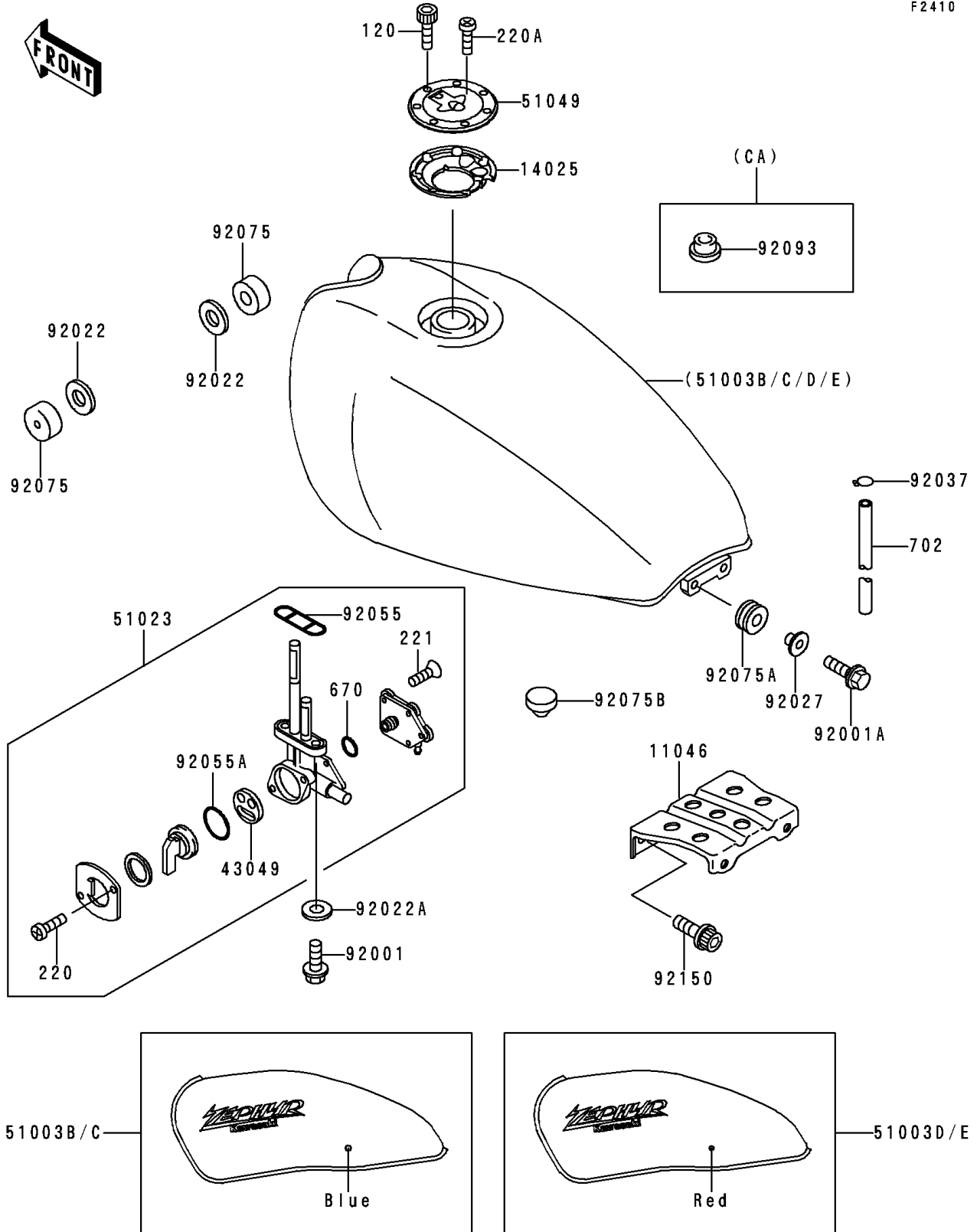


1991 Zephyr

PARTS DIAGRAM

Fuel Tank(ZR550-B1/B2)

F2410



1991 Zephyr

PARTS LIST

Fuel Tank(ZR550-B1/B2)

| ITEM NAME | PART NUMBER | QUANTITY |
|--|---------------|----------|
| BOLT-SOCKET (Ref # 120) | 120S0512 | 7 |
| BRACKET,FUEL TANK (Ref # 11046) | 11046-1789 | 1 |
| COVER,TANK CAP (Ref # 14025) | 14025-1913 | 1 |
| PACKING,TAP VALVE (Ref # 43049) | 43049-1066 | 1 |
| TANK-COMP-FUEL,C.A.BLUE (Ref # 51003B) | 51003-5175-FC | 1 |
| TANK-COMP-FUEL,C.A.BLUE (Ref # 51003C) | 51003-5176-FC | 1 |
| TANK-COMP-FUEL,C.C.RED (Ref # 51003D) | 51003-5177-L1 | 1 |
| TANK-COMP-FUEL,C.C.RED (Ref # 51003E) | 51003-5178-L1 | 1 |
| TAP-ASSY,FUEL (Ref # 51023) | 51023-1166 | 1 |
| CAP-TANK,FUEL (Ref # 51049) | 51049-1091 | 1 |
| BOLT,6X20 (Ref # 92001) | 92001-1091 | 2 |
| BOLT,6X25 (Ref # 92001A) | 92001-1524 | 2 |
| WASHER,10.5X26X2.3 (Ref # 92022) | 92022-044 | 2 |
| WASHER,6.2X11X1.5 (Ref # 92022A) | 92022-183 | 2 |
| COLLAR,L=13.1 (Ref # 92027) | 92027-251 | 2 |
| CLAMP (Ref # 92037) | 92037-1712 | 1 |
| RING-O,FUEL TAP PACKING (Ref # 92055) | 92055-1112 | 1 |
| RING-O,TAP LEVER (Ref # 92055A) | 92055-1419 | 1 |
| DAMPER,FUEL TANK (Ref # 92075) | 92075-125 | 2 |
| DAMPER (Ref # 92075A) | 92075-1690 | 2 |
| DAMPER (Ref # 92075B) | 92075-1737 | 2 |
| SEAL,FUEL TANK CAP (Ref # 92093) | 92093-1030 | 1 |
| BOLT,SOCKET,8X20 (Ref # 92150) | 92150-1155 | 2 |
| SCREW-PAN-CROS (Ref # 220) | 220B0308 | 2 |
| SCREW-PAN-CROS (Ref # 220A) | 220C0508 | 1 |
| SCREW-CSK-CROS,4X14 (Ref # 221) | 221B0414 | 5 |
| O RING,4MM (Ref # 670) | 670B1504 | 1 |
| TUBE-RUBBER,7X10X600 (Ref # 702) | 702A07600 | 1 |