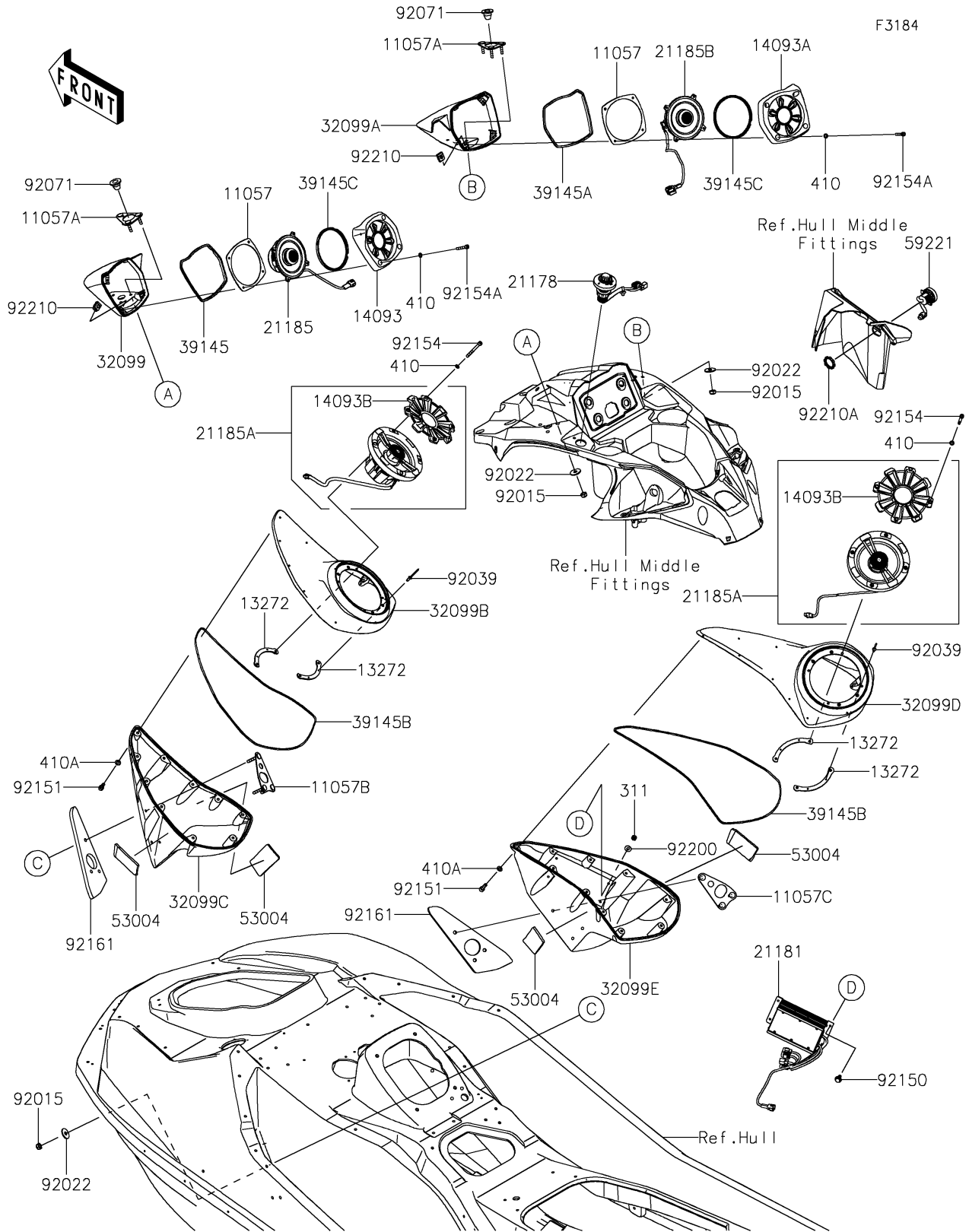


# 2023 JET SKI® ULTRA® 310LX

## PARTS DIAGRAM

Other



# 2023 JET SKI® ULTRA® 310LX

## PARTS LIST

### Other

ITEM NAME	PART NUMBER	QUANTITY
BRACKET,SPEAKER,UPP (Ref # 11057)	11057-7386	2
BRACKET,SPEAKER CASE,UPP (Ref # 11057A)	11057-7394	2
BRACKET,SPEAKER CASE,LH,LWR (Ref # 11057B)	11057-7461	1
BRACKET,SPEAKER CASE,RH,LWR (Ref # 11057C)	11057-7462	1
PLATE,SPEAKER,LWR (Ref # 13272)	13272-3866	4
COVER,SPEAKER,LH,UPP (Ref # 14093)	14093-1178	1
COVER,SPEAKER,RH,UPP (Ref # 14093A)	14093-1179	1
COVER,SPEAKER GRILL (Ref # 14093B)	14093-1186	2
CONTROL-SWITCH,AUDIO (Ref # 21178)	21178-0005	1
AMPLIFIER (Ref # 21181)	21181-0021	1
SPEAKER,LH,UPP (Ref # 21185)	21185-0020	1
SPEAKER,LWR (Ref # 21185A)	21185-0021	2
SPEAKER,RH,UPP (Ref # 21185B)	21185-0023	1
CASE,SPEAKER,LH,UPP (Ref # 32099)	32099-0816	1
CASE,SPEAKER,RH,UPP (Ref # 32099A)	32099-0817	1
CASE,SPEAKER,LH,LWR,UPP,S.BLK (Ref # 32099B)	32099-0818-839	1
CASE,SPEAKER,LH,LWR,LWR,S.BLK (Ref # 32099C)	32099-0819-839	1
CASE,SPEAKER,RH,LWR,UPP,S.BLK (Ref # 32099D)	32099-0820-839	1
CASE,SPEAKER,RH,LWR,LWR,S.BLK (Ref # 32099E)	32099-0821-839	1
TRIM-SEAL,SPEAKER CASE,LH,UPP (Ref # 39145)	39145-0731	1
TRIM-SEAL,SPEAKER CASE,RH,UPP (Ref # 39145A)	39145-0732	1
TRIM-SEAL,SPEAKER CASE,LWR (Ref # 39145B)	39145-0734	2
TRIM-SEAL,SPEAKER,UPP (Ref # 39145C)	39145-0735	2
MAT (Ref # 53004)	53004-0703	4
CONNECTOR-CORD,USB (Ref # 59221)	59221-0020	1
NUT,LOCK,6MM (Ref # 92015)	92015-3766	12
WASHER,6.5X20X1.5 (Ref # 92022)	92022-3710	12
RIVET,3.2X8 (Ref # 92039)	92039-3763	8
GROMMET (Ref # 92071)	92071-3826	2

# 2023 JET SKI® ULTRA® 310LX

## PARTS LIST

### Other

ITEM NAME	PART NUMBER	QUANTITY
BOLT,5X12 (Ref # 92150)	92150-3760	4
BOLT,SOCKET,5X14 (Ref # 92151)	92151-1581	20
BOLT,SOCKET,4X40 (Ref # 92154)	92154-4331	8
BOLT,HEX,4X25 (Ref # 92154A)	92154-4366	8
DAMPER (Ref # 92161)	92161-2459	2
WASHER,5X12X1 (Ref # 92200)	92200-3796	4
NUT,CLIP,4MM (Ref # 92210)	92210-1877	6
NUT (Ref # 92210A)	92210-1934	1
NUT-HEX,5MM (Ref # 311)	311R0500	4
WASHER-PLAIN-SMALL,4MM (Ref # 410)	410S0400	16
W-PLAIN-S,5MM (Ref # 410A)	410S0500	20