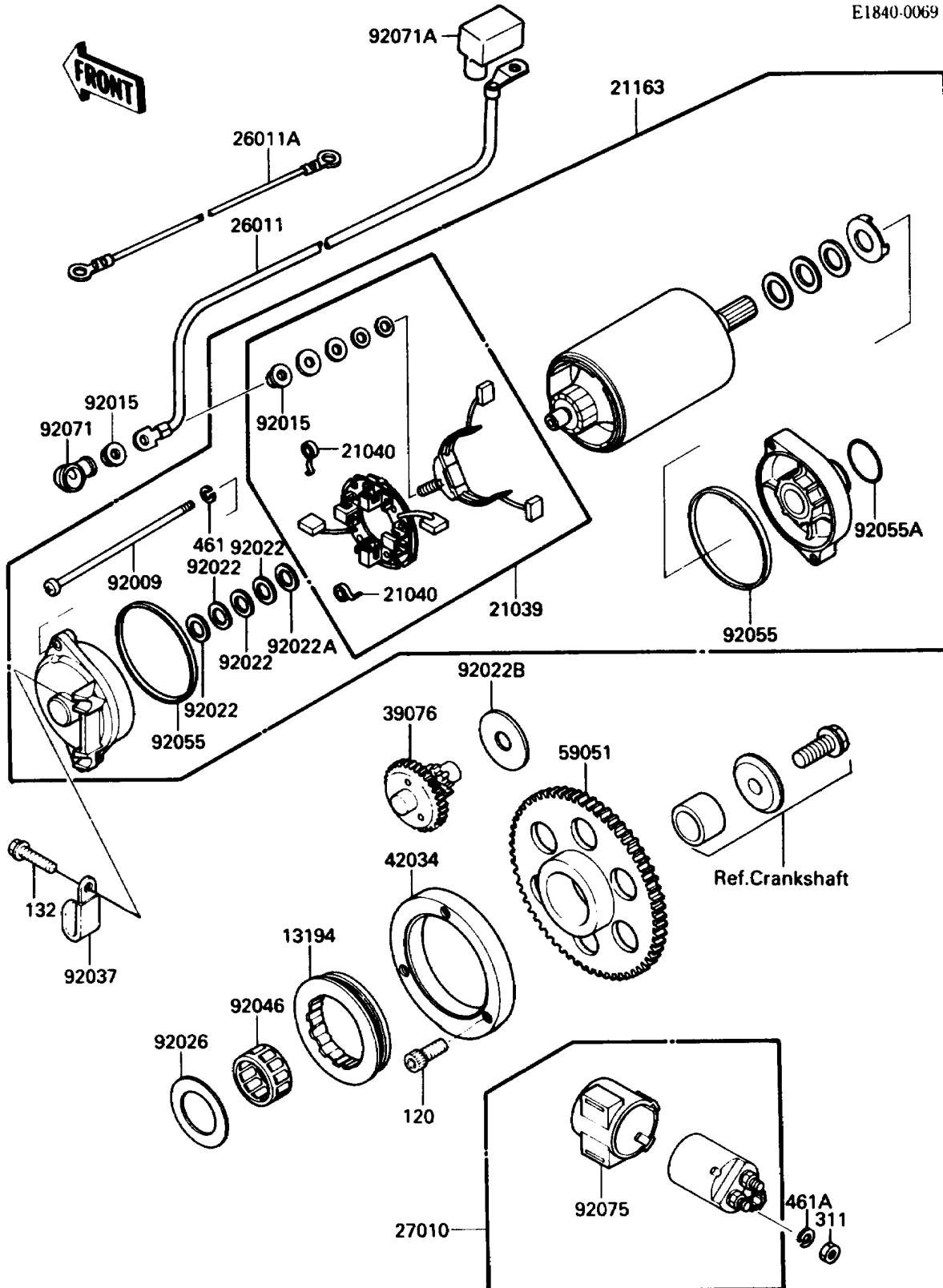


1986 Vulcan 750

PARTS DIAGRAM

Starter Motor

E1840-0069



1986 Vulcan 750

PARTS LIST

Starter Motor

ITEM NAME	PART NUMBER	QUANTITY
CLUTCH-ONEWAY (Ref # 13194)	13194-1062	1
BRUSH,CARBON (Ref # 21039)	21039-1053	1
SPRING-BRUSH (Ref # 21040)	21040-1003	4
STARTER-ELECTRIC (Ref # 21163)	21163-1068	1
WIRE-LEAD,STARTER MOTOR (Ref # 26011)	26011-1276	1
WIRE-LEAD,BATTERY GROUND (Ref # 26011A)	26011-1320	1
SWITCH,MAGNETIC (Ref # 27010)	27010-1209	1
LIMITER,STARTER IDLE GEAR (Ref # 39076)	39076-1051	1
COUPLING (Ref # 42034)	42034-1081	1
GEAR-SPUR,STARTER,63T (Ref # 59051)	59051-1130	1
SCREW (Ref # 92009)	92009-1369	2
NUT,STARTER MOTOR (Ref # 92015)	92015-1476	2
WASHER,9.1X18X0.2 (Ref # 92022)	21025-011	4
WASHER,9.1X18X0.8 (Ref # 92022A)	92022-1132	1
WASHER,12.3X38X2.0 (Ref # 92022B)	92022-1664	1
SPACER,29.1X47.5X1.2 (Ref # 92026)	92026-087	1
CLAMP,WIRING HARNESS (Ref # 92037)	92037-1539	1
BEARING-NEEDLE (Ref # 92046)	92046-1137	1
RING-O,64MM (Ref # 92055)	92055-1086	2
RING-O (Ref # 92055A)	92055-1276	1
GROMMET,STARTER TERMINAL (Ref # 92071)	21017-017	1
GROMMET,TERMINAL (Ref # 92071A)	92071-1130	1
DAMPER,MAGNETIC SWITCH (Ref # 92075)	21064-002	1
BOLT-SOCKET,8X20 (Ref # 120)	120Q0820	3
BOLT-FLANGED-SMALL (Ref # 132)	132J0625	2
NUT-HEX,6MM (Ref # 311)	311B0600	2
WASHER-SPRING,5MM (Ref # 461)	461F0500	2
WASHER-SPRING,6MM (Ref # 461A)	461F0600	2