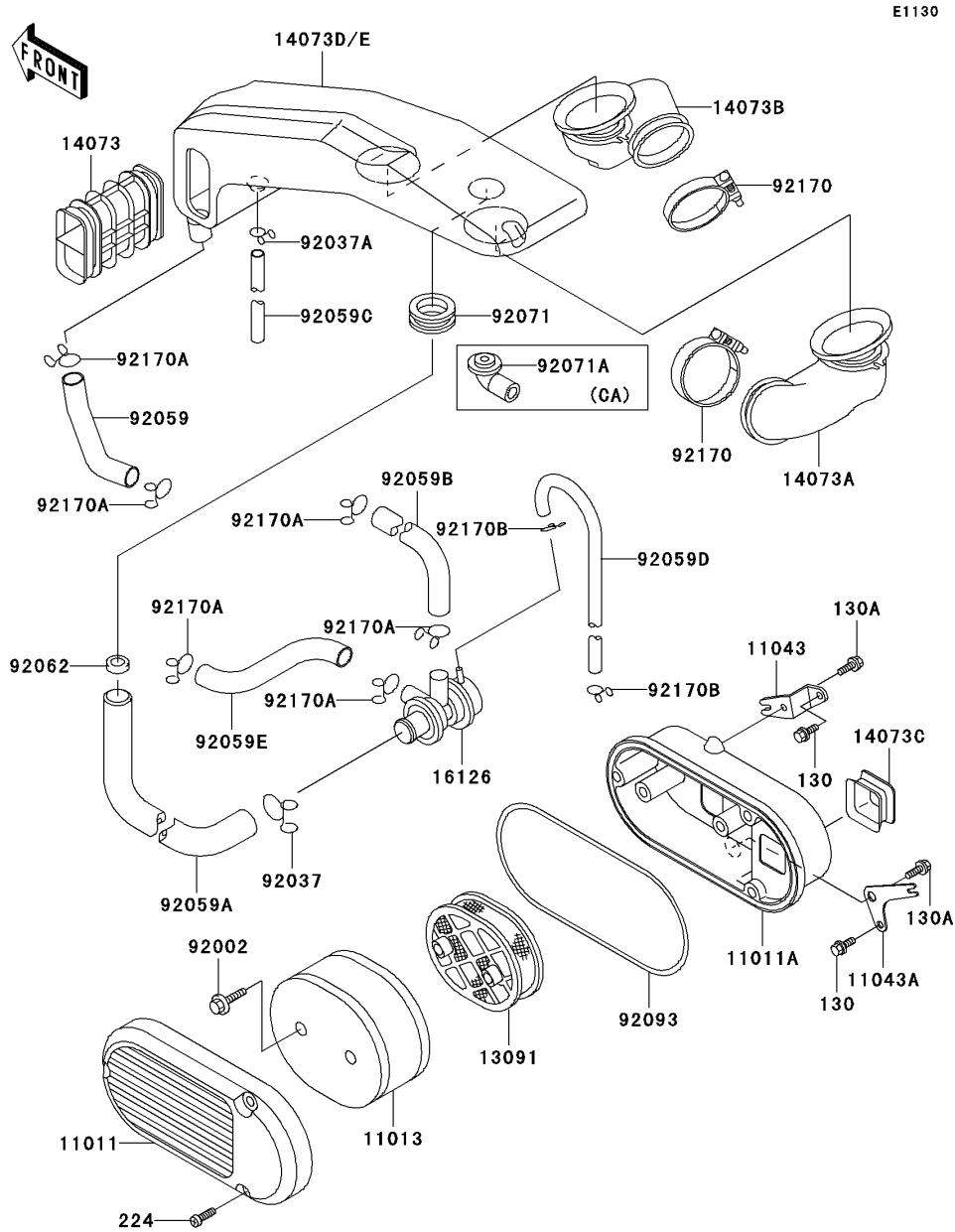


# 1999 Vulcan 750

## PARTS DIAGRAM

### Air Cleaner



# 1999 Vulcan 750

## PARTS LIST

### Air Cleaner

ITEM NAME	PART NUMBER	QUANTITY
BOLT-FLANGED,6X10,BLACK (Ref # 130)	130C0610	4
BOLT-FLANGED,6X12 (Ref # 130A)	130C0612	4
SCREW-PAN-WP-CROS (Ref # 224)	224C0630	6
CASE-AIR FILTER,OUTSIDE (Ref # 11011)	11011-1181	2
CASE-AIR FILTER,INSIDE (Ref # 11011A)	11011-1225	2
ELEMENT-AIR FILTER (Ref # 11013)	11013-1122	2
BRACKET,AIR FILTER CASE (Ref # 11043)	11043-1181	2
BRACKET,AIR FILTER CASE (Ref # 11043A)	11043-1975	2
HOLDER,ELEMENT (Ref # 13091)	13091-1345	2
DUCT,AIR FILTER (Ref # 14073)	14073-1197	2
DUCT,FR,CARBURATOR (Ref # 14073A)	14073-1199	1
DUCT,RR,CARBURATOR (Ref # 14073B)	14073-1200	1
DUCT,INLET (Ref # 14073C)	14073-1209	2
VALVE,AIR SWITCH (Ref # 16126)	16126-1139	1
BOLT,6X25 (Ref # 92002)	92002-1137	4
CLAMP,TUBE (Ref # 92037)	92037-1076	1
CLAMP,TUBE (Ref # 92037A)	92037-147	1
TUBE,15X20X116 (Ref # 92059)	92059-1512	1
TUBE,19X25X600 (Ref # 92059A)	92059-1537	1
TUBE (Ref # 92059B)	92059-1587	1
TUBE (Ref # 92059C)	92059-1603	1
TUBE,4X9X330 (Ref # 92059D)	92059-1617	1
TUBE (Ref # 92059E)	92059-1618	1
NOZZLE,7X20.3X10 (Ref # 92062)	92062-1061	1
GROMMET,AIR FILTER (Ref # 92071)	92071-1013	1
SEAL,AIR FILTER (Ref # 92093)	92093-1177	2
CLAMP (Ref # 92170)	92170-1444	2
CLAMP,TUBE (Ref # 92170A)	92170-1445	6
CLAMP (Ref # 92170B)	92170-1450	2

# 1999 Vulcan 750

## PARTS LIST

### Air Cleaner

ITEM NAME	PART NUMBER	QUANTITY
DUCT,MAIN (Ref # 14073D)	14073-1281	1
DUCT,MAIN (Ref # 14073E)	14073-1282	1
GROMMET,AIR FILTER (Ref # 92071A)	92071-1114	1