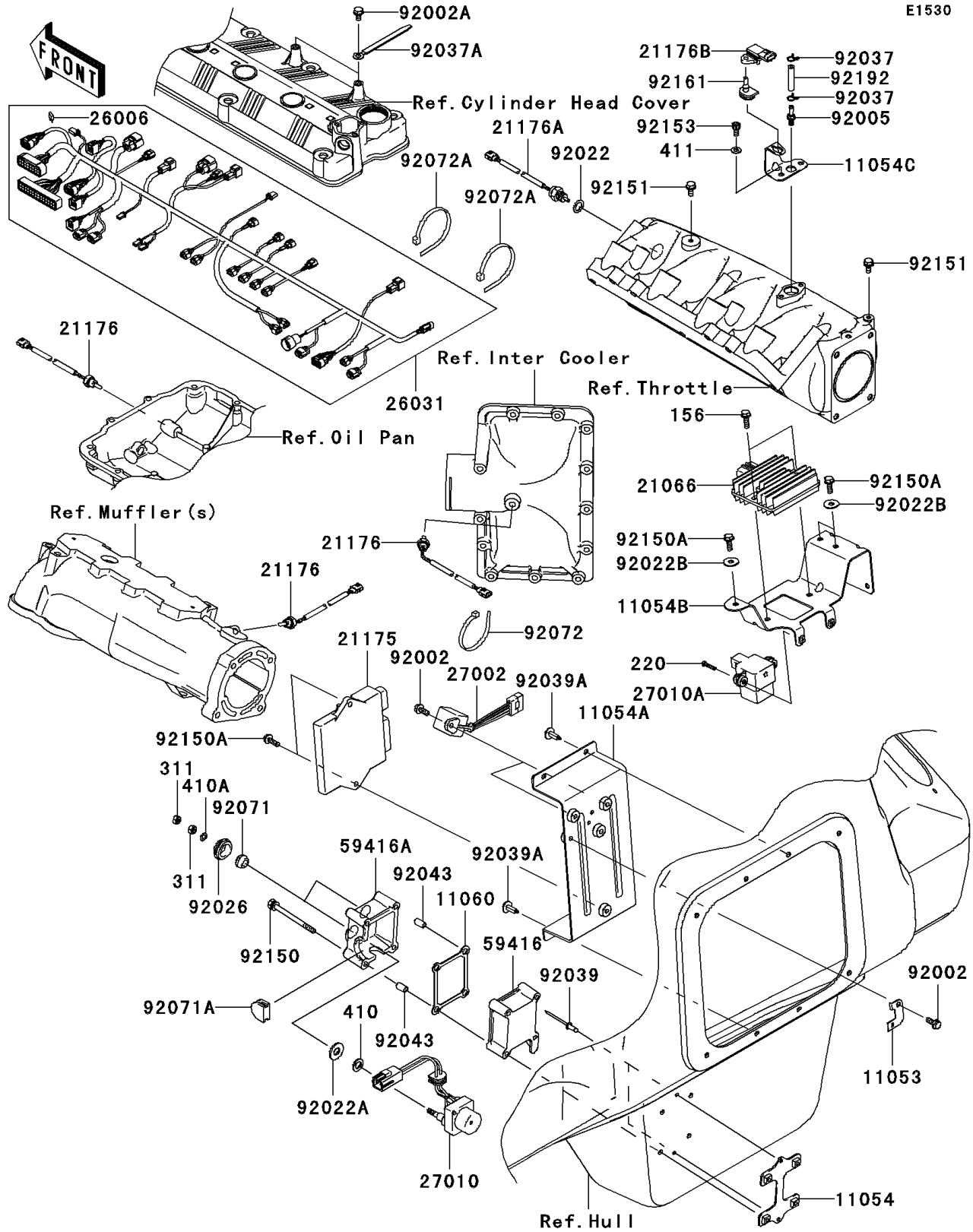


# 2010 Jet Ski® Ultra® 260LX

## PARTS DIAGRAM

### Fuel Injection



# 2010 Jet Ski® Ultra® 260LX

## PARTS LIST

### Fuel Injection

| ITEM NAME                             | PART NUMBER | QUANTITY |
|---------------------------------------|-------------|----------|
| BRACKET,FUSE (Ref # 11053)            | 11053-3724  | 1        |
| BRACKET,SWITCH (Ref # 11054)          | 11054-3742  | 1        |
| BRACKET,ECU&RELAY (Ref # 11054A)      | 11054-3743  | 1        |
| BRACKET,REGULATOR&VDS (Ref # 11054B)  | 11054-3749  | 1        |
| BRACKET (Ref # 11054C)                | 11054-3750  | 1        |
| GASKET (Ref # 11060)                  | 11060-3709  | 1        |
| REGULATOR-VOLTAGE (Ref # 21066)       | 21066-3718  | 1        |
| CONTROL UNIT-ELECTRONIC (Ref # 21175) | 21175-3741  | 1        |
| SENSOR,TEMP (Ref # 21176)             | 21176-3758  | 3        |
| SENSOR,AIR TEMPERATURE (Ref # 21176A) | 21176-3767  | 1        |
| SENSOR,BOOST (Ref # 21176B)           | 21176-3768  | 1        |
| FUSE,20A (Ref # 26006)                | 26006-3704  | 1        |
| HARNESS,ENGINE (Ref # 26031)          | 26031-3725  | 1        |
| RELAY-ASSY (Ref # 27002)              | 27002-3703  | 2        |
| SWITCH (Ref # 27010)                  | 27010-3777  | 1        |
| SWITCH,VDS (Ref # 27010A)             | 27010-3785  | 1        |
| CASE-ELECTRIC (Ref # 59416)           | 59416-3765  | 1        |
| CASE-ELECTRIC (Ref # 59416A)          | 59416-3766  | 1        |
| BOLT,6X16 (Ref # 92002)               | 92002-3728  | 3        |
| BOLT,6X12 (Ref # 92002A)              | 92002-3763  | 2        |
| FITTING (Ref # 92005)                 | 92005-0056  | 1        |
| WASHER,12X18X1.0 (Ref # 92022)        | 92022-1211  | 1        |
| WASHER (Ref # 92022A)                 | 92022-3035  | 2        |
| WASHER,6.5X20X1.5 (Ref # 92022B)      | 92022-3710  | 3        |
| SPACER (Ref # 92026)                  | 92026-3703  | 2        |
| CLAMP,TUBE (Ref # 92037)              | 92037-3025  | 2        |
| CLAMP,L=100 (Ref # 92037A)            | 92037-3736  | 2        |
| RIVET (Ref # 92039)                   | 92039-3714  | 2        |
| RIVET (Ref # 92039A)                  | 92039-3785  | 4        |

# 2010 Jet Ski® Ultra® 260LX

## PARTS LIST

### Fuel Injection

| ITEM NAME                           | PART NUMBER | QUANTITY |
|-------------------------------------|-------------|----------|
| PIN (Ref # 92043)                   | 92043-3715  | 2        |
| GROMMET (Ref # 92071)               | 92071-3004  | 2        |
| GROMMET (Ref # 92071A)              | 92071-3837  | 1        |
| BAND,L=188.85 (Ref # 92072)         | 92072-0105  | 1        |
| BAND,L=372.24 (Ref # 92072A)        | 92072-3883  | 2        |
| BOLT,6X80 (Ref # 92150)             | 92150-3711  | 4        |
| BOLT,6X18 (Ref # 92150A)            | 92150-3729  | 5        |
| BOLT,6X14 (Ref # 92151)             | 92151-3788  | 2        |
| BOLT,SOCKET,6X12 (Ref # 92153)      | 92153-1525  | 2        |
| DAMPER (Ref # 92161)                | 92161-0041  | 1        |
| TUBE,3.5X8X38.5 (Ref # 92192)       | 92192-3823  | 1        |
| BOLT-WP,6X20 (Ref # 156)            | 156R0620    | 2        |
| SCREW-PAN-CROSS,4X20 (Ref # 220)    | 220R0420    | 2        |
| NUT-HEX,6MM (Ref # 311)             | 311R0600    | 4        |
| WASHER-PLAIN-SMALL,10MM (Ref # 410) | 410AA1000   | 2        |
| WASHER-PLAIN-SMALL,6MM (Ref # 410A) | 410S0600    | 2        |
| WASHER-PLAIN,6MM (Ref # 411)        | 411S0600    | 2        |