

# 2011 MULE™ 610 4x4

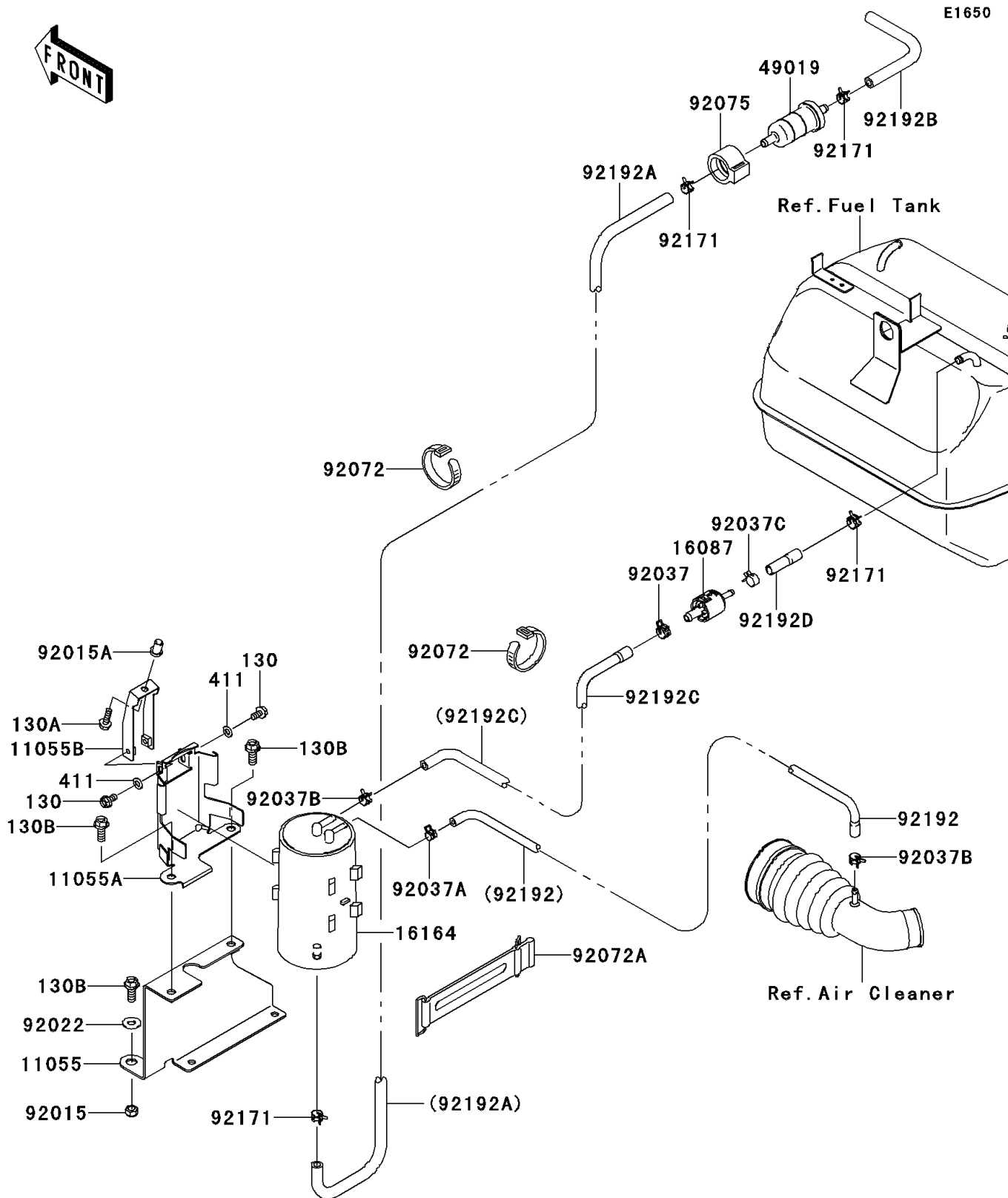
## PARTS DIAGRAM

### Fuel Evaporative System(ABF)

**Kawasaki**

Let the Good Times Roll®

E1650



# 2011 MULE™ 610 4x4

## PARTS LIST

### Fuel Evaporative System(ABF)

ITEM NAME	PART NUMBER	QUANTITY
BRACKET,LWR (Ref # 11055)	11055-0262	1
BRACKET,UPP (Ref # 11055A)	11055-0263	1
BRACKET,FIX UPP (Ref # 11055B)	11055-0401	1
VALVE-CHECK (Ref # 16087)	16087-0002	1
CANISTER (Ref # 16164)	16164-0007	1
FILTER-FUEL (Ref # 49019)	49019-1055	1
NUT,LOCK,8MM (Ref # 92015)	92015-1124	1
NUT,POP,6MM (Ref # 92015A)	92015-1759	1
WASHER,8.5X20X1.6,BLACK (Ref # 92022)	92022-1317	1
CLAMP,HOSE CLIP (Ref # 92037)	92037-1181	1
CLAMP,TUBE (Ref # 92037A)	92037-1461	1
CLAMP,TUBE (Ref # 92037B)	92037-1505	2
CLAMP (Ref # 92037C)	92037-2113	1
BAND,L=186 (Ref # 92072)	92072-056	2
BAND,L=168 (Ref # 92072A)	92072-1306	1
DAMPER,FUEL FILTER (Ref # 92075)	92075-1853	1
CLAMP (Ref # 92171)	92171-0515	4
TUBE,CANISTER-DUCT (Ref # 92192)	92192-0591	1
TUBE,CANISTER-FILTER (Ref # 92192A)	92192-0592	1
TUBE,FILTER-AIR (Ref # 92192B)	92192-0609	1
TUBE,CHECK VALVE-CANISTER (Ref # 92192C)	92192-0768	1
TUBE,TANK-CHECK VALVE (Ref # 92192D)	92192-0769	1
BOLT-FLANGED,6X12 (Ref # 130)	130BB0612	2
BOLT-FLANGED,6X18 (Ref # 130A)	130BB0618	1
BOLT-FLANGED,8X20 (Ref # 130B)	130BB0820	3
WASHER-PLAIN,6.5X13X1 (Ref # 411)	411AB0600	2