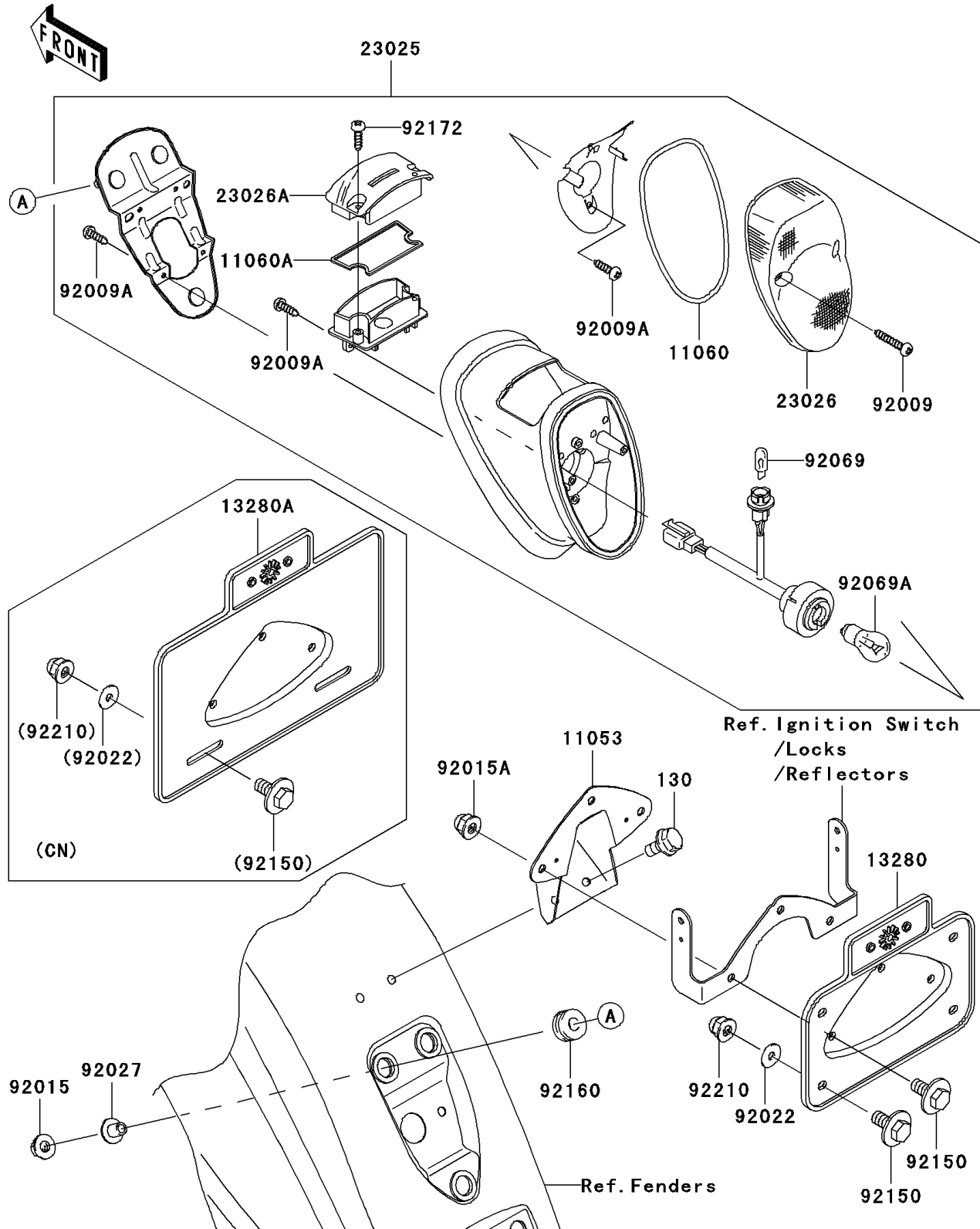


# 2008 Vulcan® 1600 Nomad™

## PARTS DIAGRAM

### Taillight(s)

F2720



# 2008 Vulcan® 1600 Nomad™

## PARTS LIST

### Taillight(s)

ITEM NAME	PART NUMBER	QUANTITY
BOLT-FLANGED,6X12 (Ref # 130)	130J0612	2
BRACKET,LICENSE PLATE HOLDER (Ref # 11053)	11053-1220	1
GASKET,TAIL LAMP (Ref # 11060)	11060-1884	1
GASKET,LICENSE LENS (Ref # 11060A)	11060-1939	1
LAMP-TAIL (Ref # 23025)	23025-1333	1
LENS,TAIL (Ref # 23026)	23026-1220	1
LENS,LICENSE (Ref # 23026A)	23026-1224	1
SCREW,TAPPING,4X20 (Ref # 92009)	92009-1378	2
SCREW,TAPPING,4X12 (Ref # 92009A)	92009-1381	8
NUT,FLANGED,6MM (Ref # 92015)	92015-1367	3
NUT,CAP,6MM (Ref # 92015A)	92015-1385	3
COLLAR,L=13.1,BLACK (Ref # 92027)	92027-1450	3
BULB,12V 5W (Ref # 92069)	92069-1016	1
BULB,12V 21/5W (Ref # 92069A)	92069-1084	1
DAMPER (Ref # 92160)	92160-1162	3
SCREW,TAPPING,4X12 (Ref # 92172)	92172-0084	2
HOLDER,LICENSE PLATE (Ref # 13280)	13280-1103	1
HOLDER,LICENSE PLATE (Ref # 13280A)	13280-1130	1
WASHER,6.5X20X1.6,BLACK (Ref # 92022)	92022-1346	2
WASHER,6.5X20X1.6,BLACK (Ref # 92022)	92022-1346	4
BOLT,6X14 (Ref # 92150)	92150-1133	5
BOLT,6X14 (Ref # 92150)	92150-1133	7
NUT,CAP,6MM (Ref # 92210)	92210-0003	2
NUT,CAP,6MM (Ref # 92210)	92210-0003	4