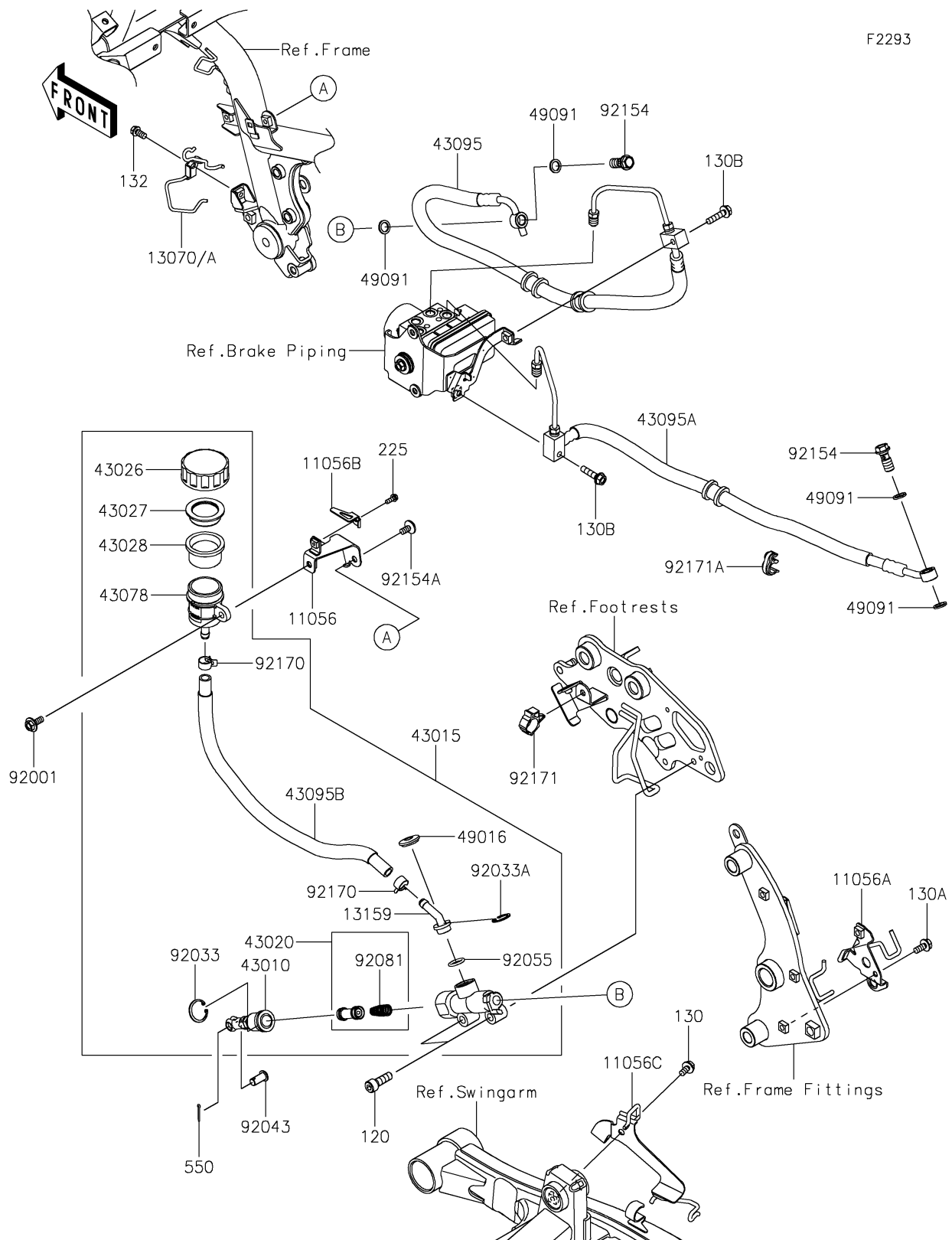


2021 Vulcan® S ABS CAFE

PARTS DIAGRAM

Rear Master Cylinder



2021 Vulcan® S ABS CAFE

PARTS LIST

Rear Master Cylinder

| ITEM NAME | PART NUMBER | QUANTITY |
|-----------------------------------------------|-------------|----------|
| BRACKET,RESERVOIR (Ref # 11056) | 11056-4104 | 1 |
| BRACKET,SWINGARM BKT. (Ref # 11056A) | 11056-4107 | 1 |
| BRACKET,TAMPERPROOF (Ref # 11056B) | 11056-4117 | 1 |
| BRACKET,SWINGARM,RH (Ref # 11056C) | 11056-4444 | 1 |
| GUIDE,RR M/CYL. HOSE (Ref # 13070) | 13070-0779 | 1 |
| GUIDE,RR M/CYL. HOSE (Ref # 13070A) | 13070-0942 | 1 |
| CONNECTOR (Ref # 13159) | 13159-0008 | 1 |
| ROD-ASSY-BRAKE (Ref # 43010) | 43010-0016 | 1 |
| CYLINDER-ASSY-MASTER,RR (Ref # 43015) | 43015-0607 | 1 |
| PISTON-COMP-BRAKE (Ref # 43020) | 43020-1057 | 1 |
| CAP-BRAKE (Ref # 43026) | 43026-0009 | 1 |
| PLATE-DIAPHRAGM (Ref # 43027) | 43027-1053 | 1 |
| DIAPHRAGM (Ref # 43028) | 43028-1065 | 1 |
| RESERVOIR (Ref # 43078) | 43078-0040 | 1 |
| HOSE-BRAKE,ABS UNIT-RR M/CYL. (Ref # 43095) | 43095-0840 | 1 |
| HOSE-BRAKE,ABS UNIT-RR CALIPER (Ref # 43095A) | 43095-0841 | 1 |
| HOSE-BRAKE (Ref # 43095B) | 43095-0859 | 1 |
| COVER-SEAL (Ref # 49016) | 49016-1147 | 1 |
| WASHER-SEAL,10.1X14.5X1.5 (Ref # 49091) | 49091-0001 | 4 |
| BOLT,W/P,6X16 (Ref # 92001) | 92001-1860 | 1 |
| RING-SNAP,20.9X24.6X1.2 (Ref # 92033) | 92033-0079 | 1 |
| RING-SNAP,20.5MM (Ref # 92033A) | 92033-1186 | 1 |
| PIN (Ref # 92043) | 92043-0182 | 1 |
| RING-O,14.8X2.4 (Ref # 92055) | 92055-0741 | 1 |
| SPRING,MASTER CYLINDER (Ref # 92081) | 92081-1737 | 1 |
| BOLT,FLANGED,10X23 (Ref # 92154) | 92154-0732 | 2 |
| BOLT,SOCKET,6X12 (Ref # 92154A) | 92154-0951 | 1 |
| CLAMP,HOSE (Ref # 92170) | 92170-1091 | 2 |
| CLAMP,BRAKE HOSE (Ref # 92171) | 92171-0316 | 1 |

2021 Vulcan® S ABS CAFE

PARTS LIST

Rear Master Cylinder

| ITEM NAME | PART NUMBER | QUANTITY |
|-------------------------------------|-------------|----------|
| CLAMP,BRAKE HOSE (Ref # 92171A) | 92171-1819 | 1 |
| BOLT-SOCKET,8X25 (Ref # 120) | 120CB0825 | 2 |
| BOLT-FLANGED,6X12 (Ref # 130) | 130BA0612 | 1 |
| BOLT-FLANGED,6X14 (Ref # 130A) | 130BA0614 | 1 |
| BOLT-FLANGED,6X25 (Ref # 130B) | 130BA0625 | 2 |
| BOLT-FLANGED-SMALL,6X12 (Ref # 132) | 132BB0612 | 1 |
| SCREW-PAN-WSP-CROS,4X12 (Ref # 225) | 225AB0412 | 1 |
| PIN-COTTER,2.0X15 (Ref # 550) | 550AA2015 | 1 |