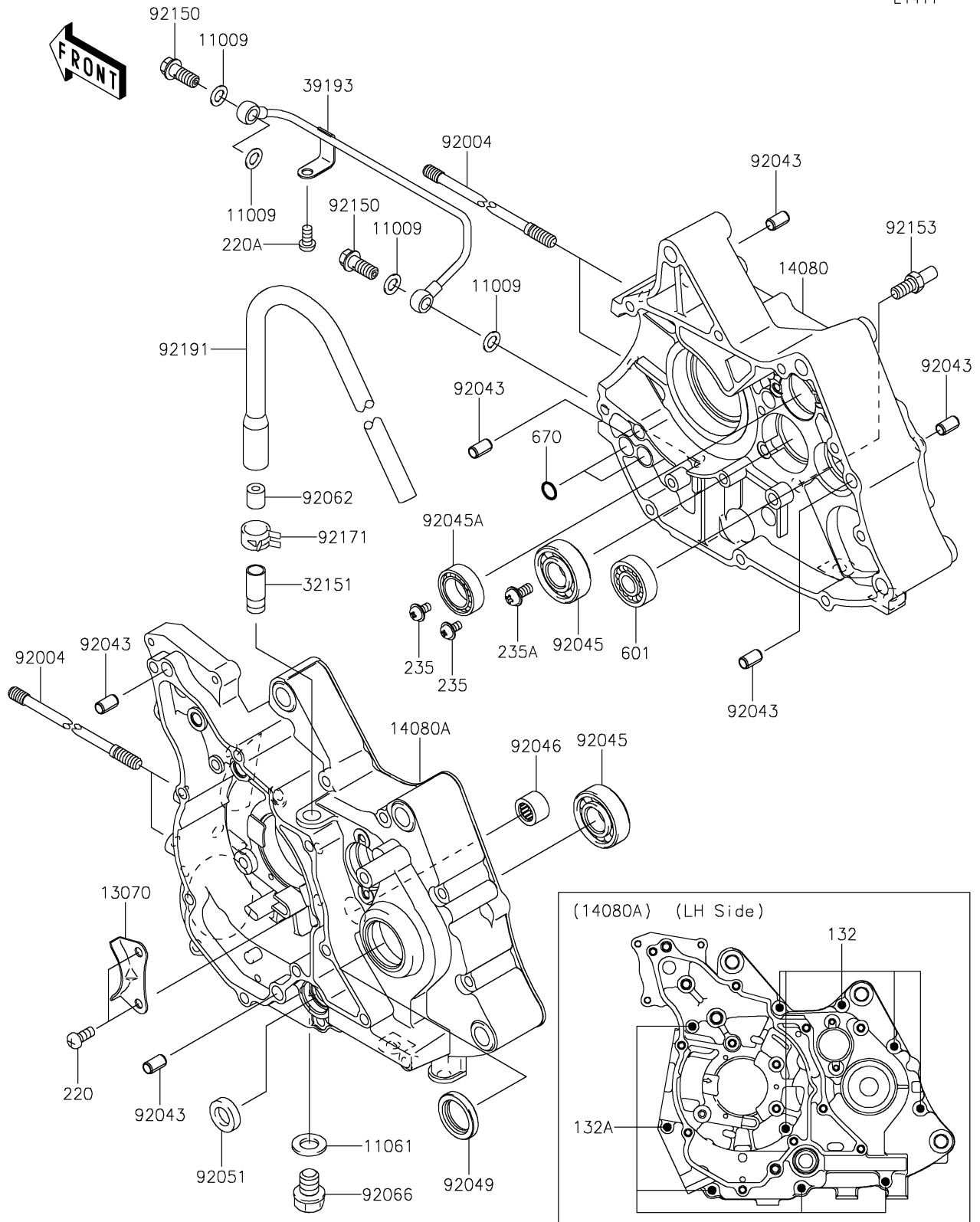


# 2021 KLX<sup>®</sup>110R

## PARTS DIAGRAM

### Crankcase

E1411



# 2021 KLX<sup>®</sup>110R

## PARTS LIST

### Crankcase

| ITEM NAME                            | PART NUMBER | QUANTITY |
|--------------------------------------|-------------|----------|
| GASKET,8.2X14X1.0 (Ref # 11009)      | 11009-1344  | 4        |
| GASKET,DRAIN PLUG (Ref # 11061)      | 11061-0421  | 1        |
| GUIDE (Ref # 13070)                  | 13070-1319  | 1        |
| CRANKCASE,RH (Ref # 14080)           | 14080-0080  | 1        |
| CRANKCASE,LH (Ref # 14080A)          | 14080-0705  | 1        |
| PIPE (Ref # 32151)                   | 32151-1961  | 1        |
| PIPE-OIL (Ref # 39193)               | 39193-1042  | 1        |
| STUD,8X192 (Ref # 92004)             | 92004-0030  | 4        |
| PIN,6.2X8X14 (Ref # 92043)           | 92043-0099  | 6        |
| BEARING-BALL,6203CE J (Ref # 92045)  | 92045-0119  | 2        |
| BEARING-BALL,6804 (Ref # 92045A)     | 92045-0789  | 1        |
| BEARING-NEEDLE,HK1312 (Ref # 92046)  | 92046-1148  | 1        |
| SEAL-OIL (Ref # 92049)               | 92049-1429  | 1        |
| SEAL-OIL,TB13225.5 (Ref # 92051)     | 92051-005   | 1        |
| NOZZLE,5X11.5X12 (Ref # 92062)       | 92062-1090  | 1        |
| PLUG,OIL DRAIN,12X15 (Ref # 92066)   | 92066-0768  | 1        |
| BOLT,BANJO,8X20 (Ref # 92150)        | 92150-1556  | 2        |
| BOLT,8X15.5 (Ref # 92153)            | 92153-1823  | 1        |
| CLAMP (Ref # 92171)                  | 92171-1055  | 1        |
| TUBE,BREATHER (Ref # 92191)          | 92191-1724  | 1        |
| BOLT-FLANGED-SMALL,6X50 (Ref # 132)  | 132BD0650   | 5        |
| BOLT-FLANGED-SMALL,6X75 (Ref # 132A) | 132BD0675   | 5        |
| SCREW-PAN-CROS,6X14 (Ref # 220)      | 220AA0614   | 2        |
| SCREW-PAN-CROS,6X12 (Ref # 220A)     | 220AD0612   | 1        |
| SCREW-PAN-WP-CROS,5X10 (Ref # 235)   | 235AA0510   | 2        |
| SCREW-PAN-WP-CROS,6X14 (Ref # 235A)  | 235AA0614   | 1        |
| BEARING-BALL (Ref # 601)             | 601A6201    | 1        |
| O RING,9.8X1.9 (Ref # 670)           | 670B1510    | 2        |