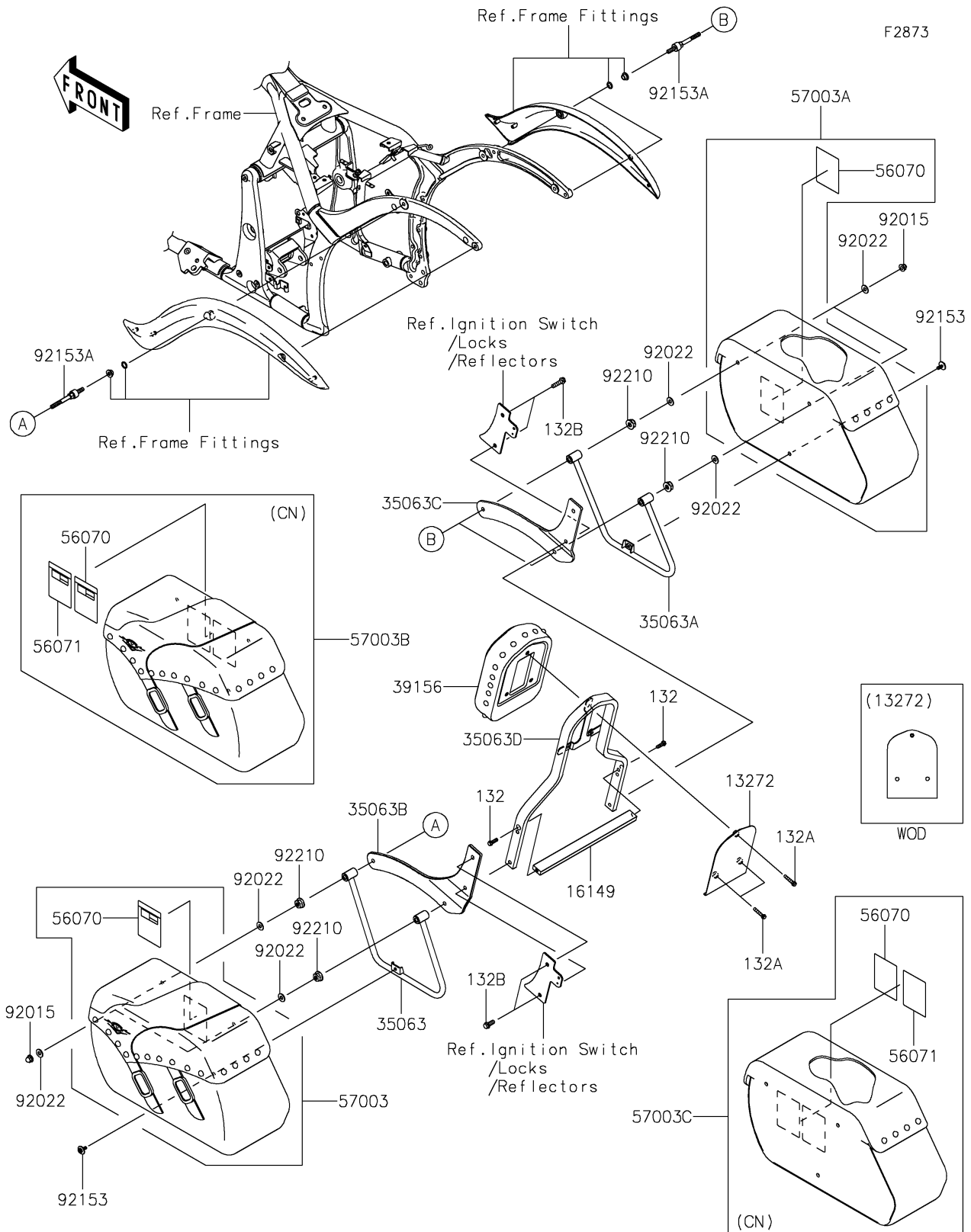


# 2021 VULCAN® 900 CLASSIC LT

## PARTS DIAGRAM

### Saddlebags



# 2021 VULCAN® 900 CLASSIC LT

## PARTS LIST

### Saddlebags

| ITEM NAME                             | PART NUMBER   | QUANTITY |
|---------------------------------------|---------------|----------|
| BOLT-FLANGED-SMALL,6X20 (Ref # 132)   | 132BB0620     | 2        |
| PLATE (Ref # 13272)                   | 13272-0841    | 1        |
| BOLT-FLANGED-SMALL,6X30 (Ref # 132A)  | 132E0630      | 3        |
| BOLT-FLANGED-SMALL,8X20 (Ref # 132B)  | 132E0820      | 4        |
| BAR (Ref # 16149)                     | 16149-0032    | 1        |
| STAY,SIDE BAG,LH (Ref # 35063)        | 35063-0264    | 1        |
| STAY,SIDE BAG,RH (Ref # 35063A)       | 35063-0266    | 1        |
| STAY,BACKREST,LH (Ref # 35063B)       | 35063-0349    | 1        |
| STAY,BACKREST,RH (Ref # 35063C)       | 35063-0350    | 1        |
| STAY,BACKREST (Ref # 35063D)          | 35063-0691    | 1        |
| PAD,SISSY BAR,BLACK (Ref # 39156)     | 39156-0559-MA | 1        |
| LABEL-WARNING,SADDLEBAG (Ref # 56070) | 56070-0076    | 2        |
| NUT,CAP,LOCK,8MM,BLACK (Ref # 92015)  | 92015-1209    | 4        |
| WASHER,8.5X20X1.6,BLACK (Ref # 92022) | 92022-1317    | 8        |
| BOLT,6X16 (Ref # 92153)               | 92153-0684    | 2        |
| BOLT (Ref # 92153A)                   | 92153-1544    | 4        |
| NUT,FLANGED,8MM (Ref # 92210)         | 92210-0555    | 4        |