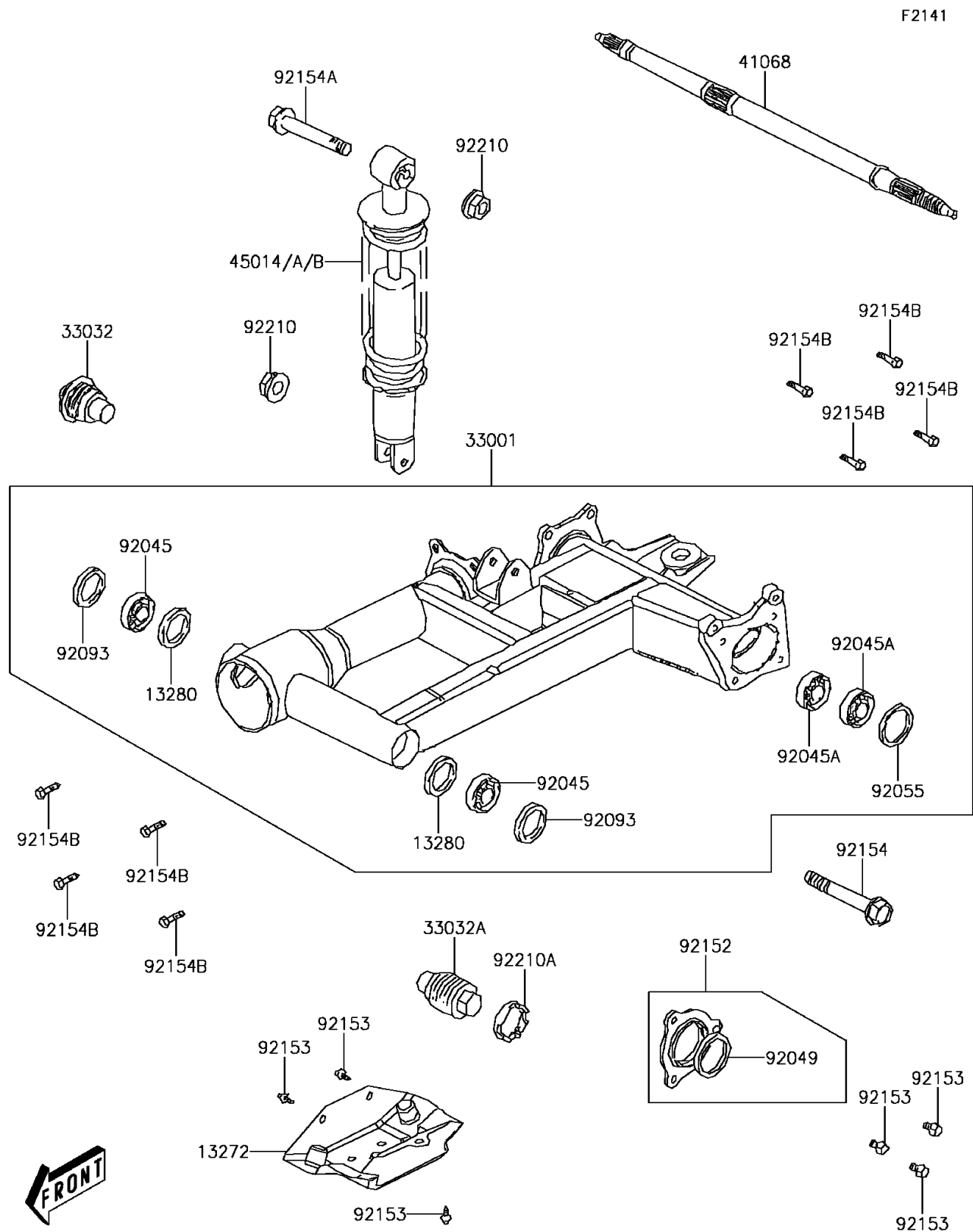


2018 BRUTE FORCE® 300

PARTS DIAGRAM

Swingarm



2018 BRUTE FORCE® 300

PARTS LIST

Swingarm

ITEM NAME	PART NUMBER	QUANTITY
PLATE (Ref # 13272)	13272-Y009	1
HOLDER (Ref # 13280)	13280-Y016	2
ARM-COMP-SWING (Ref # 33001)	33001-Y003	1
SHAFT-SWING ARM (Ref # 33032)	33032-Y001	1
SHAFT-SWING ARM (Ref # 33032A)	33032-Y002	1
AXLE,RR (Ref # 41068)	41068-Y002	1
SHOCKABSORBER,RR,B.SILVER (Ref # 45014A)	45014-Y005-938	1
SHOCKABSORBER,RR,GREEN (Ref # 45014B)	45014-Y005-966	1
BEARING-BALL,30203 (Ref # 92045)	92045-Y027	2
BEARING-BALL,6006 (Ref # 92045A)	92045-Y028	2
SEAL-OIL,38.2X47X6 (Ref # 92049)	92049-Y019	1
RING-O,58.4X3 (Ref # 92055)	92055-Y030	1
SEAL,DUST,26X40X5 (Ref # 92093)	92093-Y014	2
COLLAR (Ref # 92152)	92152-Y024	1
BOLT,FLANGE,8X12 (Ref # 92153)	92153-Y031	6
BOLT,FLANGE,10X53 (Ref # 92154)	92154-Y043	1
BOLT,FLANGE,10X57 (Ref # 92154A)	92154-Y044	1
BOLT,FLANGE,10X25 (Ref # 92154B)	92154-Y139	8
NUT,10MM (Ref # 92210)	92210-Y009	2
NUT,LOCK (Ref # 92210A)	92210-Y051	1