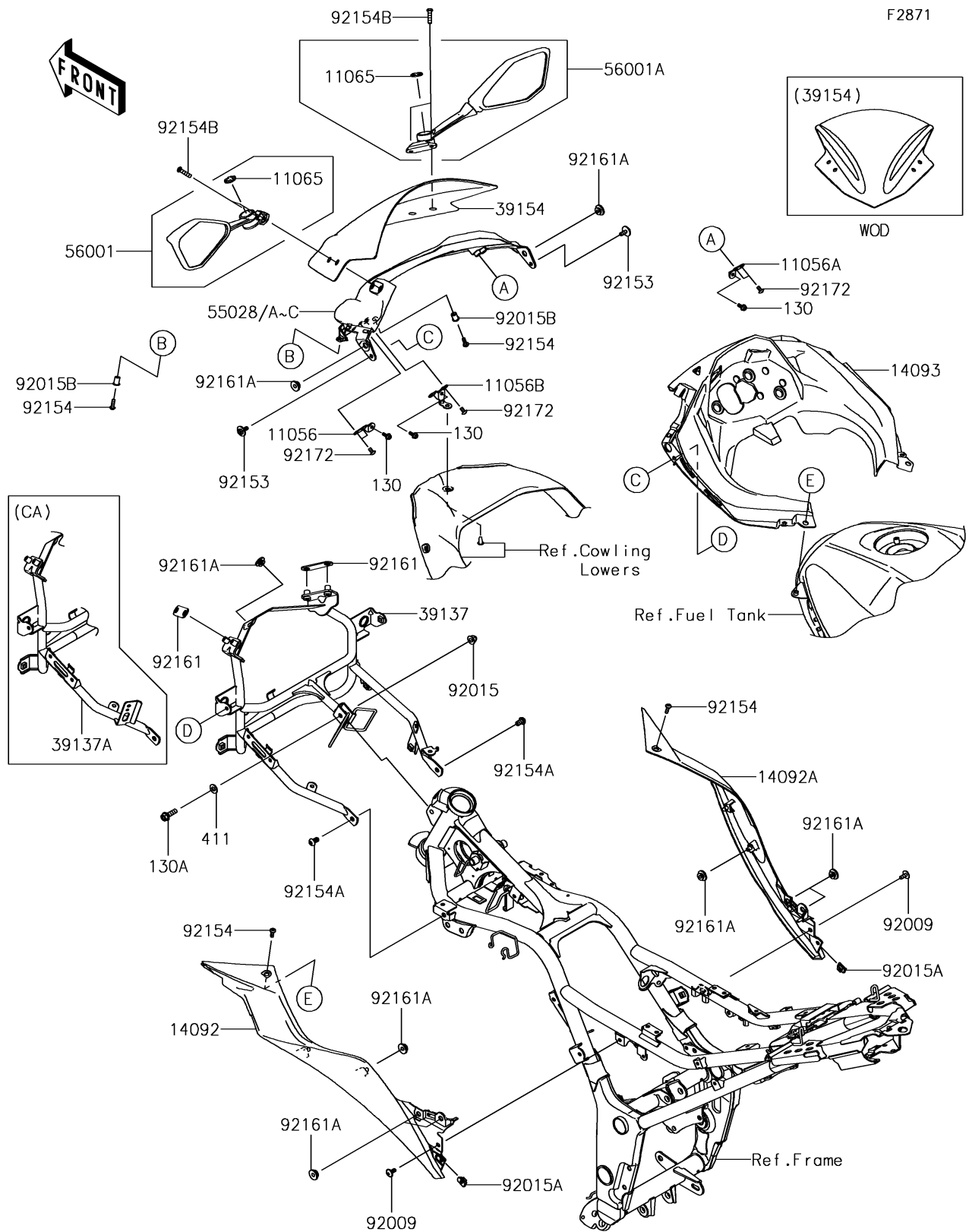


2016 Ninja 300

PARTS DIAGRAM

Cowling



2016 Ninja 300

PARTS LIST

Cowling

ITEM NAME	PART NUMBER	QUANTITY
BRACKET,COWL. STAY,LH (Ref # 11056)	11056-1608	1
BRACKET,COWL. STAY,RH (Ref # 11056A)	11056-1610	1
BRACKET,COWL. STAY (Ref # 11056B)	11056-1611	1
CAP,MIRROR (Ref # 11065)	11065-0945	2
BOLT-FLANGED,5X12 (Ref # 130)	130BA0512	3
BOLT-FLANGED,8X25 (Ref # 130A)	130BB0825	1
COVER,TANK,LH (Ref # 14092)	14092-0922	1
COVER,TANK,RH (Ref # 14092A)	14092-0923	1
COVER,METER (Ref # 14093)	14093-0249	1
STAY-COMP,COWLING,F.S.BLACK (Ref # 39137A)	39137-0566-18R	1
WINDSHIELD (Ref # 39154)	39154-0318	1
WASHER-PLAIN,8.5X18X1.6 (Ref # 411)	411AB0800	1
COWLING,UPP,P.RED (Ref # 55028)	55028-0496-234	1
COWLING,UPP,M.M.C.GRAY (Ref # 55028A)	55028-0496-51B	1
MIRROR-ASSY,LH (Ref # 56001)	56001-0239	1
MIRROR-ASSY,RH (Ref # 56001A)	56001-0240	1
SCREW,6X14 (Ref # 92009)	92009-1662	2
NUT,CAP,8MM,BLACK (Ref # 92015)	92015-1174	1
NUT,5MM (Ref # 92015A)	92015-1627	2
NUT,WELL,5MM (Ref # 92015B)	92015-1757	2
BOLT,6X16 (Ref # 92153)	92153-1423	2
BOLT,SOCKET,5X16 (Ref # 92154)	92154-0182	4
BOLT,SOCKET,8X14 (Ref # 92154A)	92154-1032	2
BOLT,SOCKET,6X25 (Ref # 92154B)	92154-1142	4
DAMPER (Ref # 92161)	92161-1467	2
DAMPER (Ref # 92161A)	92161-1531	9
SCREW,TAPPING,5X10 (Ref # 92172)	92172-0262	6