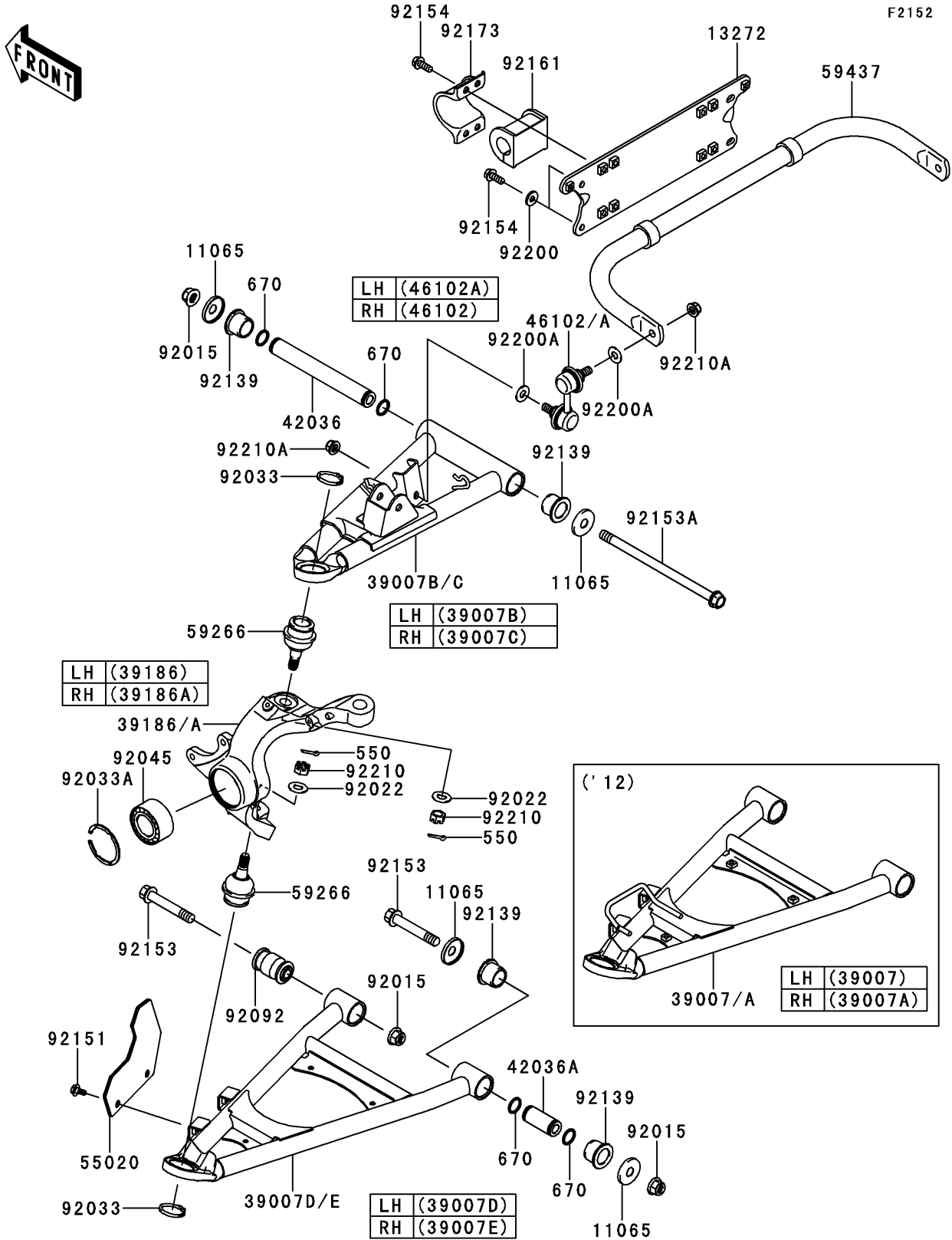


# 2012 TERYX4™ 750 4x4 EPS LE

## PARTS DIAGRAM

### Front Suspension



# 2012 TERYX4™ 750 4x4 EPS LE

## PARTS LIST

### Front Suspension

ITEM NAME	PART NUMBER	QUANTITY
CAP (Ref # 11065)	11065-0253	8
PLATE (Ref # 13272)	13272-1042	1
ARM-SUSP,FR,LWR,LH (Ref # 39007)	39007-0334	1
ARM-SUSP,FR,LWR,RH (Ref # 39007A)	39007-0335	1
ARM-SUSP,FR,UPP,LH (Ref # 39007B)	39007-0362	1
ARM-SUSP,FR,UPP,RH (Ref # 39007C)	39007-0363	1
KNUCKLE,FR,LH (Ref # 39186)	39186-0311	1
KNUCKLE,FR,RH (Ref # 39186A)	39186-0312	1
SLEEVE (Ref # 42036)	42036-0061	2
SLEEVE (Ref # 42036A)	42036-0062	2
ROD,STABILIZER,RH (Ref # 46102)	46102-0100	1
ROD,STABILIZER,LH (Ref # 46102A)	46102-0101	1
PIN-COTTER,3.0X25 (Ref # 550)	550AA3025	4
GUARD,FRONT ARM (Ref # 55020)	55020-0839	2
JOINT-BALL (Ref # 59266)	59266-0014	4
STABILIZER,FR (Ref # 59437)	59437-0305	1
O RING,18MM (Ref # 670)	670B2018	8
NUT,LOCK,FLANGED,12MM (Ref # 92015)	92015-1433	6
WASHER (Ref # 92022)	92022-1831	4
RING-SNAP,C-TYPE,32MM (Ref # 92033)	92033-1262	4
RING-SNAP,55MM (Ref # 92033A)	92033-1274	2
BEARING-BALL,DAC3055W-3CS31 (Ref # 92045)	92045-0123	2
BUSHING-RUBBER (Ref # 92092)	92092-0555	2
BUSHING (Ref # 92139)	92139-0231	8
BOLT,FLANGED,6X13 (Ref # 92151)	92151-1703	4
BOLT,FLANGED,12X76.5 (Ref # 92153)	92153-1733	4
BOLT,FLANGED,12X213 (Ref # 92153A)	92153-1958	2
BOLT,FLANGED,8X20 (Ref # 92154)	92154-0100	12
DAMPER (Ref # 92161)	92161-0539	2

# 2012 TERYX4™ 750 4x4 EPS LE

## PARTS LIST

### Front Suspension

ITEM NAME	PART NUMBER	QUANTITY
CLAMP (Ref # 92173)	92173-0721	2
WASHER,8.2X20.0X2.5 (Ref # 92200)	92200-0205	4
WASHER,10.3X23X1.6 (Ref # 92200A)	92200-2009	4
NUT,CASTLE,12MM (Ref # 92210)	92210-0395	4
NUT,LOCK,FLANGED,10MM (Ref # 92210A)	92210-1080	4