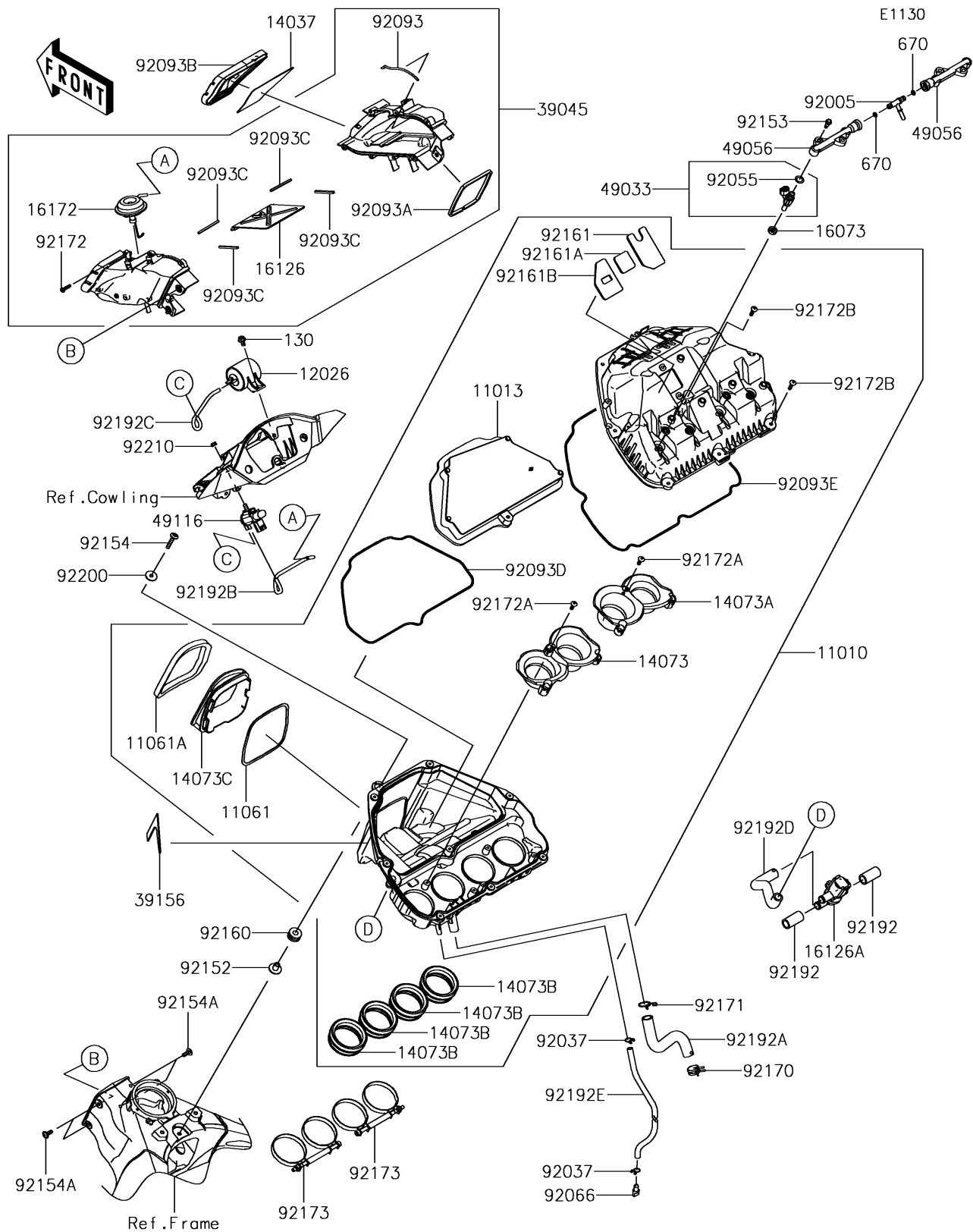


2018 Ninja[®] ZX[™]-10R

PARTS DIAGRAM

Air Cleaner



2018 Ninja® ZX™-10R

PARTS LIST

Air Cleaner

| ITEM NAME | PART NUMBER | QUANTITY |
|---------------------------------------|-------------|----------|
| FILTER-ASSY-AIR (Ref # 11010) | 11010-0870 | 1 |
| ELEMENT-AIR FILTER (Ref # 11013) | 11013-0757 | 1 |
| GASKET (Ref # 11061) | 11061-0444 | 1 |
| GASKET (Ref # 11061A) | 11061-0445 | 1 |
| CHAMBER (Ref # 12026) | 12026-0009 | 1 |
| SCREEN (Ref # 14037) | 14037-0107 | 1 |
| DUCT,FUNNEL,#1 (Ref # 14073) | 14073-0833 | 1 |
| DUCT,FUNNEL,#3 (Ref # 14073A) | 14073-0834 | 1 |
| DUCT,SUB FUNNEL (Ref # 14073B) | 14073-0835 | 4 |
| DUCT (Ref # 14073C) | 14073-0841 | 1 |
| INSULATOR (Ref # 16073) | 16073-0129 | 4 |
| VALVE (Ref # 16126) | 16126-0057 | 1 |
| VALVE,AIR SWITCHING (Ref # 16126A) | 16126-0745 | 1 |
| ACTUATOR (Ref # 16172) | 16172-0023 | 1 |
| DUCT-ASSY,RAM (Ref # 39045) | 39045-0041 | 1 |
| PAD (Ref # 39156) | 39156-1988 | 1 |
| NOZZLE-INJECTION (Ref # 49033) | 49033-0027 | 4 |
| PIPE-INJECTION (Ref # 49056) | 49056-0032 | 2 |
| VALVE-ASSY (Ref # 49116) | 49116-0031 | 1 |
| FITTING (Ref # 92005) | 92005-0125 | 1 |
| CLAMP,TUBE (Ref # 92037) | 92037-147 | 2 |
| RING-O,INJECTION NOZZLE (Ref # 92055) | 92055-0124 | 4 |
| PLUG,DRAIN (Ref # 92066) | 92066-1211 | 1 |
| SEAL (Ref # 92093) | 92093-0175 | 1 |
| SEAL (Ref # 92093A) | 92093-0176 | 1 |
| SEAL (Ref # 92093B) | 92093-0177 | 1 |
| SEAL (Ref # 92093C) | 92093-0178 | 4 |
| SEAL,ELEMENT (Ref # 92093D) | 92093-0686 | 1 |
| SEAL,CASE (Ref # 92093E) | 92093-0693 | 1 |

2018 Ninja® ZX™-10R

PARTS LIST

Air Cleaner

| ITEM NAME | PART NUMBER | QUANTITY |
|---|-------------|----------|
| COLLAR (Ref # 92152) | 92152-2197 | 1 |
| BOLT,FLANGED,5MM (Ref # 92153) | 92153-0361 | 4 |
| BOLT,SOCKET,6X30 (Ref # 92154) | 92154-0435 | 1 |
| BOLT,FLANGED,BUTTON,6X18 (Ref # 92154A) | 92154-1882 | 4 |
| DAMPER (Ref # 92160) | 92160-1162 | 1 |
| DAMPER (Ref # 92161) | 92161-1844 | 1 |
| DAMPER (Ref # 92161A) | 92161-1845 | 1 |
| DAMPER (Ref # 92161B) | 92161-1846 | 1 |
| CLAMP (Ref # 92170) | 92170-1060 | 1 |
| CLAMP (Ref # 92171) | 92171-0391 | 1 |
| SCREW,TAPPING,5X20 (Ref # 92172) | 92172-0009 | 7 |
| BOLT-FLANGED,6X12 (Ref # 130) | 130BA0612 | 1 |
| O RING,8MM (Ref # 670) | 670E1508 | 2 |
| SCREW,TAPPING,5X16 (Ref # 92172A) | 92172-0482 | 6 |
| SCREW,TAPPING,5X20 (Ref # 92172B) | 92172-0483 | 8 |
| CLAMP (Ref # 92173) | 92173-0222 | 2 |
| TUBE,12X17.6X38 (Ref # 92192) | 92192-0887 | 2 |
| TUBE,BREATHER (Ref # 92192A) | 92192-0889 | 1 |
| TUBE,4X8X250 (Ref # 92192B) | 92192-0892 | 1 |
| TUBE (Ref # 92192C) | 92192-1119 | 1 |
| TUBE,AIR CLEANER-ASV (Ref # 92192D) | 92192-1619 | 1 |
| TUBE,10X13X420 (Ref # 92192E) | 92192-1644 | 1 |
| WASHER,6.5X22X1.6 (Ref # 92200) | 92200-1087 | 1 |
| NUT,FLANGED,6MM (Ref # 92210) | 92210-0368 | 1 |