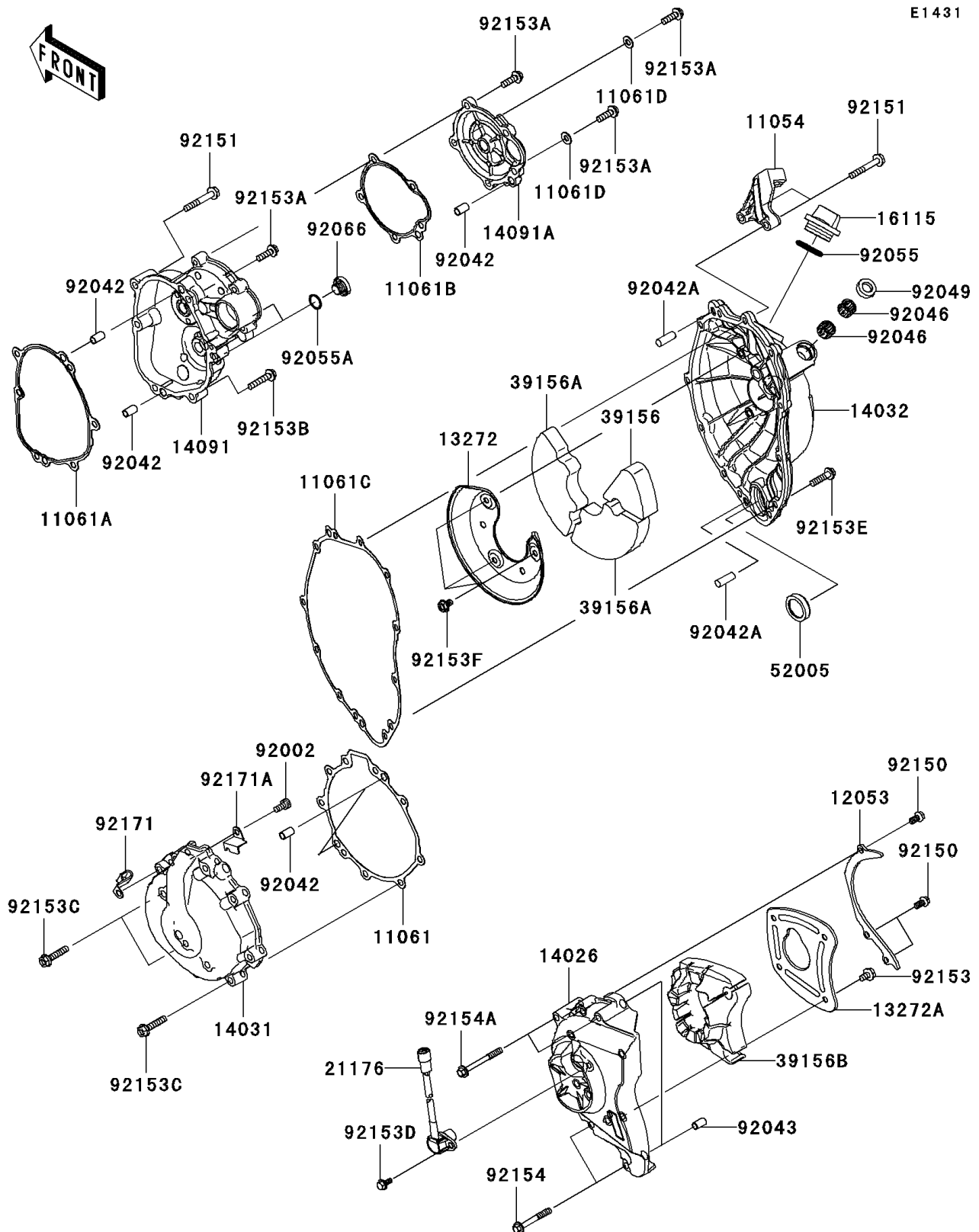


2011 NINJA[®] ZX[™]-6R

PARTS DIAGRAM

Engine Cover(s)



2011 NINJA® ZX™-6R

PARTS LIST

Engine Cover(s)

ITEM NAME	PART NUMBER	QUANTITY
BRACKET,CLUTCH CABLE HOLDER (Ref # 11054)	11054-1212	1
GASKET,GENERATOR COVER (Ref # 11061)	11061-0249	1
GASKET,LARGE COVER (Ref # 11061A)	11061-0250	1
GASKET,SMALL COVER (Ref # 11061B)	11061-0251	1
GASKET,CLUTCH COVER (Ref # 11061C)	11061-0252	1
GASKET,6.2X13.5X1.0 (Ref # 11061D)	11061-0262	2
GUIDE-CHAIN (Ref # 12053)	12053-0109	1
PLATE,CLUTCH COVER PAD (Ref # 13272)	13272-0547	1
PLATE,CLUTCH COVER PAD (Ref # 13272A)	13272-0548	1
COVER-CHAIN (Ref # 14026)	14026-0066	1
COVER-GENERATOR (Ref # 14031)	14031-0114	1
COVER-CLUTCH (Ref # 14032)	14032-0142	1
COVER,STARTER,LARGE (Ref # 14091)	14091-1670	1
COVER,STARTER,SMALL (Ref # 14091A)	14091-1697	1
CAP-OIL FILLER (Ref # 16115)	16115-1009	1
SENSOR,SPEED (Ref # 21176)	21176-0045	1
PAD,CLUTCH COVER,LARGE (Ref # 39156)	39156-0463	1
PAD,CLUTCH COVER,SMALL (Ref # 39156A)	39156-0503	2
PAD,CHAIN COVER (Ref # 39156B)	39156-0522	1
GAUGE (Ref # 52005)	52005-0024	1
BOLT,SOCKET,6X12 (Ref # 92002)	92002-1796	1
PIN,DOWEL,6.3X8X14 (Ref # 92042)	92042-007	5
PIN,DOWEL,8X22 (Ref # 92042A)	92042-044	2
PIN,6.2X8X14 (Ref # 92043)	92043-1263	2
BEARING-NEEDLE,HK1210 (Ref # 92046)	92046-1010	2
SEAL-OIL,CLUTCH RELEASE (Ref # 92049)	92049-1475	1
RING-O,31.5X2.6 (Ref # 92055)	92055-049	1
RING-O,ID=13.8 (Ref # 92055A)	92055-1141	2
PLUG,TIMING HOLE (Ref # 92066)	92066-0067	2

2011 NINJA® ZX™-6R

PARTS LIST

Engine Cover(s)

ITEM NAME	PART NUMBER	QUANTITY
BOLT,FLANGED-SMALL,6X12 (Ref # 92150)	92150-1841	3
BOLT,FLANGED,6X40 (Ref # 92151)	92151-1583	3
BOLT,6X10 (Ref # 92153)	92153-0381	4
BOLT,FLANGED,6X20 (Ref # 92153A)	92153-1010	6
BOLT,FLANGED,6X30 (Ref # 92153B)	92153-1315	4
BOLT,FLANGED,6X30 (Ref # 92153C)	92153-1574	9
BOLT,FLANGED,5X12 (Ref # 92153D)	92153-1582	1
BOLT,FLANGED,6X25 (Ref # 92153E)	92153-1716	10
BOLT,FLANGED,6X10 (Ref # 92153F)	92153-1925	3
BOLT,FLANGED,6X45 (Ref # 92154)	92154-0102	2
BOLT,FLANGED,6X55 (Ref # 92154A)	92154-0103	2
CLAMP (Ref # 92171)	92171-0322	1
CLAMP (Ref # 92171A)	92171-0938	1