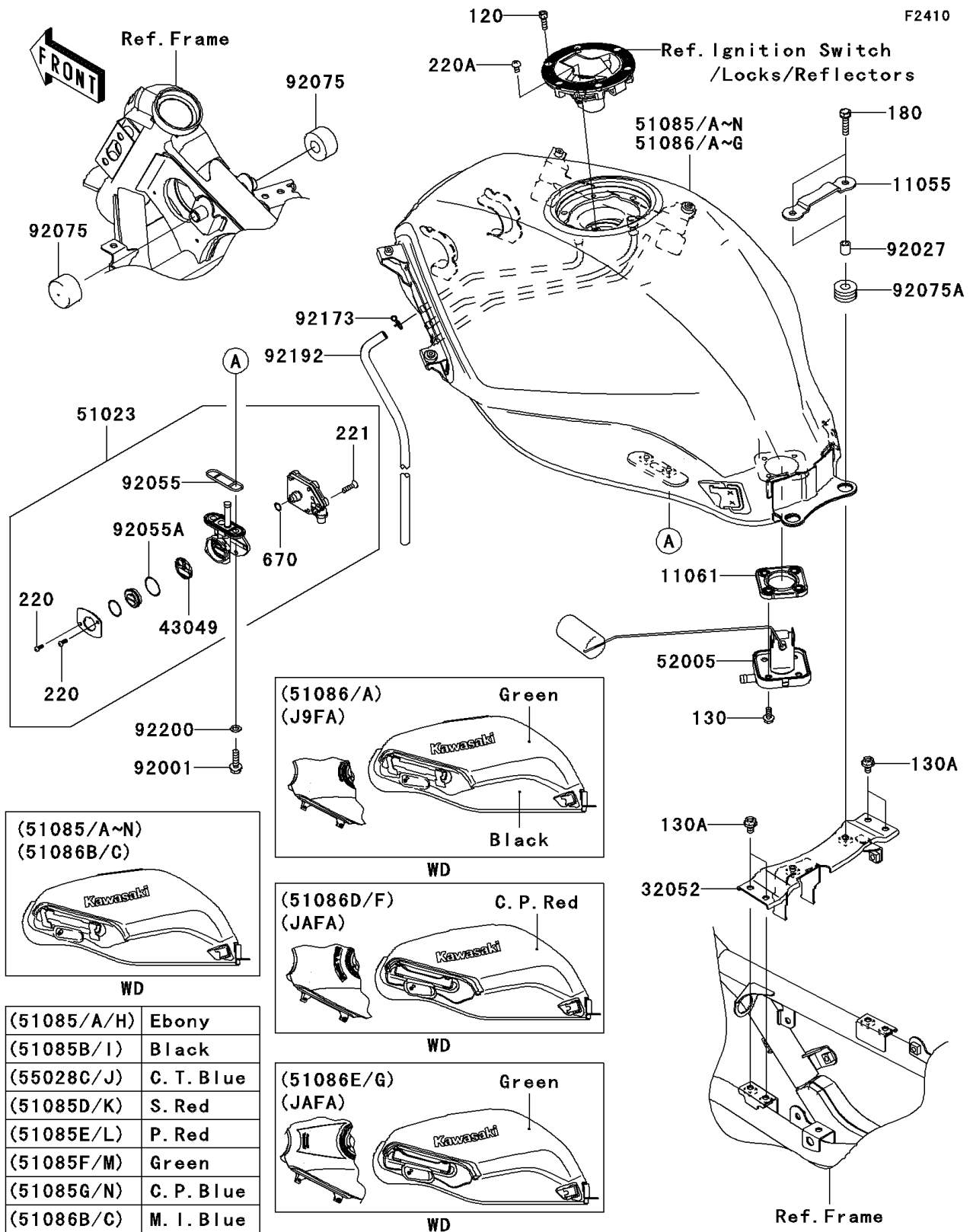


2008 Ninja® 250R

PARTS DIAGRAM

Fuel Tank



2008 Ninja® 250R

PARTS LIST

Fuel Tank

| ITEM NAME | PART NUMBER | QUANTITY |
|--|----------------|----------|
| BRACKET (Ref # 11055) | 11055-0897 | 1 |
| GASKET,FUEL GAUGE (Ref # 11061) | 11061-0279 | 1 |
| BRACKET-TANK,RR (Ref # 32052) | 32052-0083 | 1 |
| PACKING,TAP VALVE (Ref # 43049) | 43049-1091 | 1 |
| TAP-ASSY,FUEL (Ref # 51023) | 51023-0032 | 1 |
| BOLT-SOCKET,5X16 (Ref # 120) | 120CB0516 | 6 |
| BOLT-FLANGED,5X12 (Ref # 130) | 130BA0512 | 4 |
| BOLT-FLANGED,6X10 (Ref # 130A) | 130BA0610 | 4 |
| BOLT-UPSET-WS,6X25 (Ref # 180) | 180BB0625 | 2 |
| SCREW-PAN-CROS,3X8 (Ref # 220) | 220AA0308 | 2 |
| SCREW-PAN-CROSS,5X8 (Ref # 220A) | 220AB0508 | 1 |
| SCREW-CSK-CROS,4X14 (Ref # 221) | 221AA0414 | 5 |
| O RING,3.8X1.9 (Ref # 670) | 670E1504 | 1 |
| GAUGE,FUEL (Ref # 52005) | 52005-0082 | 1 |
| BOLT,6X20 (Ref # 92001) | 92001-1091 | 2 |
| COLLAR,6.8X10X11.5 (Ref # 92027) | 92027-1210 | 2 |
| RING-O,FUEL TAP PACKING (Ref # 92055) | 92055-1112 | 1 |
| RING-O,TAP LEVER (Ref # 92055A) | 92055-1419 | 1 |
| DAMPER,FUEL TANK,FR (Ref # 92075) | 92075-1115 | 2 |
| DAMPER (Ref # 92075A) | 92075-1690 | 2 |
| CLAMP (Ref # 92173) | 92173-0049 | 1 |
| TUBE (Ref # 92192) | 92192-0671 | 1 |
| WASHER,6.5X11.5X0.8 (Ref # 92200) | 92200-0117 | 2 |
| TANK-COMP-FUEL,EBONY (Ref # 51085A) | 51085-5438-IG | 1 |
| TANK-COMP-FUEL,P.RED (Ref # 51085E) | 51085-5439-15I | 1 |
| TANK-COMP-FUEL,L.GREEN (Ref # 51085F) | 51085-5439-777 | 1 |
| TANK-COMP-FUEL,C.P.BLUE (Ref # 51085G) | 51085-5440-15D | 1 |
| TANK-COMP-FUEL,EBONY (Ref # 51085H) | 51085-5441-IG | 1 |
| TANK-COMP-FUEL,P.RED (Ref # 51085L) | 51085-5442-15I | 1 |

2008 Ninja® 250R

PARTS LIST

Fuel Tank

| ITEM NAME | PART NUMBER | QUANTITY |
|--|----------------|----------|
| TANK-COMP-FUEL,L.GREEN (Ref # 51085M) | 51085-5442-777 | 1 |
| TANK-COMP-FUEL,C.P.BLUE (Ref # 51085N) | 51085-5443-15D | 1 |