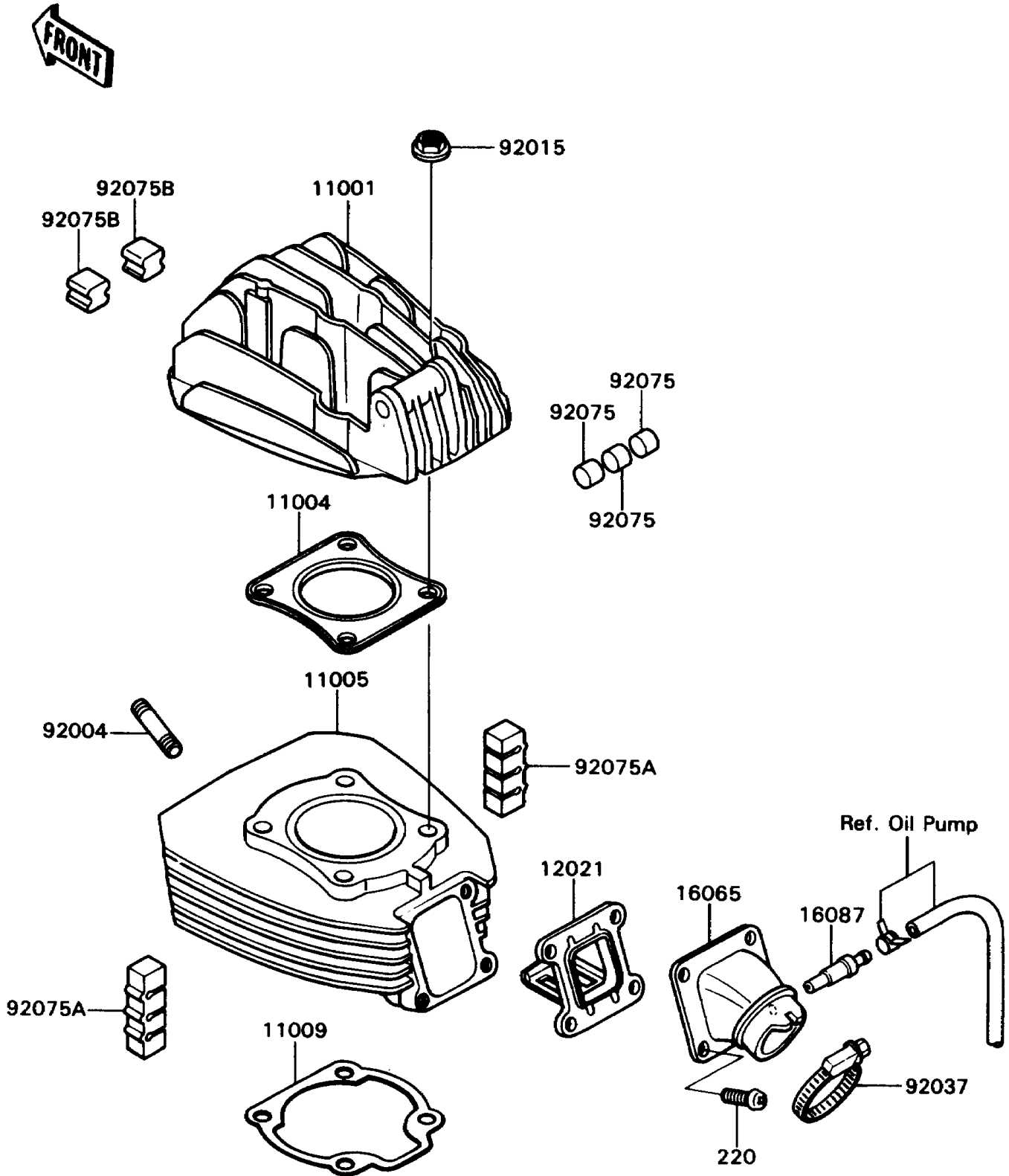


# 1989 KD80

## PARTS DIAGRAM

### Cylinder Head/Cylinder

E1110-0046



# 1989 KD80

## PARTS LIST

### Cylinder Head/Cylinder

| ITEM NAME                           | PART NUMBER | QUANTITY |
|-------------------------------------|-------------|----------|
| HEAD-CYLINDER (Ref # 11001)         | 11001-1285  | 1        |
| GASKET-HEAD (Ref # 11004)           | 11004-1179  | 1        |
| CYLINDER-ENGINE (Ref # 11005)       | 11005-1546  | 1        |
| GASKET,CYLINDER BASE (Ref # 11009)  | 11009-1292  | 1        |
| VALVE-ASSY-REED (Ref # 12021)       | 12021-1009  | 1        |
| HOLDER-CARBURETOR (Ref # 16065)     | 16065-1172  | 1        |
| VALVE-CHECK (Ref # 16087)           | 16087-1001  | 1        |
| STUD,6X22.5 (Ref # 92004)           | 92004-1119  | 2        |
| NUT,8MM (Ref # 92015)               | 92015-1143  | 4        |
| CLAMP,COOLING HOSE (Ref # 92037)    | 92037-1985  | 1        |
| DAMPER (Ref # 92075)                | 92075-1018  | 3        |
| DAMPER,CYLINDER (Ref # 92075A)      | 92075-1268  | 4        |
| DAMPER,CYLINDER HEAD (Ref # 92075B) | 92075-1339  | 10       |
| SCREW-PAN-CROS (Ref # 220)          | 220X0620    | 4        |