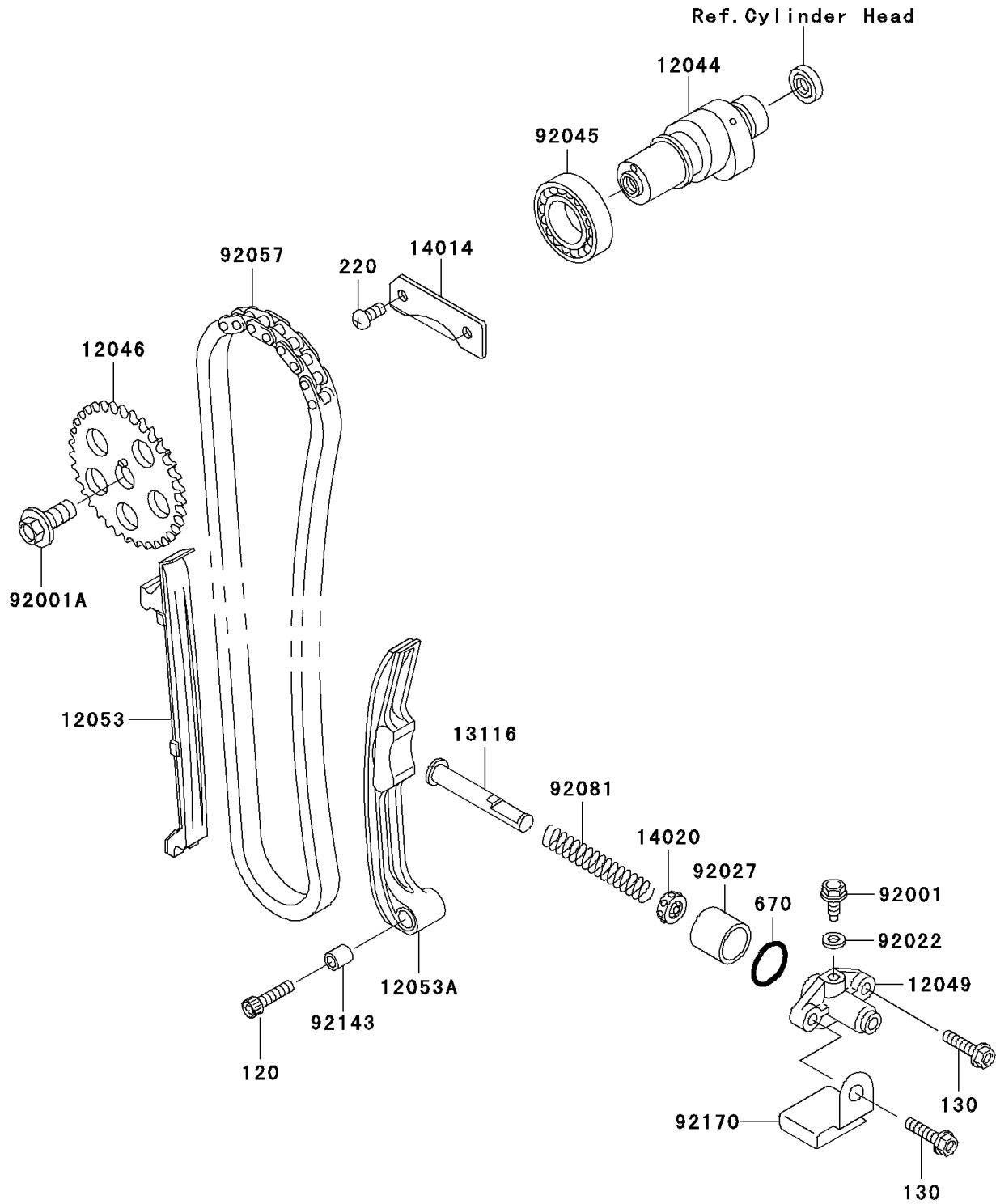


2007 Bayou 250

PARTS DIAGRAM

Camshaft(s)/Tensioner

E1230



2007 Bayou 250

PARTS LIST

Camshaft(s)/Tensioner

| ITEM NAME | PART NUMBER | QUANTITY |
|--------------------------------------|-------------|----------|
| BOLT-SOCKET,6X25 (Ref # 120) | 120CA0625 | 1 |
| BOLT-FLANGED,6X25 (Ref # 130) | 130BD0625 | 2 |
| SCREW-PAN-CROSS,6X14 (Ref # 220) | 220AA0614 | 2 |
| O RING,21MM (Ref # 670) | 670B2021 | 1 |
| CAMSHAFT-VALVE (Ref # 12044) | 12044-1211 | 1 |
| SPROCKET,CAM CHAIN (Ref # 12046) | 12046-1059 | 1 |
| TENSIONER,CAM CHAIN (Ref # 12049) | 12049-1055 | 1 |
| GUIDE-CHAIN,FR (Ref # 12053) | 12053-1224 | 1 |
| GUIDE-CHAIN,TENSIONER (Ref # 12053A) | 12053-1225 | 1 |
| ROD-PUSH (Ref # 13116) | 13116-1129 | 1 |
| PLATE-POSITION (Ref # 14014) | 14014-1054 | 1 |
| RETAINER,TENSIONER (Ref # 14020) | 14020-1054 | 1 |
| BOLT,TENSIONER ADJUST (Ref # 92001) | 92001-1155 | 1 |
| BOLT,10X23 (Ref # 92001A) | 92001-1859 | 1 |
| WASHER,6.1X12X1 (Ref # 92022) | 92022-077 | 1 |
| COLLAR,TENSIONER (Ref # 92027) | 92027-1273 | 1 |
| BEARING-BALL,#6005C4 (Ref # 92045) | 92045-1056 | 1 |
| CHAIN,CAMSHAFT (Ref # 92057) | 92057-1380 | 1 |
| SPRING,TENSIONER (Ref # 92081) | 92081-1105 | 1 |
| COLLAR,6X8X10.2 (Ref # 92143) | 92143-1253 | 1 |
| CLAMP (Ref # 92170) | 92170-1471 | 1 |