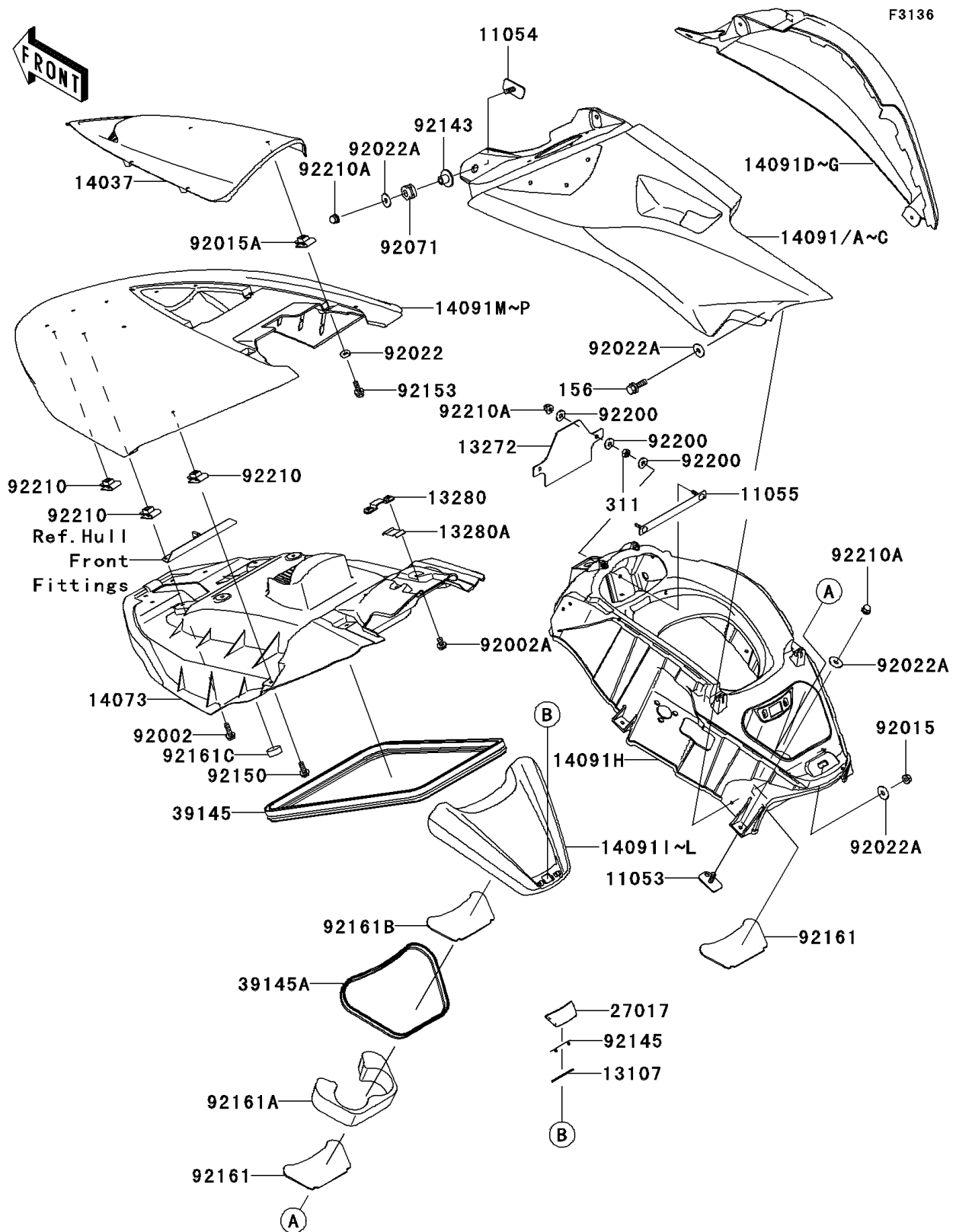


2008 Ultra 250X

PARTS DIAGRAM

Hull Middle Fittings



2008 Ultra 250X

PARTS LIST

Hull Middle Fittings

ITEM NAME	PART NUMBER	QUANTITY
BRACKET (Ref # 11053)	11053-3776	6
BRACKET (Ref # 11054)	11054-3741	2
BRACKET,INTAKE COVER (Ref # 11055)	11055-3707	1
SHAFT (Ref # 13107)	13107-3790	1
PLATE,INTAKE COVER (Ref # 13272)	13272-3710	1
HOLDER,ROD (Ref # 13280)	13280-3749	1
HOLDER,ROD (Ref # 13280A)	13280-3751	1
SCREEN,METER COVER (Ref # 14037)	14037-3711	1
DUCT,HATCH,INNER (Ref # 14073)	14073-3806	1
COVER,SIDE,LH,S.RED (Ref # 14091)	14091-3780-H1	1
COVER,SIDE,LH,L.GREEN (Ref # 14091C)	14091-3780-777	1
COVER,SIDE,RH,S.RED (Ref # 14091D)	14091-3781-H1	1
COVER,SIDE,RH,L.GREEN (Ref # 14091G)	14091-3781-777	1
COVER,HANDLE,F.BLACK (Ref # 14091H)	14091-3782-6Z	1
COVER,CENTER STORAGE,S.RED (Ref # 14091I)	14091-3783-H1	1
COVER,CENTER STORAGE,L.GREEN (Ref # 14091L)	14091-3783-777	1
COVER,HATCH,S.RED (Ref # 14091M)	14091-3784-H1	1
COVER,HATCH,L.GREEN (Ref # 14091P)	14091-3784-777	1
LOCK,CENTER STORAGE (Ref # 27017)	27017-3726	1
TRIM-SEAL (Ref # 39145)	39145-3793	1
TRIM-SEAL,L=720 (Ref # 39145A)	39145-3802	1
BOLT,6X20 (Ref # 92002)	92002-3755	2
BOLT,6X12 (Ref # 92002A)	92002-3763	2
NUT,LOCK,6MM (Ref # 92015)	92015-3766	4
NUT,CLIP,5MM (Ref # 92015A)	92015-3830	4
WASHER,5X16X1.5 (Ref # 92022)	92022-3041	4
WASHER,6.5X20X1.5 (Ref # 92022A)	92022-3710	16
BOLT-WP,6X20 (Ref # 156)	156R0620	4
NUT-HEX,6MM (Ref # 311)	311R0600	2

2008 Ultra 250X

PARTS LIST

Hull Middle Fittings

ITEM NAME	PART NUMBER	QUANTITY
GROMMET (Ref # 92071)	92071-3716	2
COLLAR (Ref # 92143)	92143-3750	2
SPRING (Ref # 92145)	92145-3729	1
BOLT,6X18 (Ref # 92150)	92150-3729	4
BOLT,5X20 (Ref # 92153)	92153-3744	4
DAMPER,CENTER STORAGE (Ref # 92161)	92161-3773	2
DAMPER,CENTER STORAGE (Ref # 92161A)	92161-3775	1
DAMPER,CENTER STORAGE (Ref # 92161B)	92161-3777	1
DAMPER (Ref # 92161C)	92161-3790	2
WASHER,6.5X16X2.0 (Ref # 92200)	92200-1543	6
NUT,6MM (Ref # 92210)	92210-3768	10
NUT,CAP,6MM (Ref # 92210A)	92210-3785	10
COVER,SIDE,LH,BLUE (Ref # 14091B)	14091-3780-16F	1
COVER,SIDE,RH,BLUE (Ref # 14091F)	14091-3781-16F	1
COVER,CENTER STORAGE,BLUE (Ref # 14091K)	14091-3783-16F	1
COVER,HATCH,BLUE (Ref # 14091O)	14091-3784-16F	1