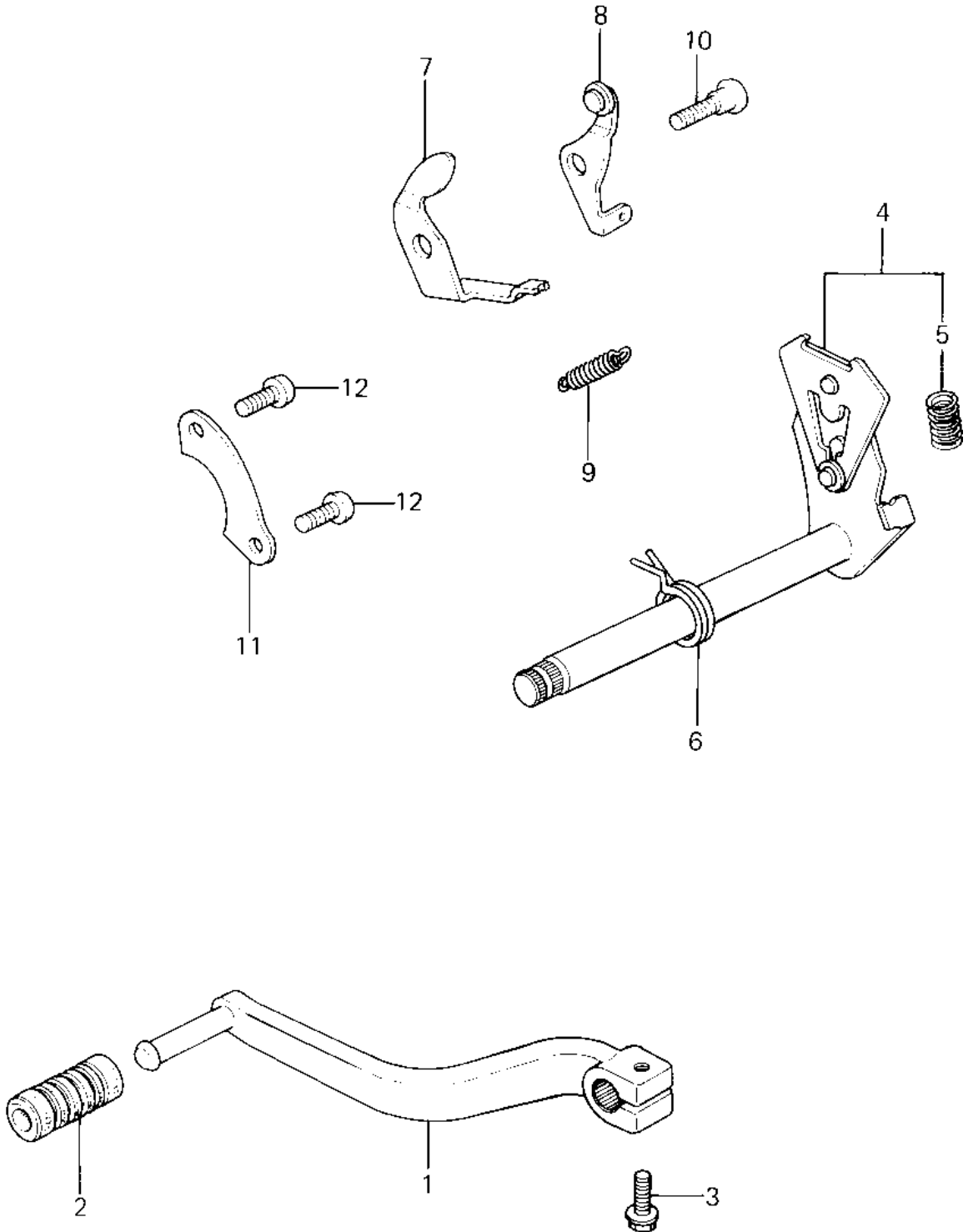


1981 KX80

PARTS DIAGRAM

GEAR CHANGE MECHANISM ('81 KX80-C1)



1981 KX80

PARTS LIST

GEAR CHANGE MECHANISM ('81 KX80-C1)

| ITEM NAME | PART NUMBER | QUANTITY |
|---------------------------------|-------------|----------|
| PEDAL,GEAR CHANGE (Ref # 1) | 13156-1049 | 1 |
| DAMPER,CHANGE PEDAL (Ref # 2) | 92160-1108 | 1 |
| BOLT,FLANGED,6X22 (Ref # 3) | 92001-1352 | 1 |
| LEVER-COMP-CHANGE SHA (Ref # 4) | 13161-1108 | 1 |
| SPRING CHANGE LEVER (Ref # 5) | 92081-1275 | 1 |
| SPRING,TENTION (Ref # 6) | 92081-1129 | 1 |
| LEVER,POSITIONING (Ref # 7) | 13168-1069 | 1 |
| LEVER,POSITIONING (Ref # 8) | 13236-1026 | 1 |
| SPRING,CHANGE LEVER (Ref # 9) | 92081-1109 | 1 |
| SCREW,CHANGE LEVER (Ref # 10) | 92009-1102 | 1 |
| PLATE,CHANGE DRUM (Ref # 11) | 13169-1309 | 1 |
| SCREW PAN HEAD 6X14 (Ref # 12) | 220B0614 | 2 |