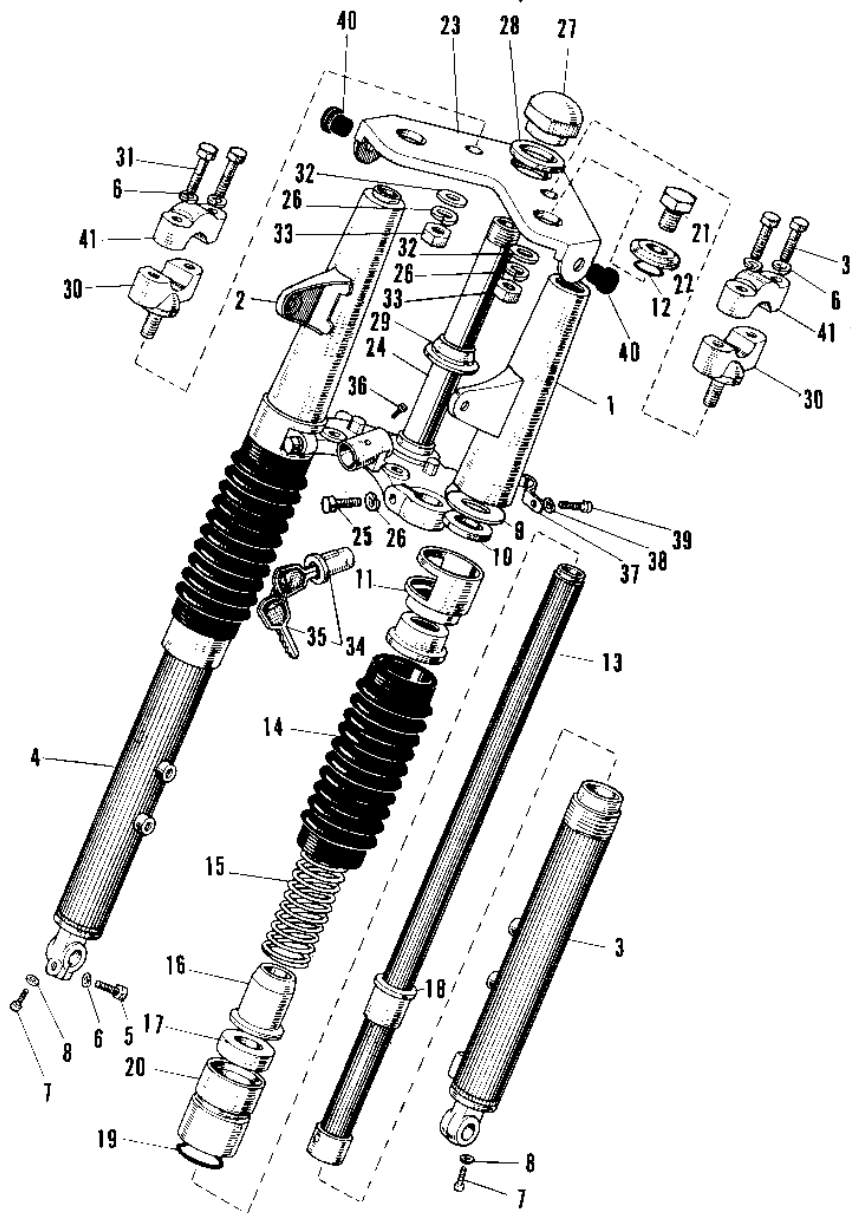


1967 Roadrunner

PARTS DIAGRAM

FRONT FORK (~'68 MODEL)

F
-
1



1967 Roadrunner

PARTS LIST

FRONT FORK (~'68 MODEL)

| ITEM NAME | PART NUMBER | QUANTITY |
|----------------------------------|-------------|----------|
| FRONT FORK ASSY (Ref # 1~28) | 44001-025 | 1 |
| COVER L.H FORK (Ref # 1) | 44033-011 | 1 |
| COVER R.H FORK (Ref # 2) | 44034-010 | 1 |
| TUBE,LH,FORK OUTER (Ref # 3) | 44005-007 | 1 |
| TUBE,RH,FORK OUTER (Ref # 4) | 44006-005 | 1 |
| BOLT-SMALL-UPSET 8X25 (Ref # 5) | 115G0825 | 1 |
| WASHER SPRING 8MM (Ref # 6) | 461F0800 | 5 |
| SCREW PAN HEAD 4X8 (Ref # 7) | 220B0408 | 2 |
| SCREW PAN HEAD 4X8 (Ref # 7) | 220B0408 | 2 |
| GASKET FORK DRAIN PLG (Ref # 8) | 44045-002 | 2 |
| WASHER (Ref # 9) | 44043-009 | 2 |
| GASKET FORK COV GUIDE (Ref # 10) | 44045-007 | 2 |
| GUIDE FORK COVER (Ref # 11) | 44030-001 | 2 |
| GASKET INNER TUBE UPP (Ref # 12) | 44046-002 | 2 |
| TUBE FORK INNER (Ref # 13) | 44013-008 | 2 |
| COVER FORK SPRING (Ref # 14) | 44027-001 | 2 |
| SPRING FORK (Ref # 15) | 44026-008 | 2 |
| DUST SHIELD FORK (Ref # 16) | 44010-015 | 2 |
| OIL SEAL,FORK (Ref # 17) | 44009-021 | 2 |
| GUIDE FORK INNER TUBE (Ref # 18) | 44015-003 | 2 |
| 'O' RING INN TB GUIDE (Ref # 19) | 44046-003 | 2 |
| NUT FORK OUTER TUBE (Ref # 20) | 44007-004 | 2 |
| BOLT FORK FIT 10MM (Ref # 21) | 44041-003 | 2 |
| WASHER FORK FITTING (Ref # 22) | 44043-006 | 2 |
| HEAD STEERING STEM (Ref # 23) | 44039-009 | 1 |
| STEM STEERING (Ref # 24) | 44037-012 | 1 |
| BOLT-UPSET,10X30 (Ref # 25) | 112G1030 | 2 |
| WASHER SPRING 10MM (Ref # 26) | 461F1000 | 4 |
| NUT STEERING STEM (Ref # 27) | 44042-001 | 1 |

1967 Roadrunner

PARTS LIST

FRONT FORK (~'68 MODEL)

| ITEM NAME | PART NUMBER | QUANTITY |
|-----------------------------------|-------------|----------|
| WASHER STEERING STEM (Ref # 28) | 44043-008 | 1 |
| CONE LOWER BEARING (Ref # 29) | 92047-004 | 1 |
| HOLDER LOWER HANDLEBAR (Ref # 30) | 46010-002 | 2 |
| BOLT 8X38 (Ref # 31) | 92001-1405 | 4 |
| WASHER HANDLE HOLDER (Ref # 32) | 92022-038 | 2 |
| NUT,10MM (Ref # 33) | 314B1000 | 2 |
| LOCK ASSY STEERING (Ref # 34) | 27016-009 | 1 |
| SCREW RIVET (Ref # 36) | 92099-001 | 1 |
| CLAMP CABLE (Ref # 37) | 92037-016 | 1 |
| WASHER SPRING 6MM (Ref # 38) | 461F0600 | 1 |
| SCREW PAN HEAD 6X12 (Ref # 39) | 220B0612 | 1 |
| PLUG RUBBER (Ref # 40) | 92074-005 | 2 |
| HOLDER UPPER HANDLEBAR (Ref # 41) | 46012-004 | 2 |