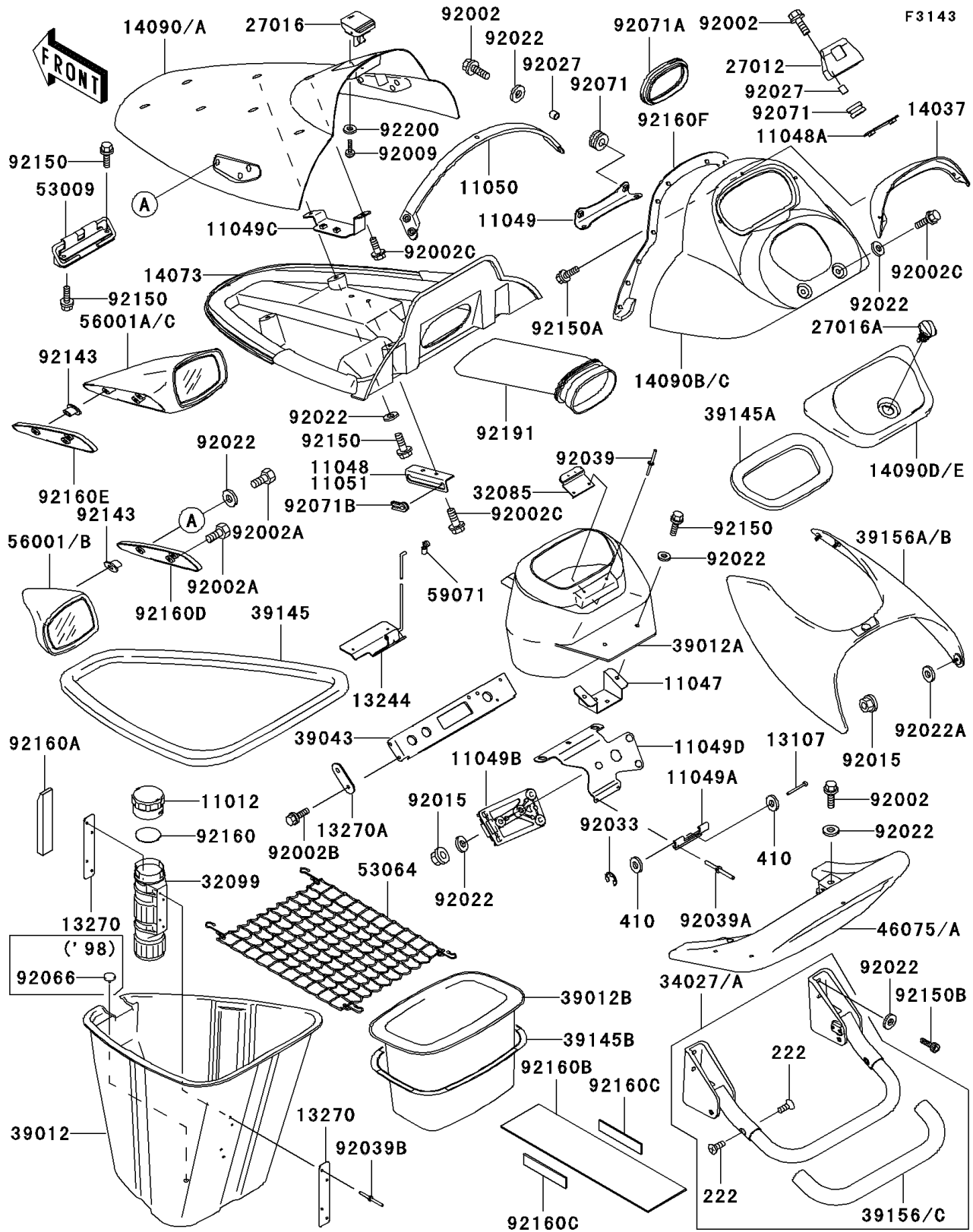


1998 1100 STX

PARTS DIAGRAM

Hull Fittings



1998 1100 STX

PARTS LIST

Hull Fittings

| ITEM NAME | PART NUMBER | QUANTITY |
|---|---------------|----------|
| CAP,FIRE EXTINGUISHER (Ref # 11012) | 11012-3766 | 1 |
| BRACKET,FUEL FILTER (Ref # 11047) | 11047-3761 | 1 |
| BRACKET,HATCH COVER (Ref # 11048) | 11048-3777 | 1 |
| BRACKET,HATCH COVER LOCK (Ref # 11048A) | 11048-3778 | 1 |
| BRACKET,HANDLE COVER (Ref # 11049) | 11049-3716 | 1 |
| BRACKET (Ref # 11049A) | 11049-3717 | 1 |
| BRACKET (Ref # 11049B) | 11049-3718 | 1 |
| BRACKET,HATCH COVER (Ref # 11049C) | 11049-3736 | 1 |
| BRACKET (Ref # 11049D) | 11049-3743 | 1 |
| BRACKET,HATCH COVER (Ref # 11050) | 11050-3739 | 1 |
| SHAFT,3X32 (Ref # 13107) | 13107-3745 | 2 |
| STOPPER-ASSY,HATCH COVER (Ref # 13244) | 13244-3701 | 1 |
| PLATE,FIRE EXTINGUISHER (Ref # 13270) | 13270-3729 | 2 |
| PLATE (Ref # 13270A) | 13270-3835 | 2 |
| SCREEN,F.BLACK (Ref # 14037) | 14037-3707-6Z | 1 |
| DUCT,FR (Ref # 14073) | 14073-3758 | 1 |
| COVER,HATCH,F.RED (Ref # 14090) | 14090-3769-B1 | 1 |
| COVER,HANDLE,F.RED (Ref # 14090B) | 14090-3770-B1 | 1 |
| COVER,CENTER STORAGE,F.RED (Ref # 14090D) | 14090-3771-B1 | 1 |
| HOOK,HATCH COVER LOCK (Ref # 27012) | 27012-3803 | 1 |
| LOCK-ASSY,HATCH COVER (Ref # 27016) | 27016-3737 | 1 |
| LOCK-ASSY,STORAGE COVER (Ref # 27016A) | 27016-3743 | 1 |
| STOPPER,STORAGE LOCK (Ref # 32085) | 32085-3726 | 1 |
| CASE,FIRE EXTINGUISHER (Ref # 32099) | 32099-3769 | 1 |
| STEP-ASSY (Ref # 34027) | 34027-3703 | 1 |
| CASE-STORAGE,FR (Ref # 39012) | 39012-3715 | 1 |
| CASE-STORAGE,CNT (Ref # 39012A) | 39012-3719 | 1 |
| CASE-STORAGE,RR (Ref # 39012B) | 39012-3720 | 1 |
| CROSSMEMBER-COMP (Ref # 39043) | 39043-3701 | 1 |

1998 1100 STX

PARTS LIST

Hull Fittings

| ITEM NAME | PART NUMBER | QUANTITY |
|---------------------------------------|---------------|----------|
| TRIM-SEAL,L=1380 (Ref # 39145) | 39145-3746 | 1 |
| TRIM-SEAL (Ref # 39145A) | 39145-3754 | 1 |
| TRIM-SEAL,STORAGE CASE (Ref # 39145B) | 39145-3755 | 1 |
| PAD,STEP (Ref # 39156) | 39156-3798 | 1 |
| PAD,KNEE,GRAY (Ref # 39156A) | 39156-3811-K8 | 1 |
| SCREW-CSK-RD-CROS (Ref # 222) | 222R0612 | 4 |
| W-PLAIN-S,3MM (Ref # 410) | 410S0300 | 4 |
| GRIP,TAIL,F.RED (Ref # 46075A) | 46075-3745-6L | 1 |
| HINGE,HATCH COVER (Ref # 53009) | 53009-3723 | 1 |
| NET-CARGO (Ref # 53064) | 53064-3701 | 1 |
| MIRROR-ASSY,LH,F.RED (Ref # 56001) | 56001-3709-6L | 1 |
| MIRROR-ASSY,RH,F.RED (Ref # 56001A) | 56001-3710-6L | 1 |
| JOINT (Ref # 59071) | 59071-3743 | 1 |
| BOLT,6X25 (Ref # 92002) | 92002-3714 | 8 |
| BOLT,6X40 (Ref # 92002A) | 92002-3716 | 6 |
| BOLT,6X20 (Ref # 92002B) | 92002-3755 | 4 |
| BOLT,6X12 (Ref # 92002C) | 92002-3763 | 5 |
| SCREW,5X16 (Ref # 92009) | 92009-3789 | 2 |
| NUT,6MM (Ref # 92015) | 92015-3767 | 10 |
| WASHER,6.5X20X1.5 (Ref # 92022) | 92022-3710 | 21 |
| WASHER,6.2X20X2 (Ref # 92022A) | 92022-3714 | 7 |
| COLLAR,6.2X10X10 (Ref # 92027) | 92027-3705 | 4 |
| RING-SNAP,2MM (Ref # 92033) | 92033-3711 | 2 |
| RIVET,4MM (Ref # 92039) | 92039-3703 | 2 |
| RIVET (Ref # 92039A) | 92039-3748 | 2 |
| RIVET (Ref # 92039B) | 92039-3755 | 4 |
| PLUG (Ref # 92066) | 92066-3752 | 2 |
| GROMMET (Ref # 92071) | 92071-3716 | 4 |
| GROMMET (Ref # 92071A) | 92071-3812 | 1 |

1998 1100 STX

PARTS LIST

Hull Fittings

| ITEM NAME | PART NUMBER | QUANTITY |
|---|---------------|----------|
| GROMMET (Ref # 92071B) | 92071-3816 | 1 |
| COLLAR (Ref # 92143) | 92143-3763 | 6 |
| BOLT,6X18 (Ref # 92150) | 92150-3729 | 8 |
| BOLT,5X12 (Ref # 92150A) | 92150-3760 | 3 |
| BOLT,SOCKET,6X18 (Ref # 92150B) | 92150-3775 | 4 |
| DAMPER (Ref # 92160) | 92160-3814 | 1 |
| DAMPER (Ref # 92160A) | 92160-3821 | 1 |
| DAMPER,WATER MUFFLER (Ref # 92160B) | 92160-3839 | 1 |
| DAMPER (Ref # 92160C) | 92160-3840 | 2 |
| DAMPER,MIRROR,LH,F.BLACK (Ref # 92160D) | 92160-3869-6Z | 1 |
| DAMPER,MIRROR,RH,F.BLACK (Ref # 92160E) | 92160-3870-6Z | 1 |
| DAMPER,HANDLE COVER (Ref # 92160F) | 92160-3897 | 1 |
| TUBE (Ref # 92191) | 92191-3867 | 1 |
| WASHER,5.9X16X1.5 (Ref # 92200) | 92200-3714 | 2 |