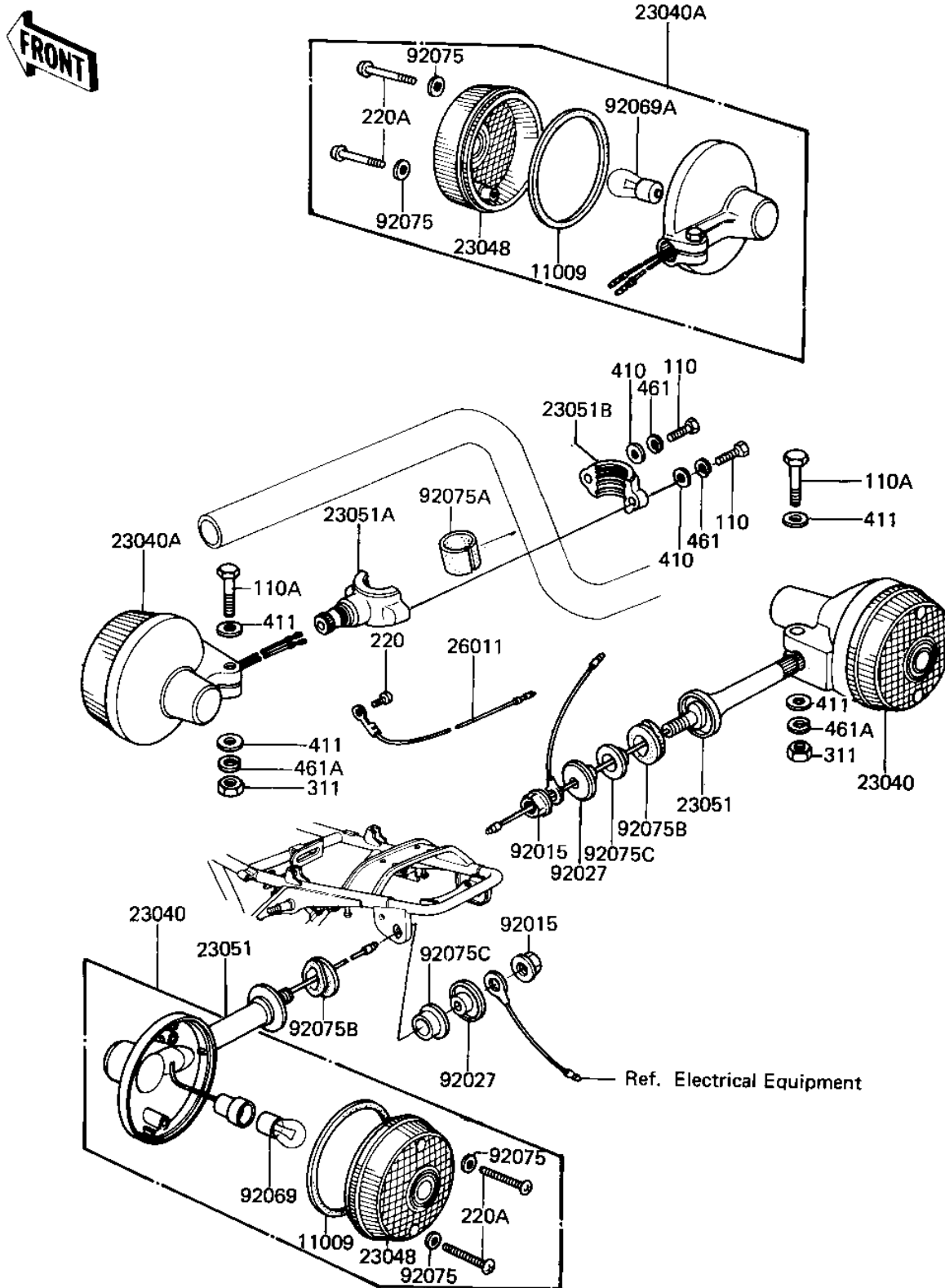


1982 CSR

PARTS DIAGRAM

TURN SIGNALS

F2730-0003



1982 CSR

PARTS LIST

TURN SIGNALS

| ITEM NAME | PART NUMBER | QUANTITY |
|--------------------------------------|-------------|----------|
| GASKET-SIG LAMP LENS (Ref # 11009) | 23050-003 | 4 |
| LAMP,TURN SIGNAL (Ref # 23040) | 23040-054 | 2 |
| LAMP,FRNT,TURN SIGNAL (Ref # 23040A) | 23040-1004 | 2 |
| LENS,TURN SIGNAL LAMP (Ref # 23048) | 23048-1001 | 4 |
| BRACKET,TURN SIGNAL.L (Ref # 23051) | 23051-053 | 2 |
| BRACKET,FRNT TURN SIG (Ref # 23051A) | 23051-1004 | 2 |
| BRACKET,SIGNAL LAMP (Ref # 23051B) | 23051-1013 | 2 |
| WIRE-TURN SIGNAL LEAD (Ref # 26011) | 26011-061 | 2 |
| NUT,FLANGED,10MM (Ref # 92015) | 92015-1428 | 2 |
| COLLAR (Ref # 92027) | 92027-147 | 2 |
| BULB 12V 32CP (Ref # 92069) | 92069-055 | 2 |
| BULB,12V 23/8W (Ref # 92069A) | 92069-060 | 2 |
| WASHER-PLAIN,4MM (Ref # 92075) | 23058-002 | 8 |
| DAMPER RUBBER (Ref # 92075A) | 23066-003 | 2 |
| DAMPER RUBBER (Ref # 92075B) | 92075-128 | 2 |
| DAMPER RUBBER,SIG LM (Ref # 92075C) | 92075-158 | 2 |
| BOLT (Ref # 110) | 110N0516 | 4 |
| BOLT-UPSET (Ref # 110A) | 112G0630 | 4 |
| SCREW PAN HEAD 3X5 (Ref # 220) | 220B0305A | 2 |
| SCREW-PAN HEAD,4X20 (Ref # 220A) | 220E0420A | 8 |
| NUT 6MM (Ref # 311) | 311B0600 | 4 |
| WASHER-PLAIN,5MM (Ref # 410) | 410D0500 | 4 |
| WASHER PLAIN 6MM (Ref # 411) | 411B0600 | 8 |
| WASHER SPRING 5MM (Ref # 461) | 461F0500 | 4 |
| WASHER SPRING 6MM (Ref # 461A) | 461F0600 | 4 |