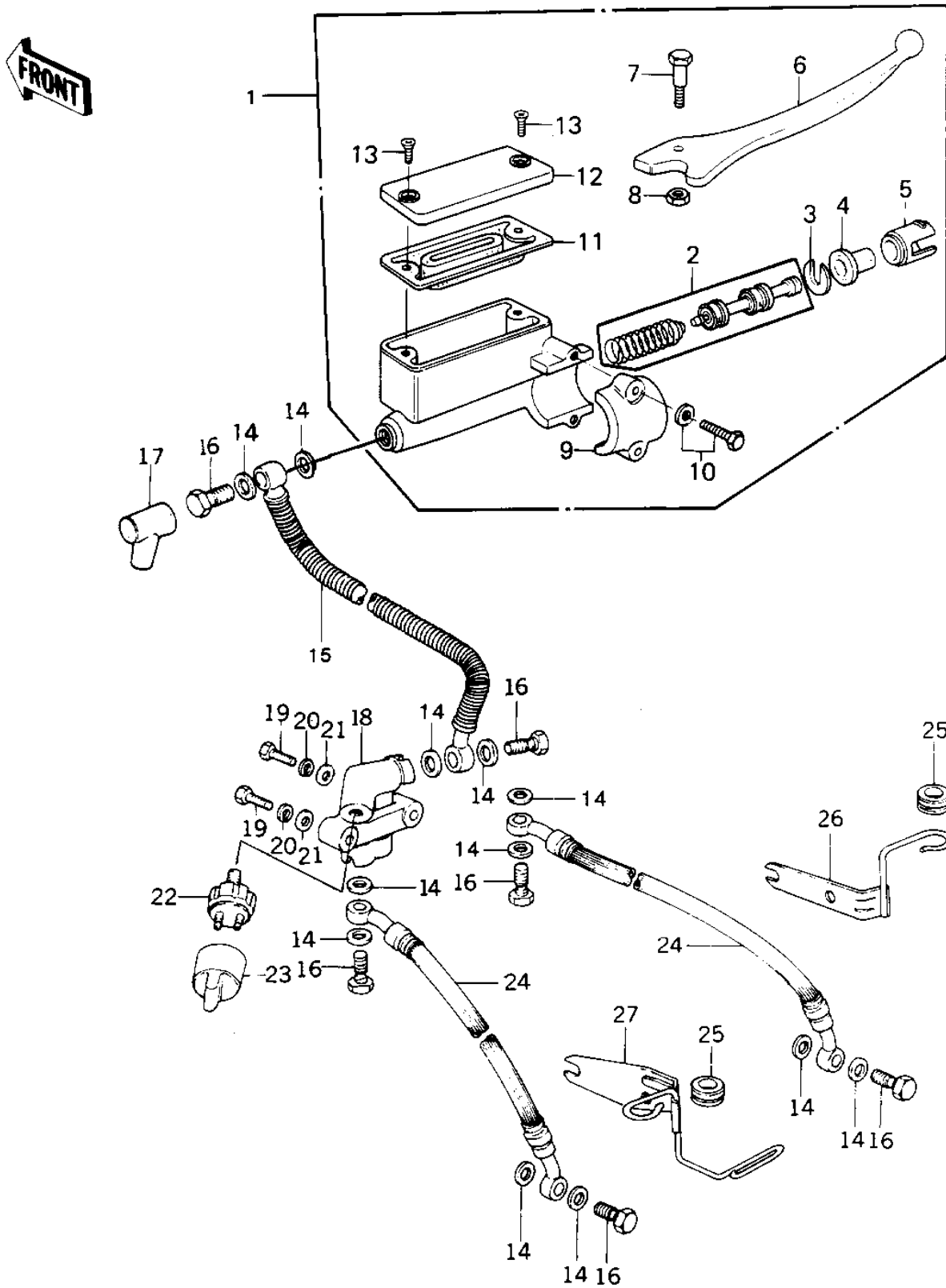


1980 Classic

PARTS DIAGRAM

FRONT MASTER CYLINDER



1980 Classic

PARTS LIST

FRONT MASTER CYLINDER

ITEM NAME	PART NUMBER	QUANTITY
CYLINDER ASSY,MASTER (Ref # 1)	43015-1059	1
PISTON-COMP-BRAKE (Ref # 2)	43020-1023	1
STOPER,PISTON (Ref # 3)	43022-1001	1
DUST COVER (Ref # 4)	49016-1010	1
LINER,PISTON (Ref # 5)	14008-1007	1
LEVER,FRONT BRAKE (Ref # 6)	46092-1012	1
BOLT,CLUTCH LEV FITT (Ref # 7)	92001-1056	1
NUT 6MM (Ref # 8)	312B0600	1
HOLDER,MASTER CYLINDR (Ref # 9)	43034-1001	1
BOLT,HEX HEAD,6X25 (Ref # 10)	43033-003	2
DIAPHRAGM (Ref # 11)	43028-1008	1
CAP,OIL CUP (Ref # 12)	43026-1006	1
SCREW,COUNTERSUNK HED (Ref # 13)	92001-1055	2
WASHER-OIL BOLT (Ref # 14)	43067-001	12
HOSE,MASTER CYL BRAKE (Ref # 15)	43059-1062	1
BOLT,OIL,L=23 (Ref # 16)	92002-1888	6
BOOT,DUST (Ref # 17)	49006-1041	1
JOINT,FOUR WAY (Ref # 18)	43075-002	1
BOLT,FLANGED,6X65 (Ref # 19)	130G0665	2
WASHER SPRING 6MM (Ref # 20)	461F0600	2
WASHER PLAIN 6MM (Ref # 21)	411B0600	2
SWITCH-FRONT BRAKE (Ref # 22)	43065-001	1
CAP,FRONT BRK SWITCH (Ref # 23)	11012-1037	1
HOSE,CALIPER BRAKE (Ref # 24)	43059-033	2
DAMPER RUBBER,CYL HSE (Ref # 25)	43064-006	2
BRACKET,BRAKE HOSE (Ref # 26)	43063-008	1
BRACKET (Ref # 27)	11034-1041	1